

Rothamsted Repository Download

A - Papers appearing in refereed journals

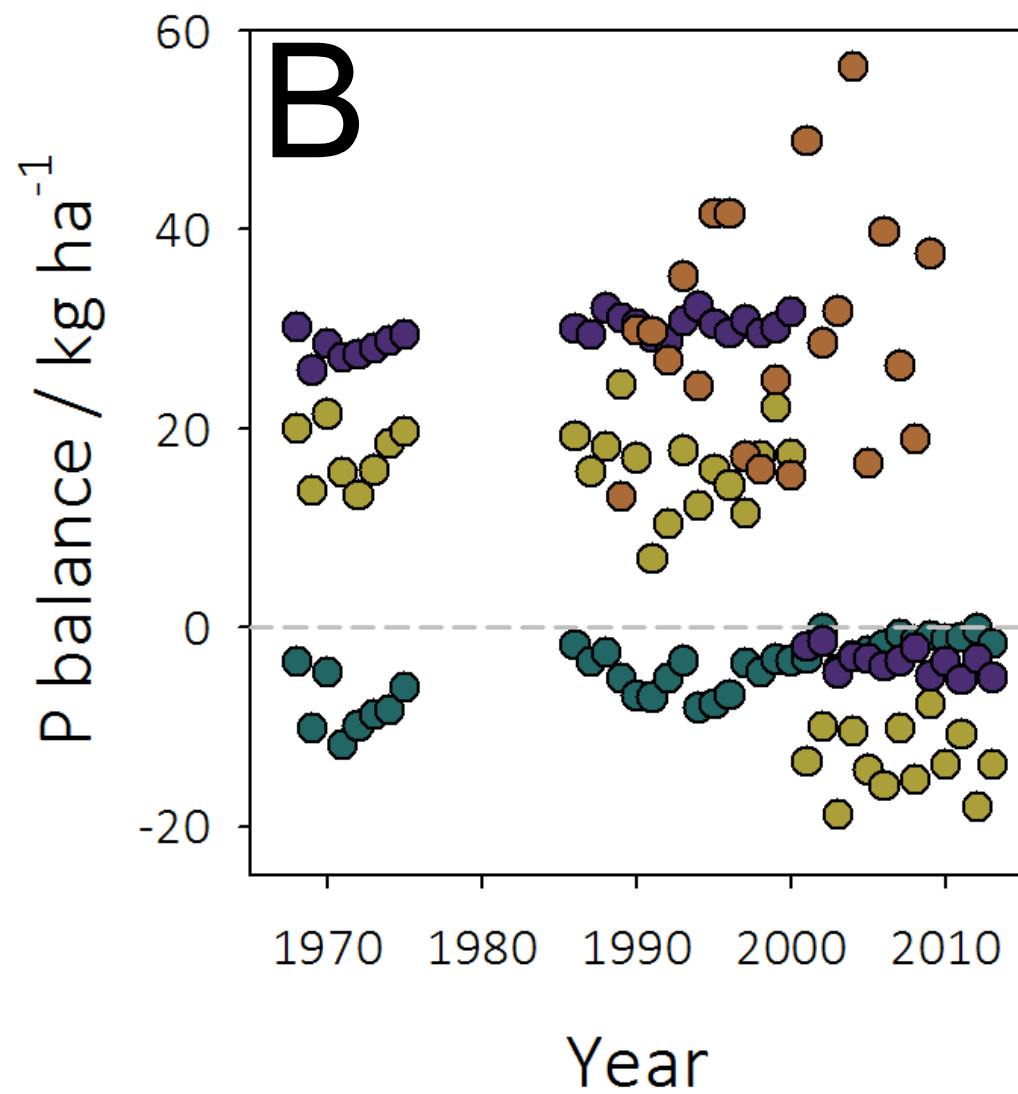
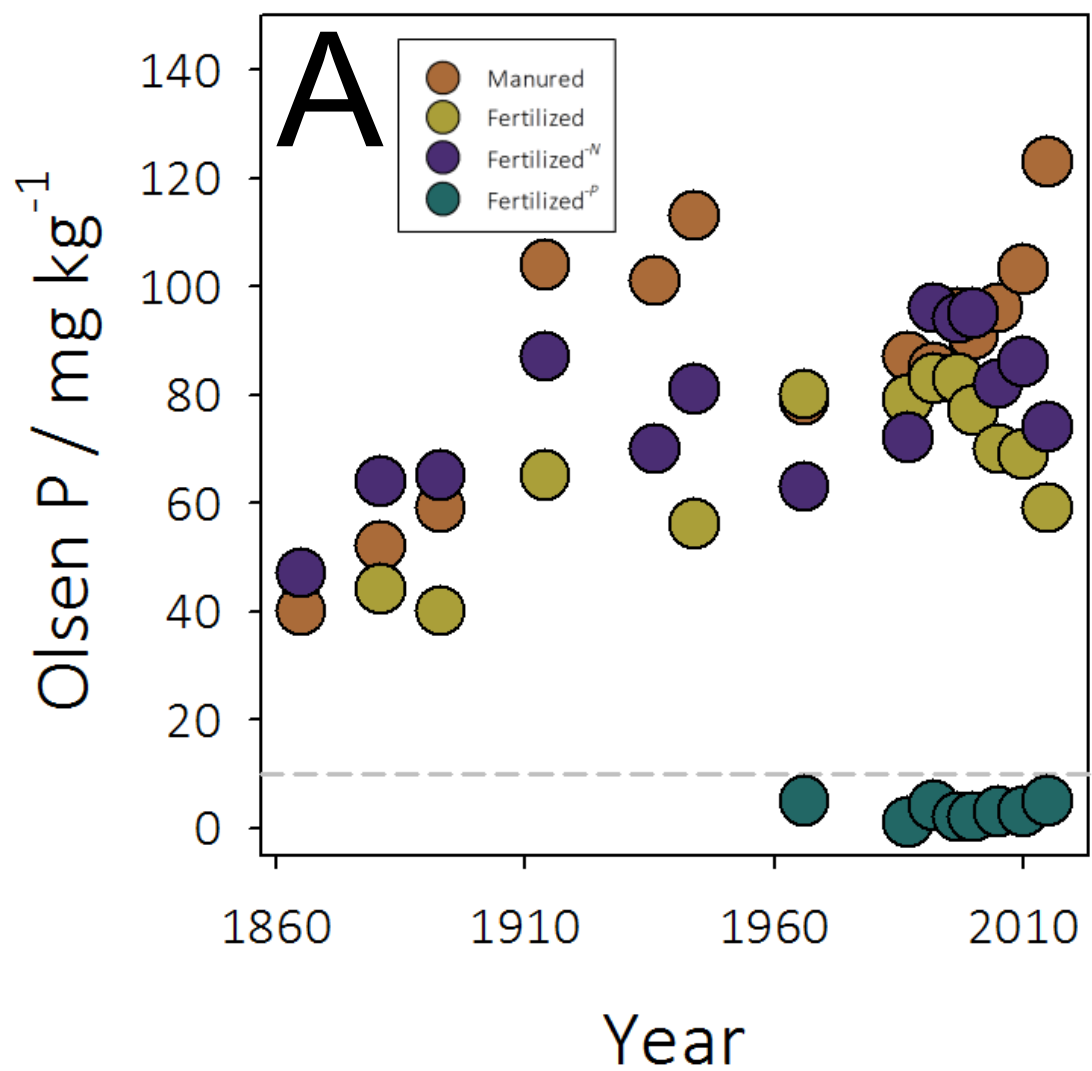
Neal, A. L. and Glendining, M. L. 2019. Calcium Exerts a Strong Influence upon Phosphohydrolase Gene Abundance and Phylogenetic Diversity in Soil. *Soil Biology and Biochemistry*. 139 (December), p. 107613.

The publisher's version can be accessed at:

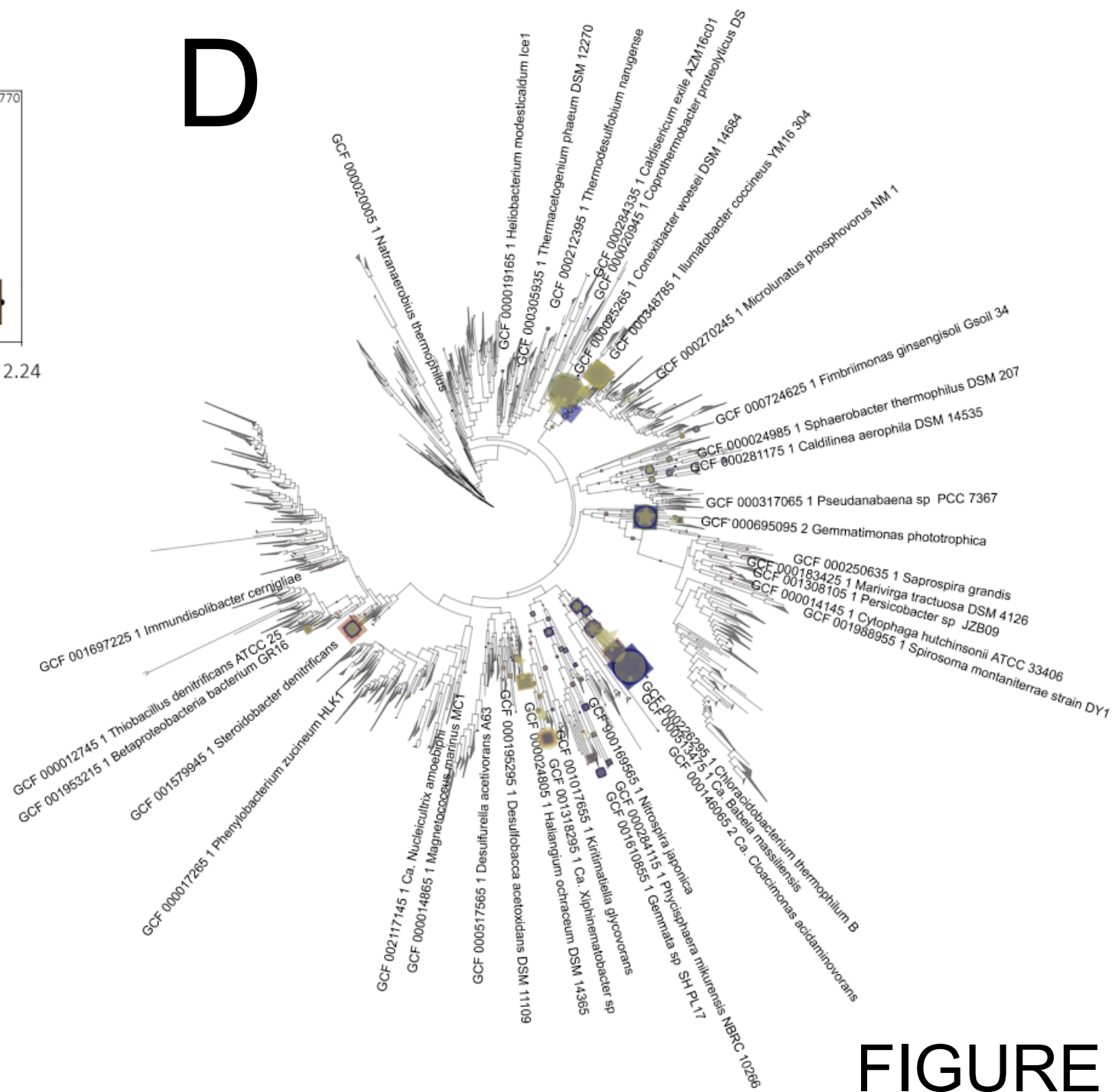
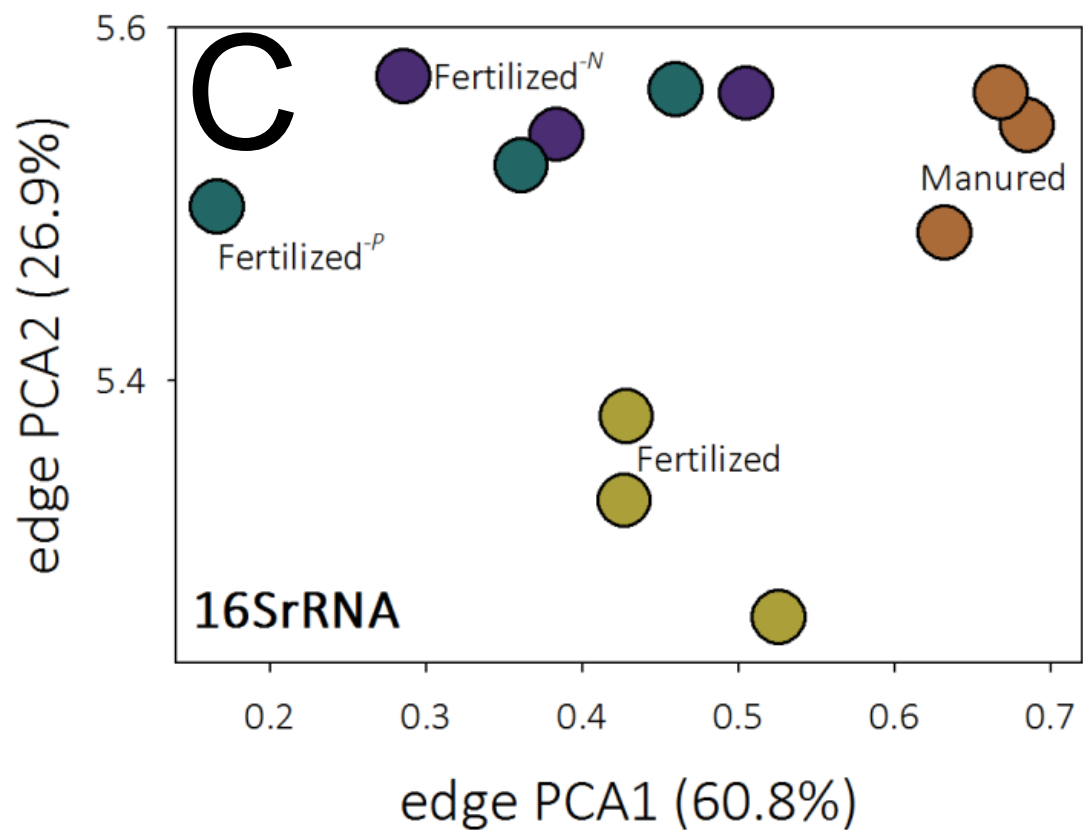
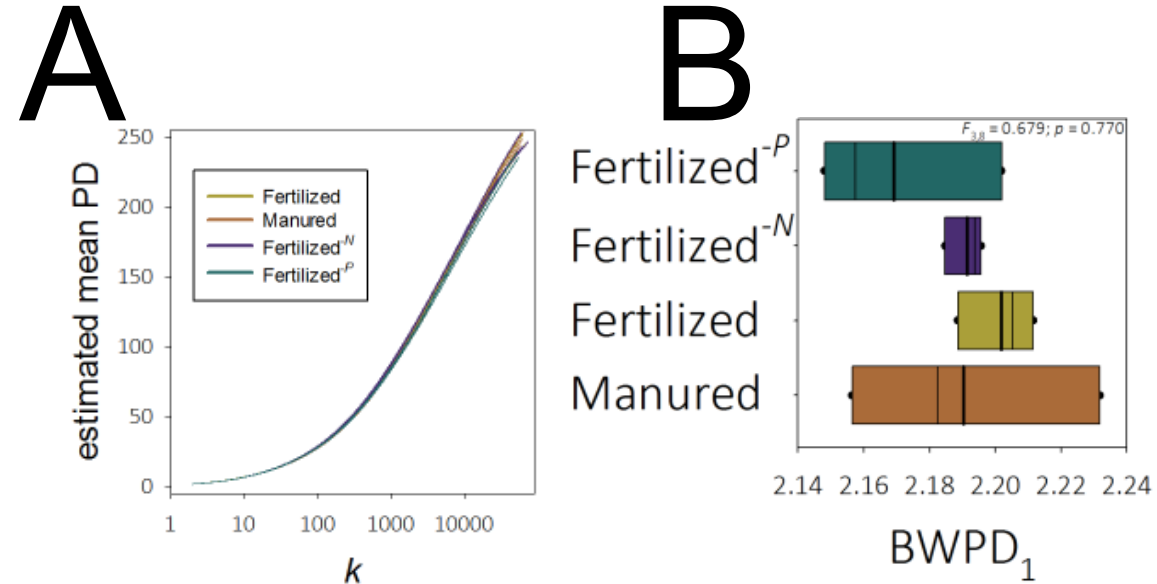
- <https://dx.doi.org/10.1016/j.soilbio.2019.107613>
- <http://doi.org/10.1016/j.soilbio.2019.107613>

The output can be accessed at: <https://repository.rothamsted.ac.uk/item/84v40/calcium-exerts-a-strong-influence-upon-phosphohydrolase-gene-abundance-and-phylogenetic-diversity-in-soil>.

© 2019. This manuscript version is made available under the CC-BY-NC-ND 4.0 license <http://creativecommons.org/licenses/by-nc-nd/4.0/>

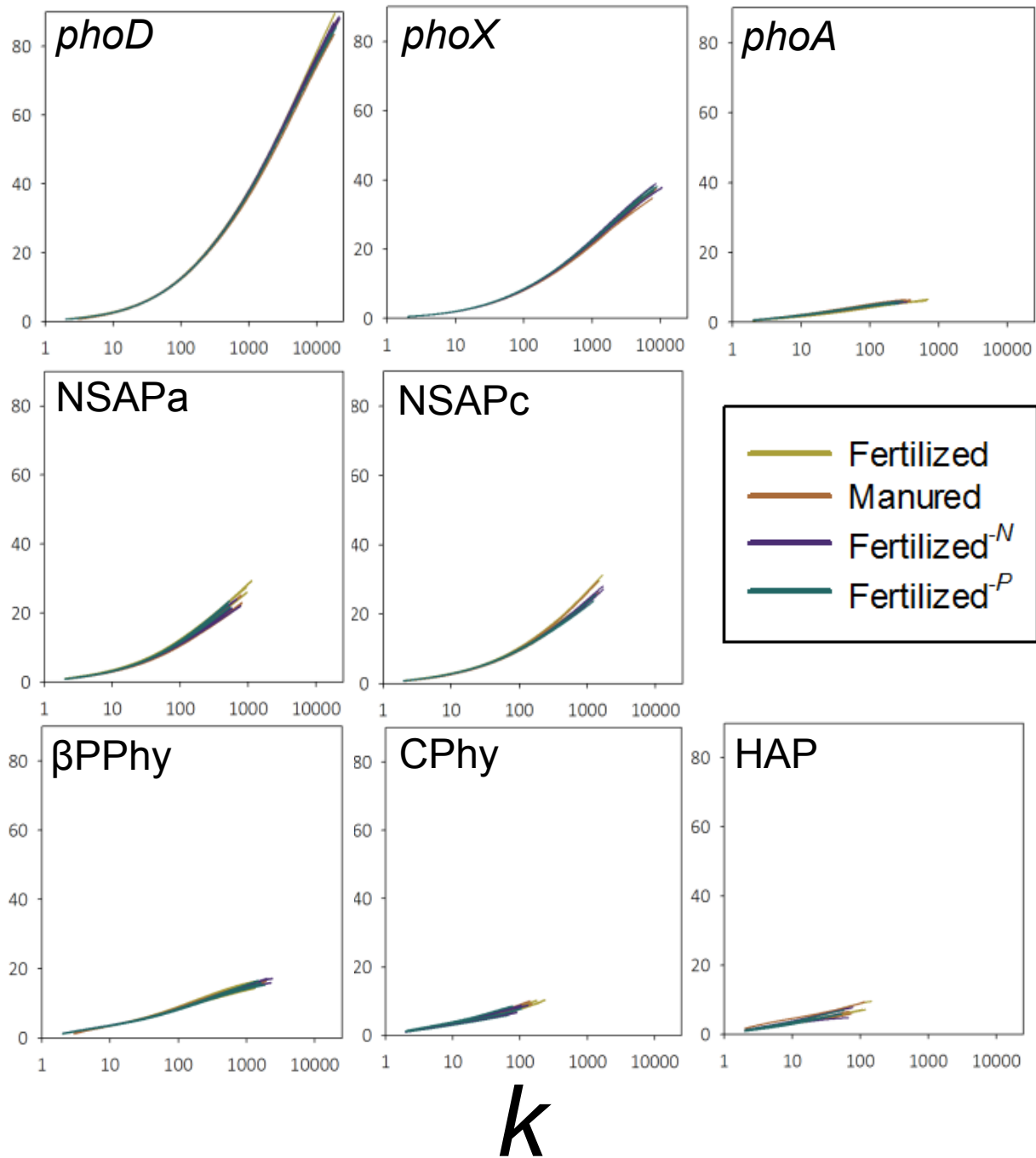


FIGURE



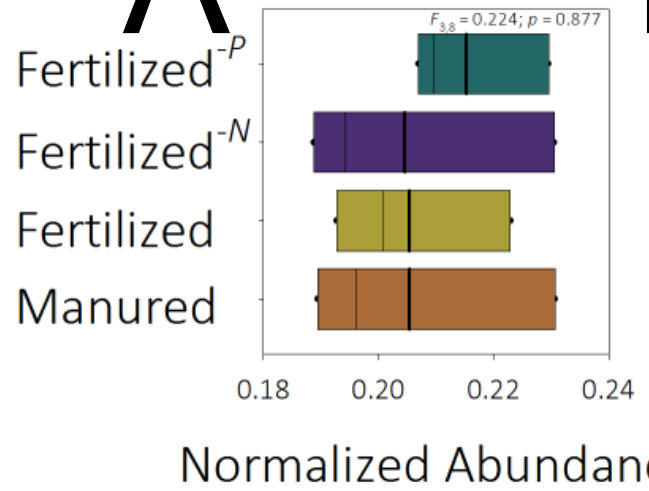
FIGURE

Estimated Mean PD

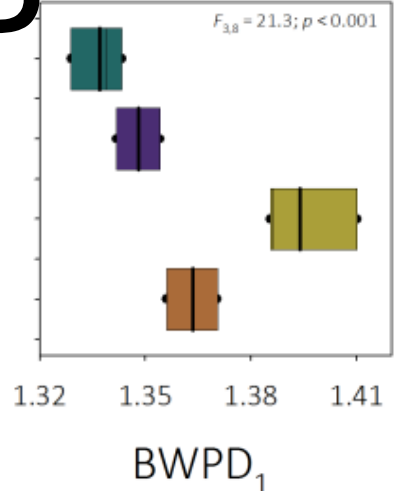


FIGURE

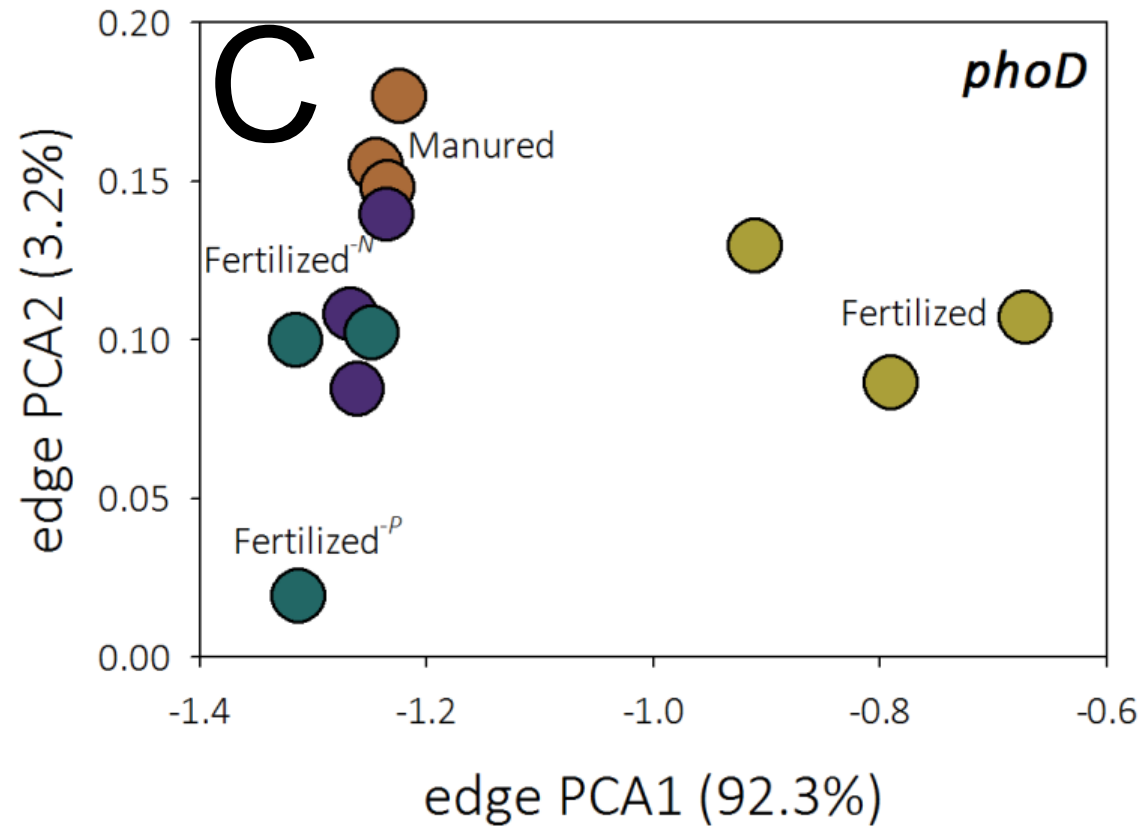
A



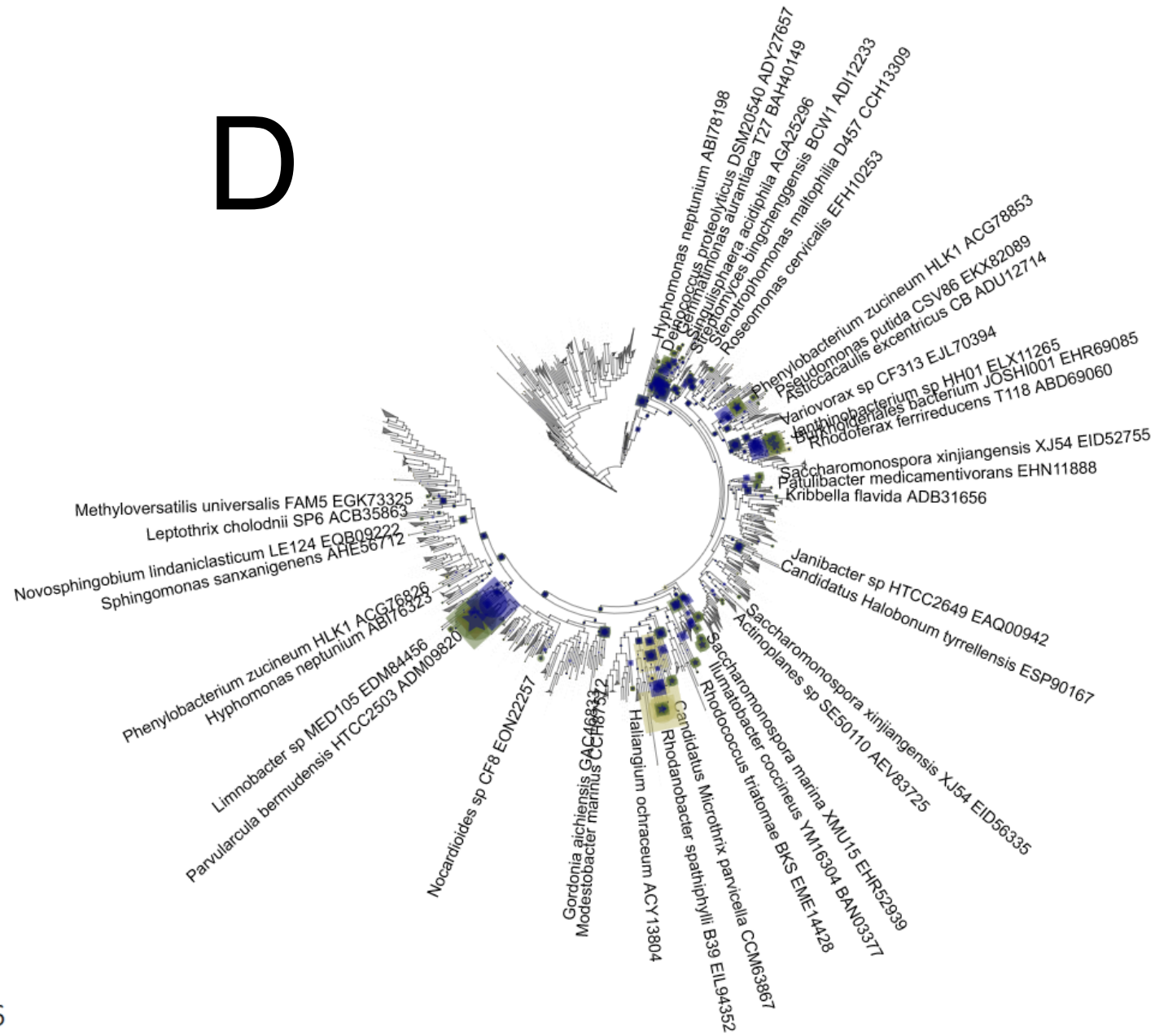
B



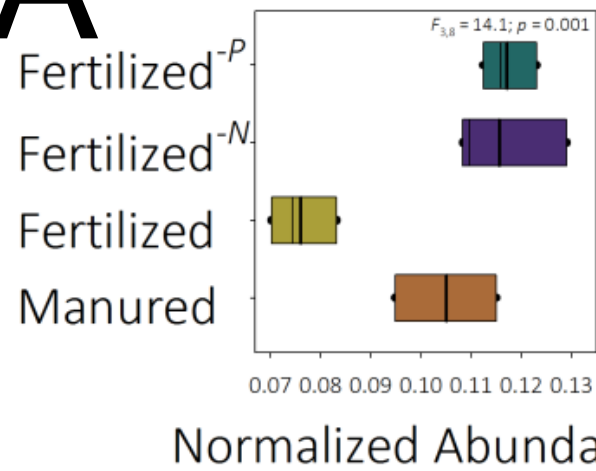
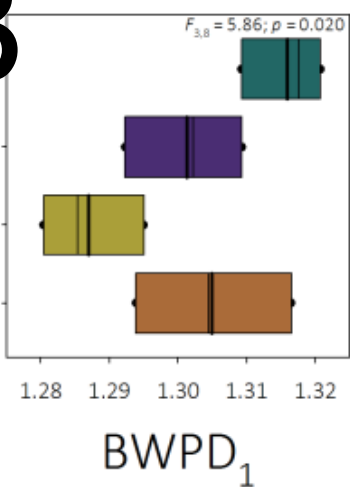
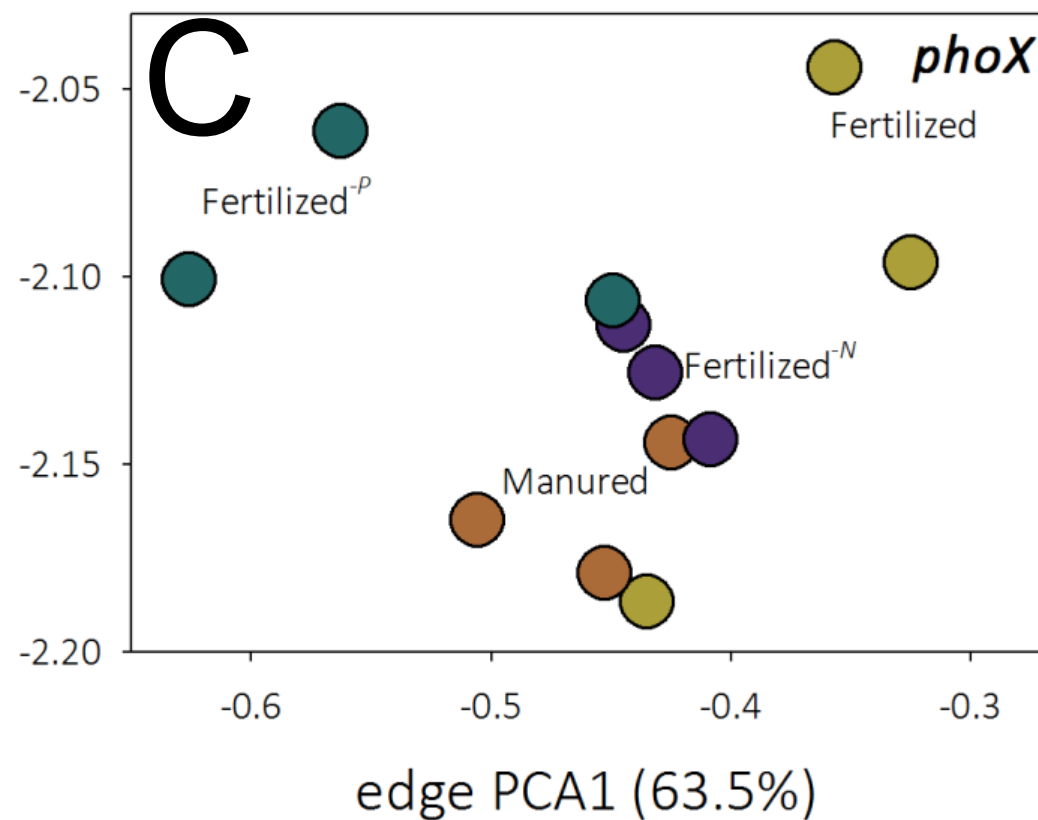
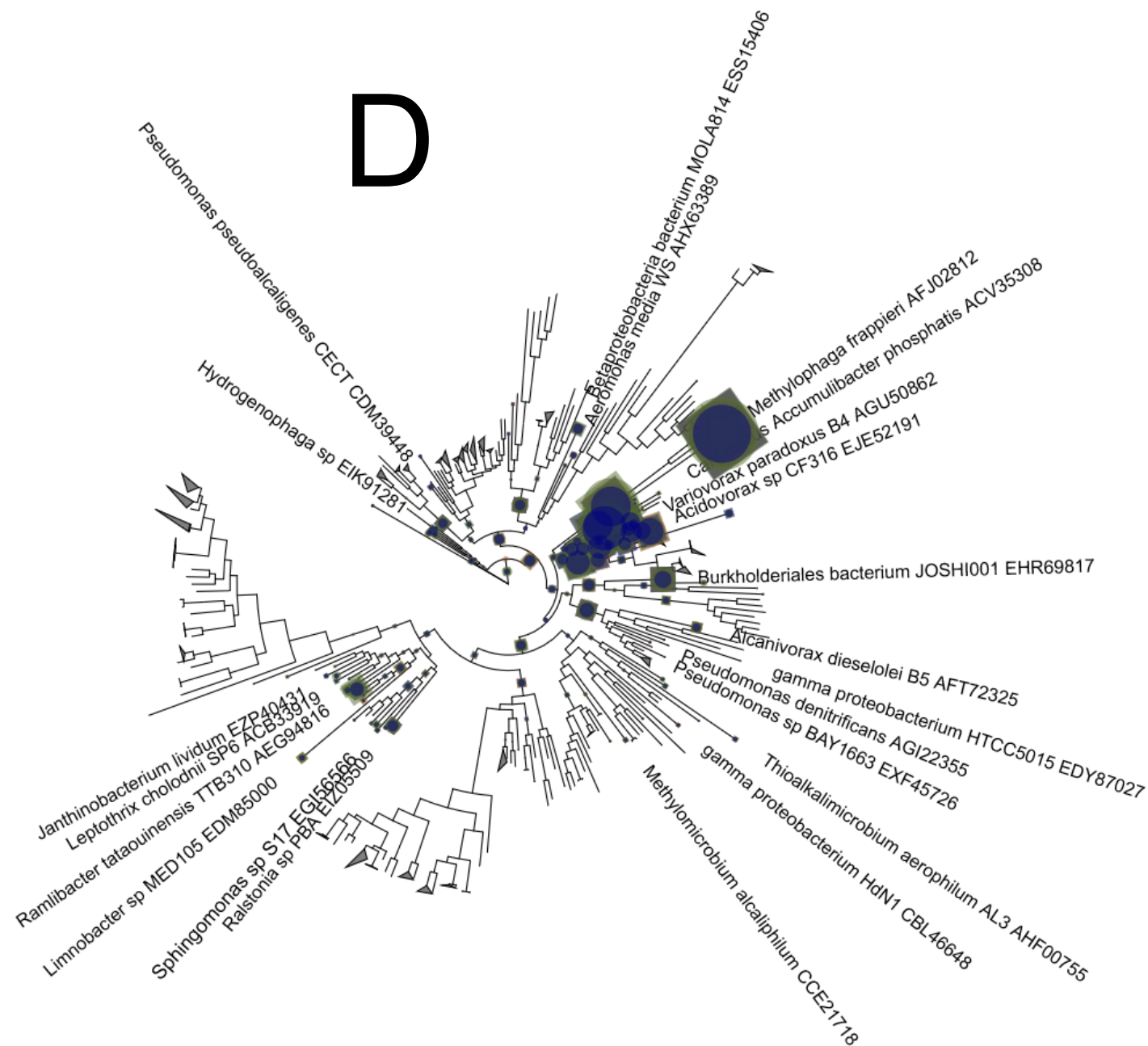
C

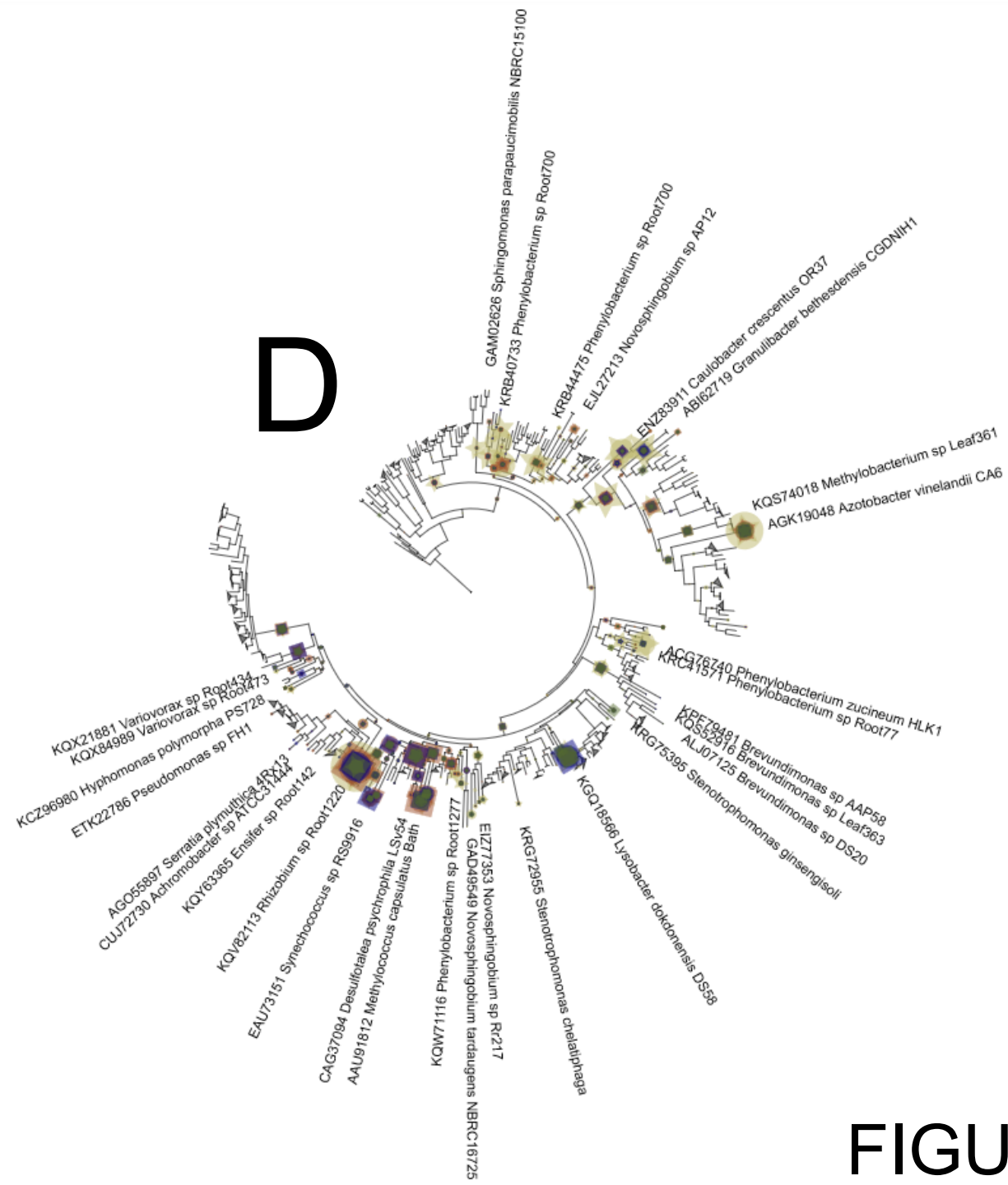
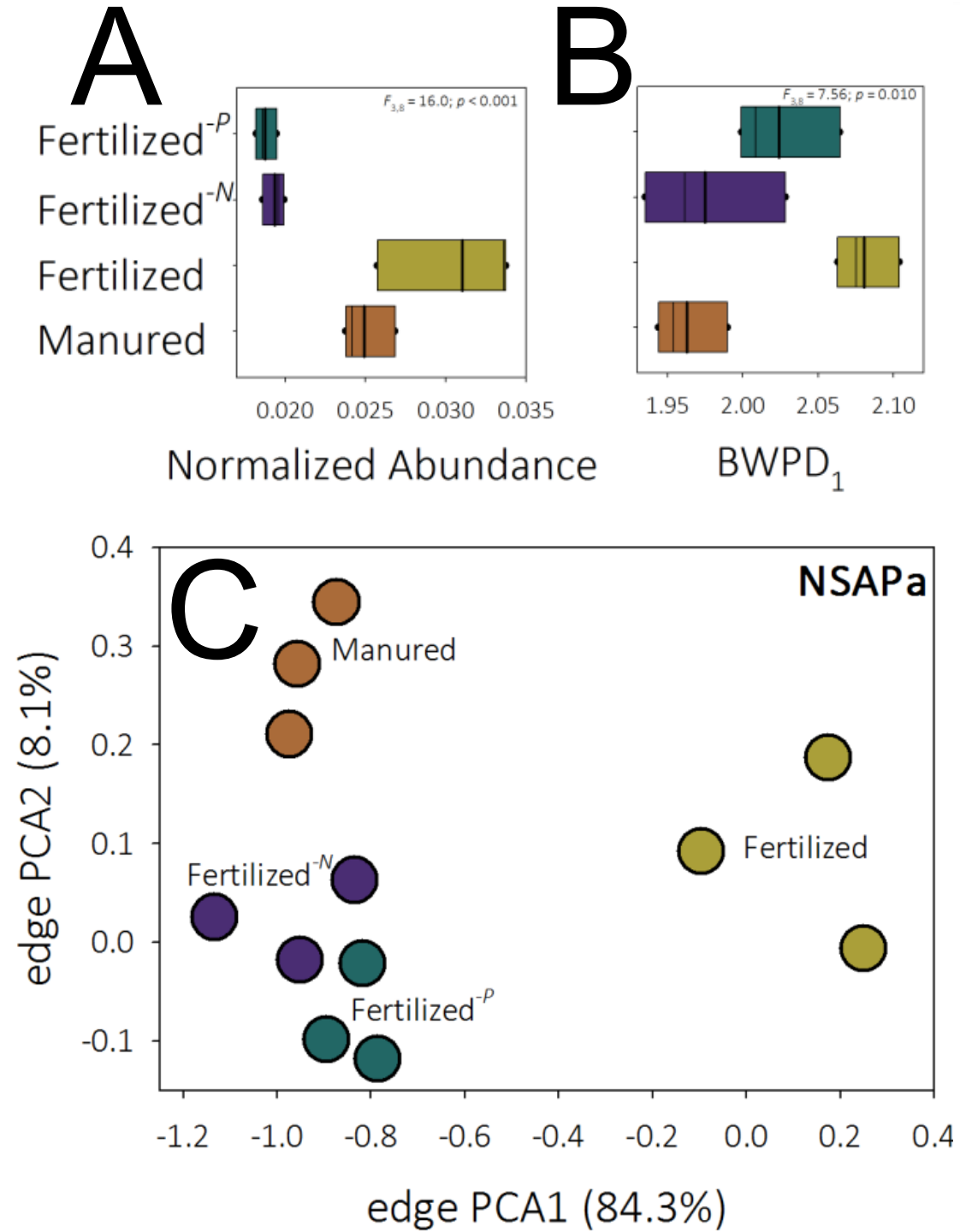


D

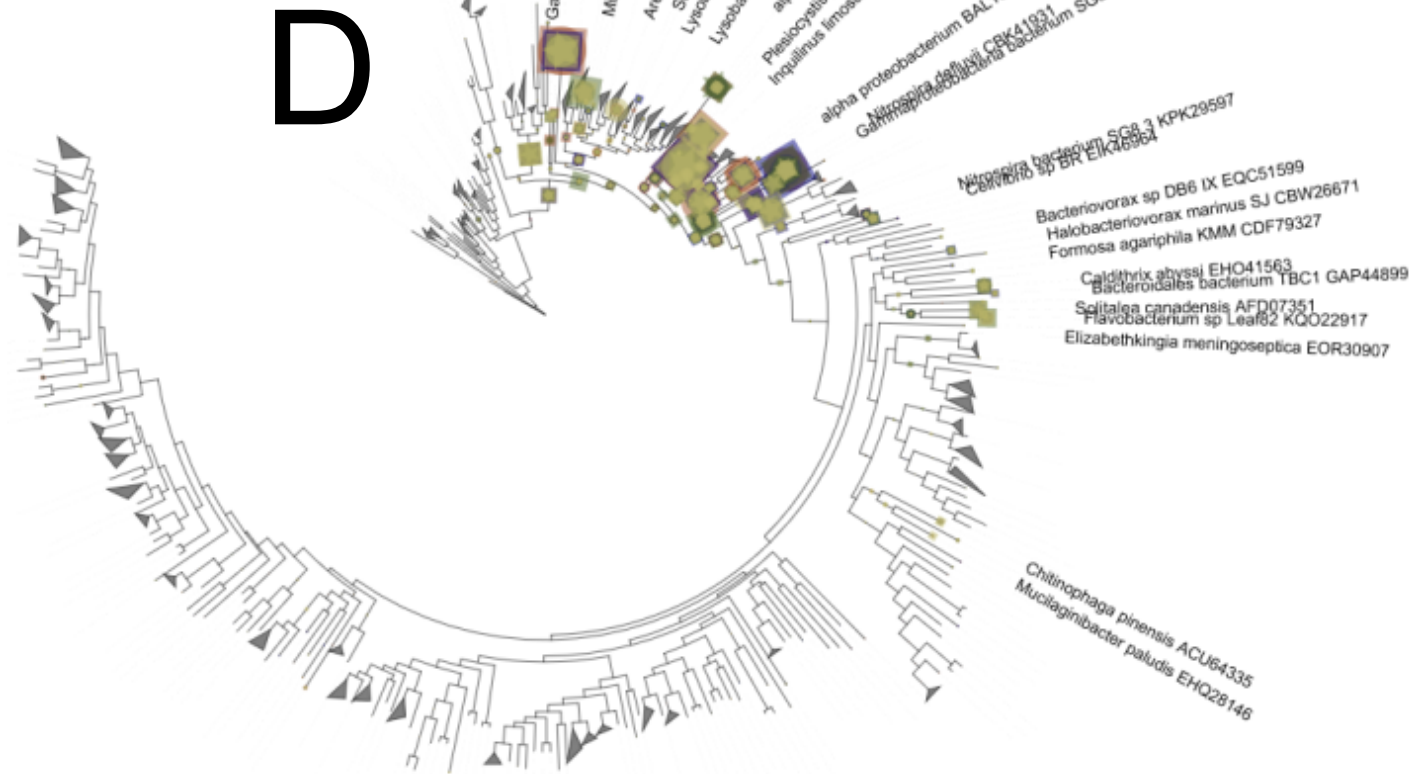
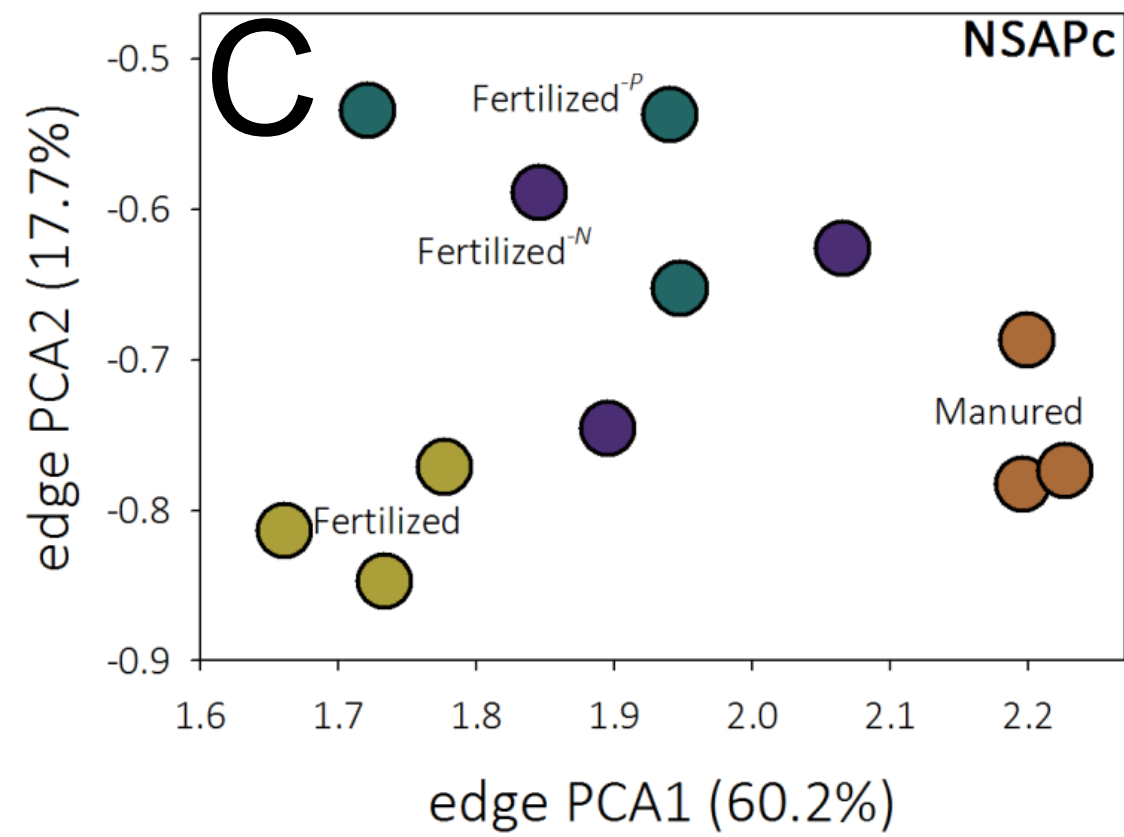
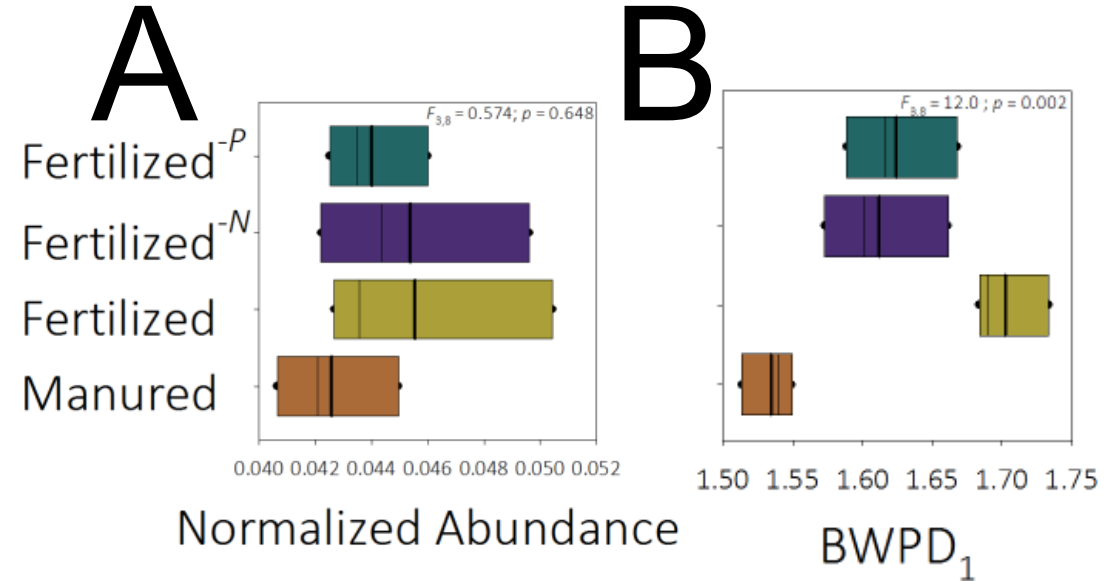


FIGURE

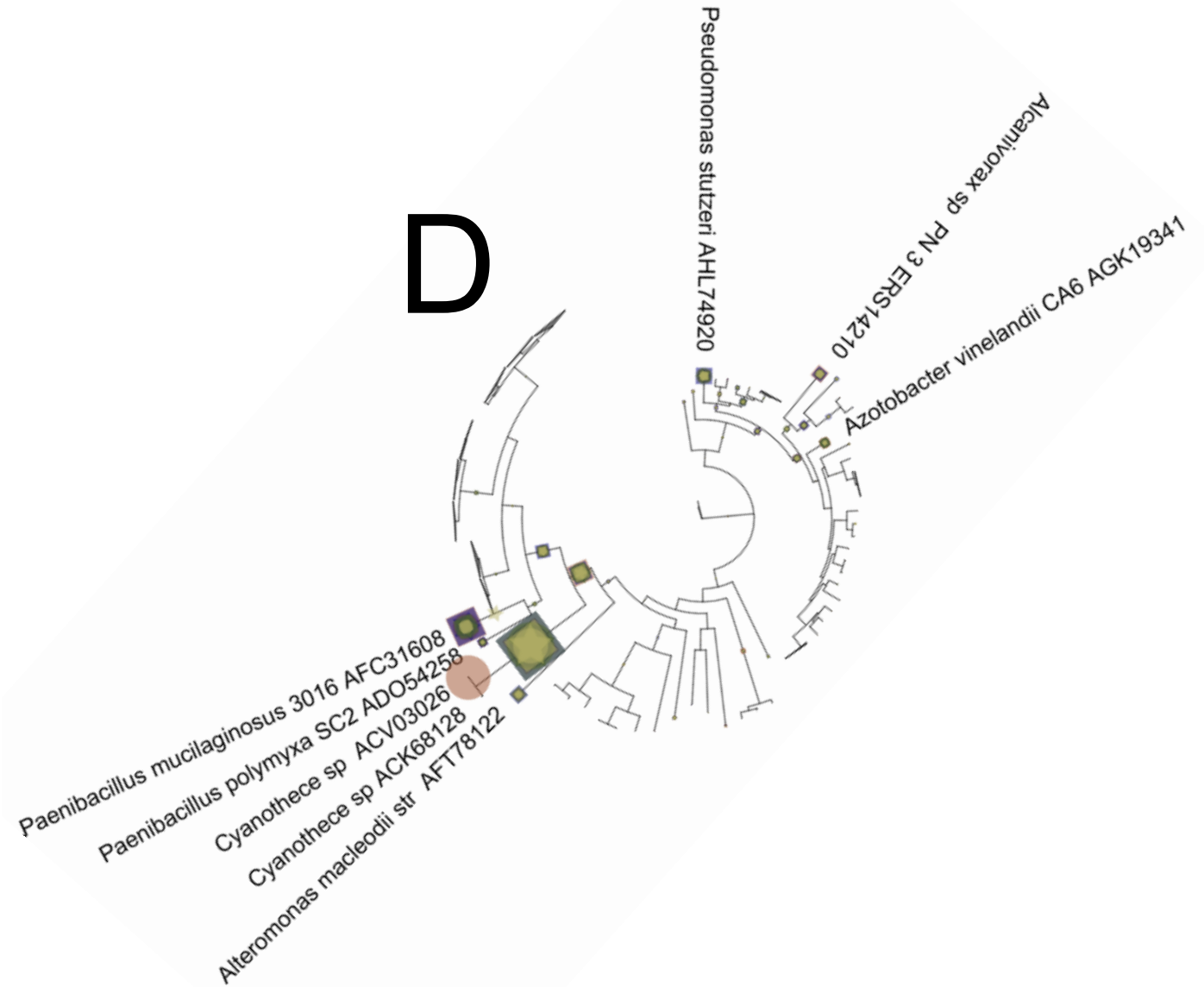
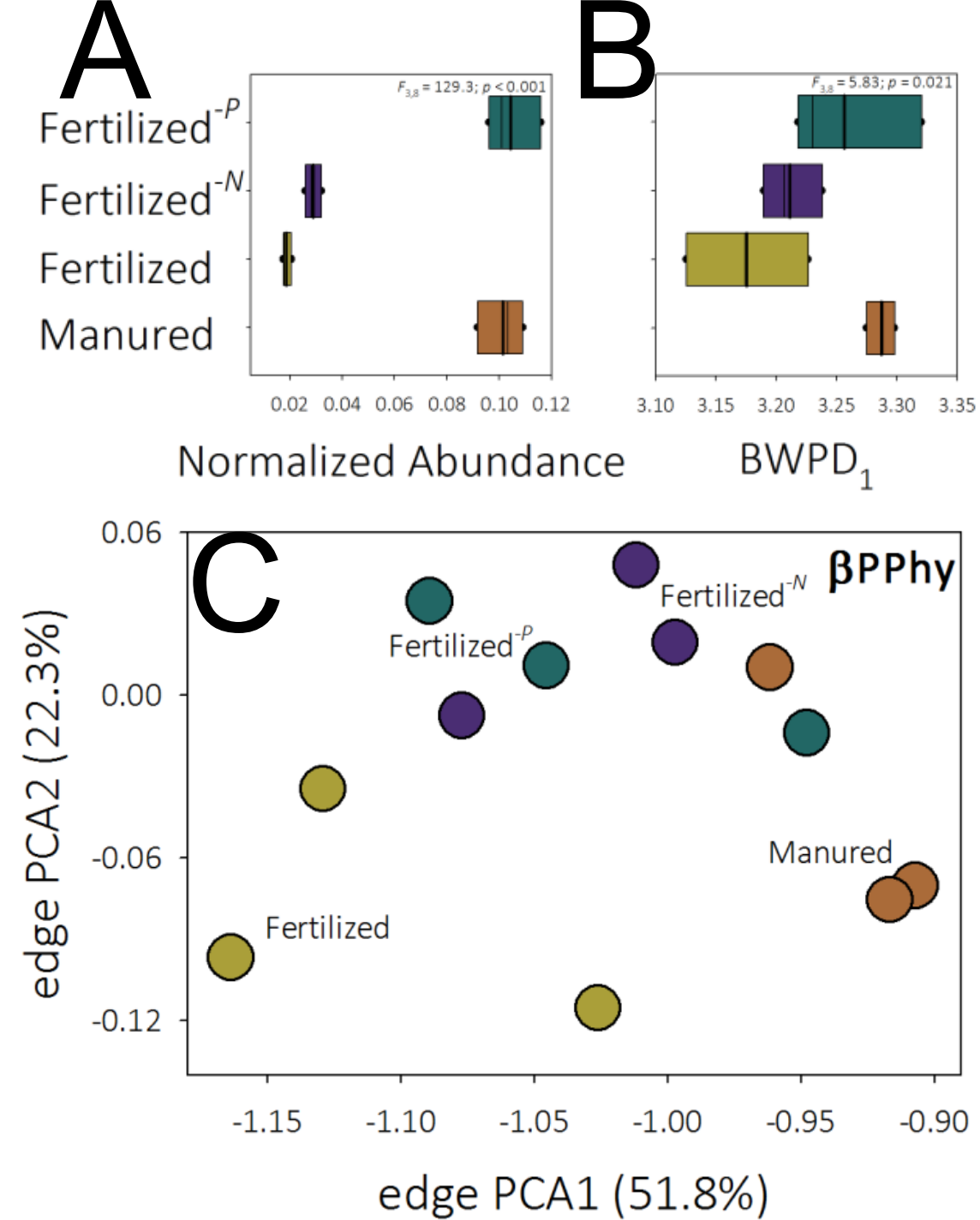
A**B****C****D****FIGURE**



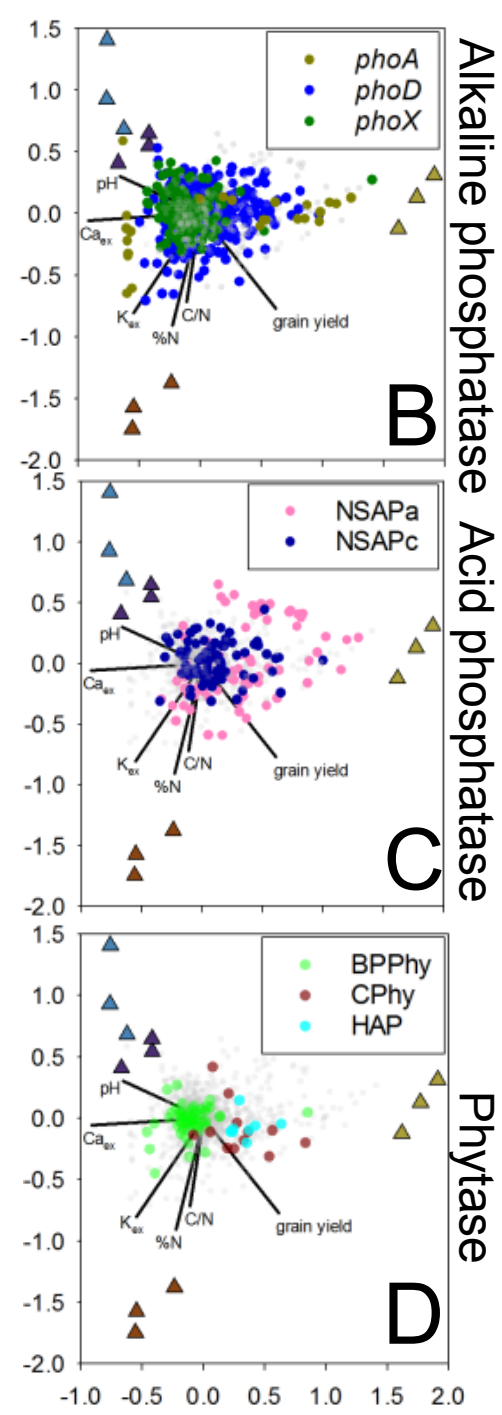
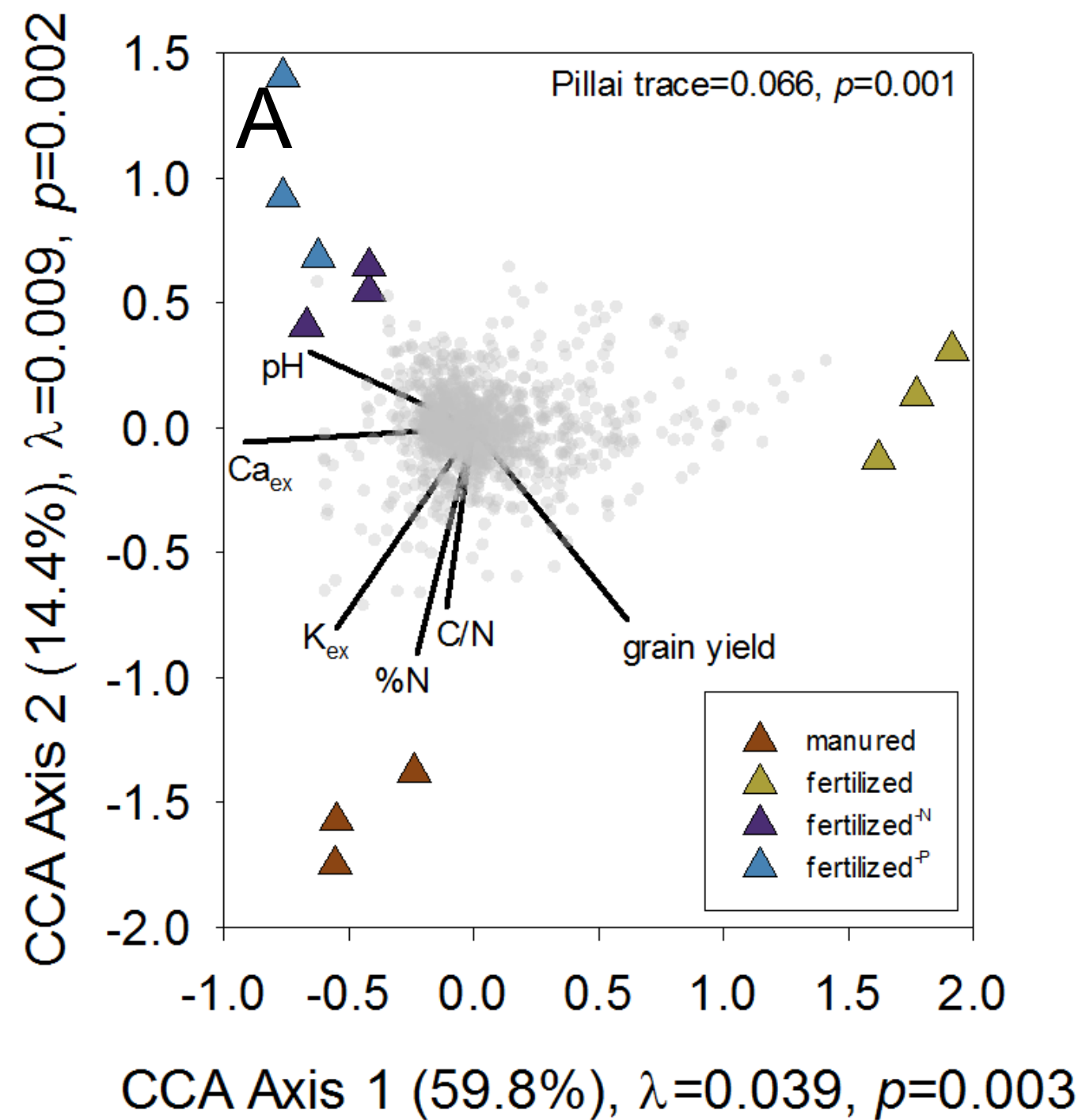
FIGURE



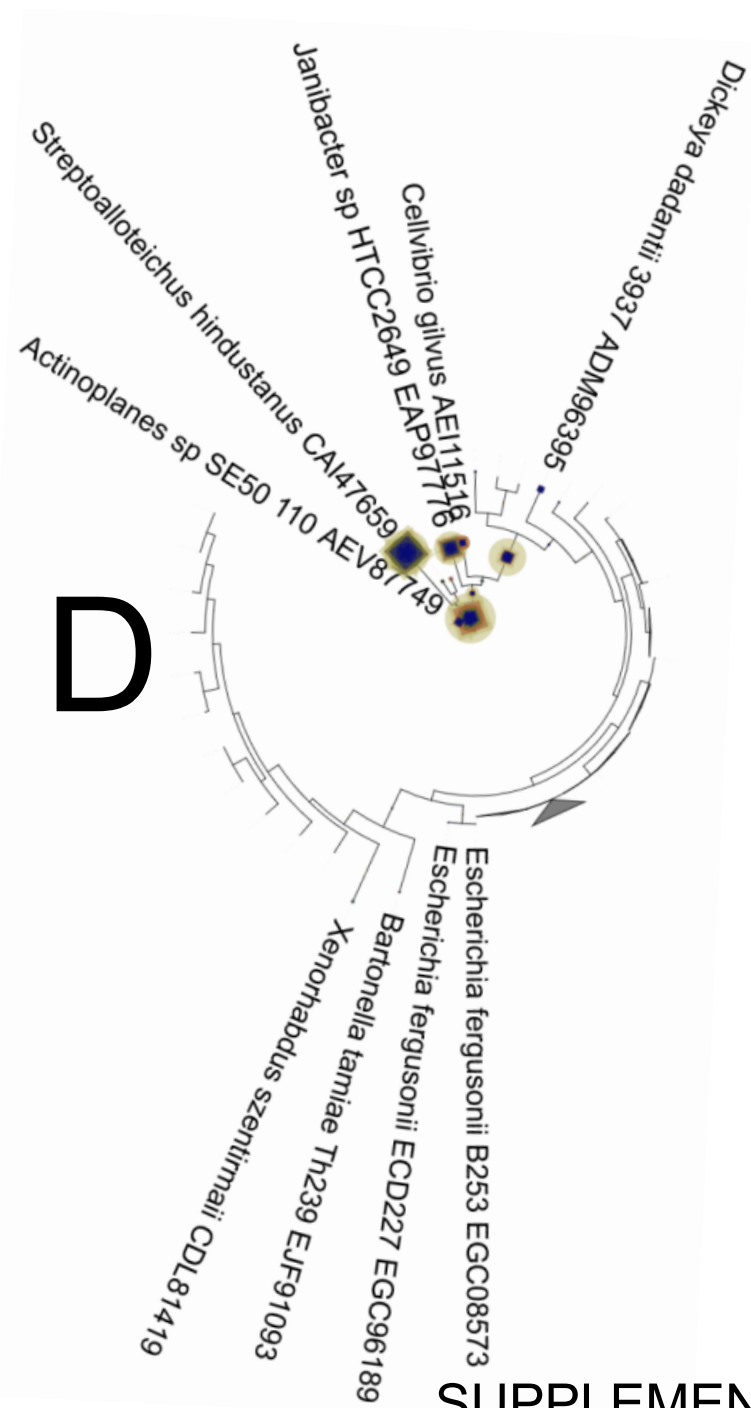
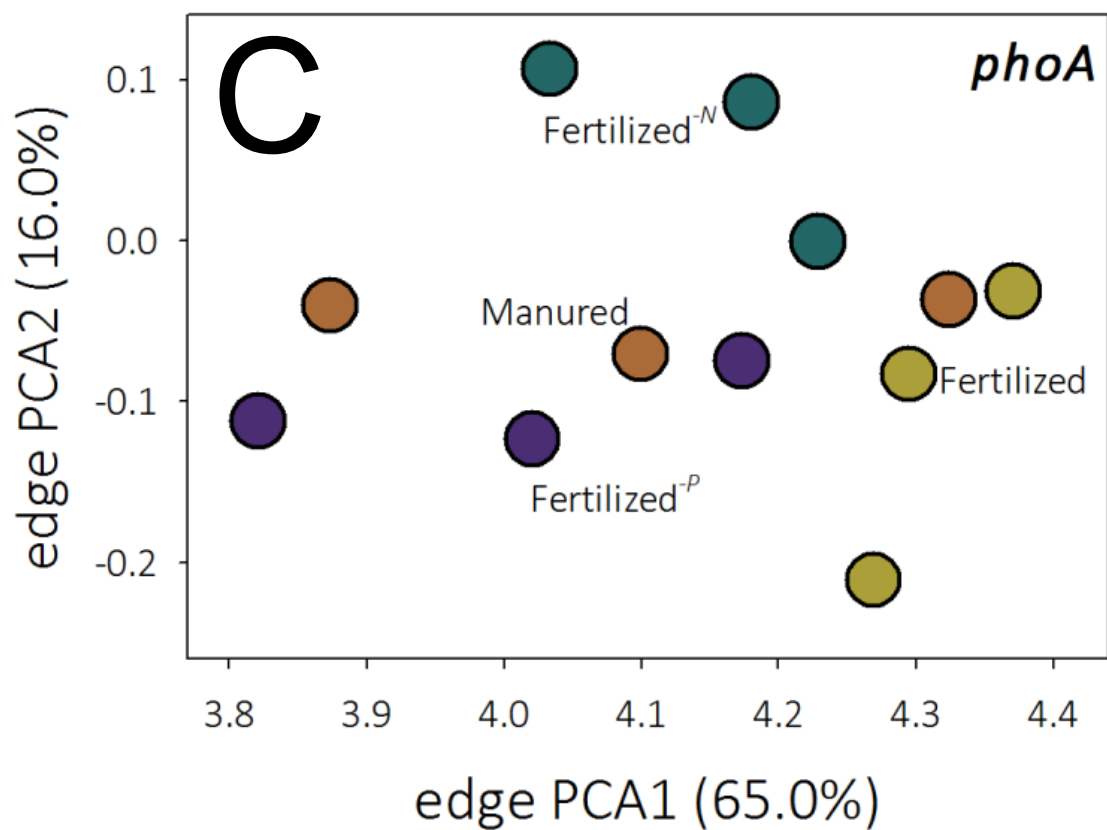
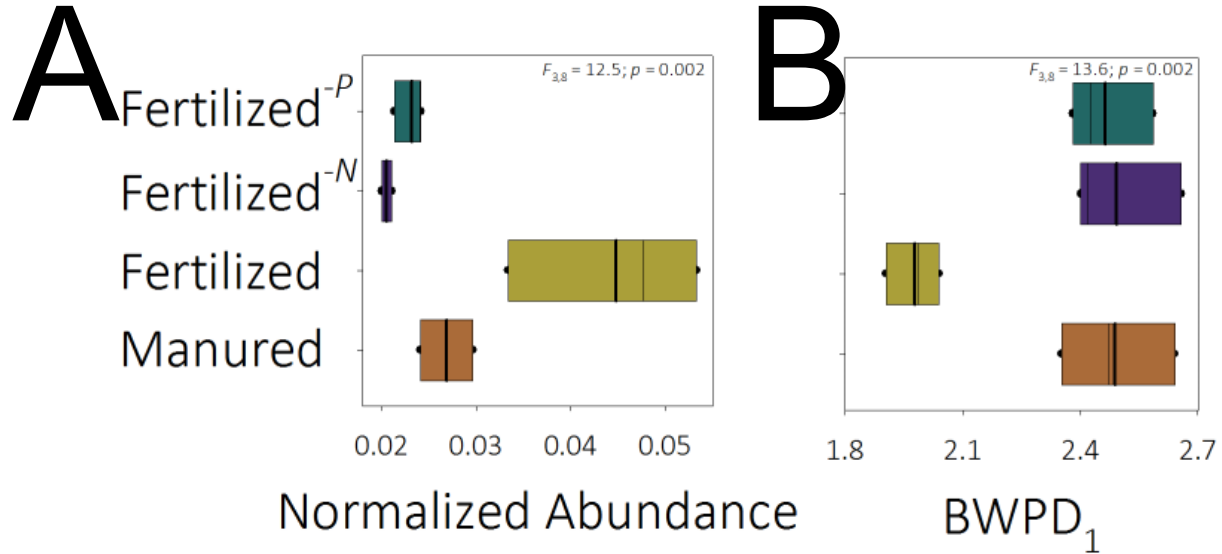
FIGURE

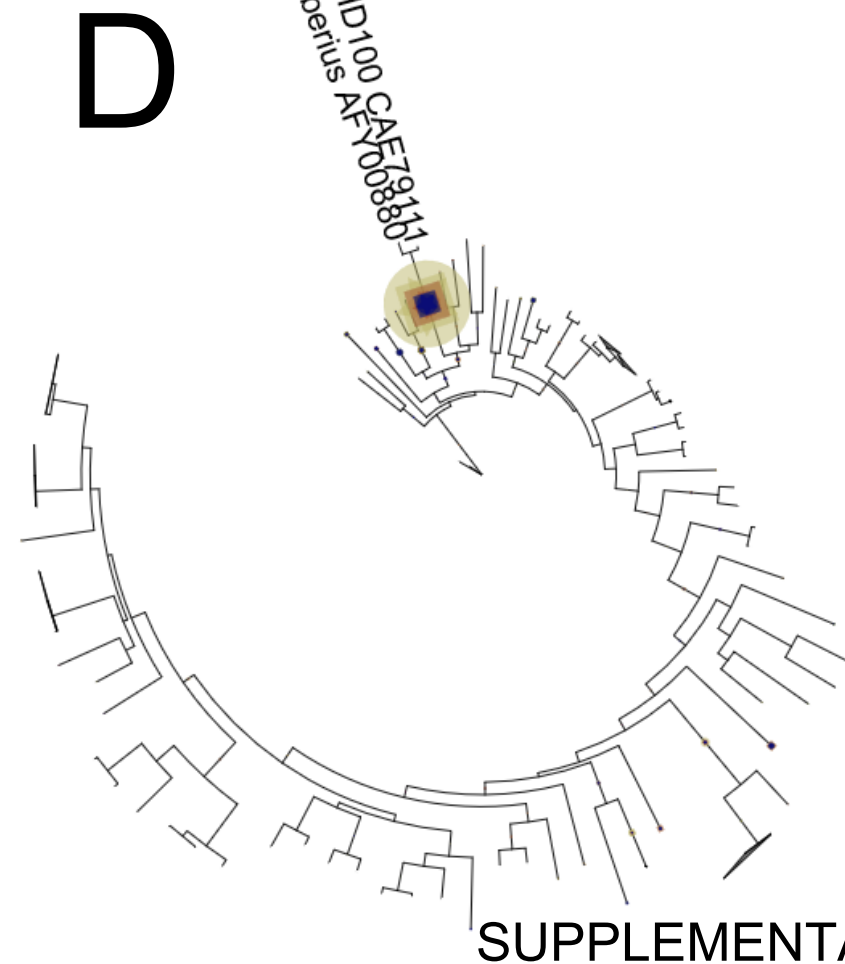
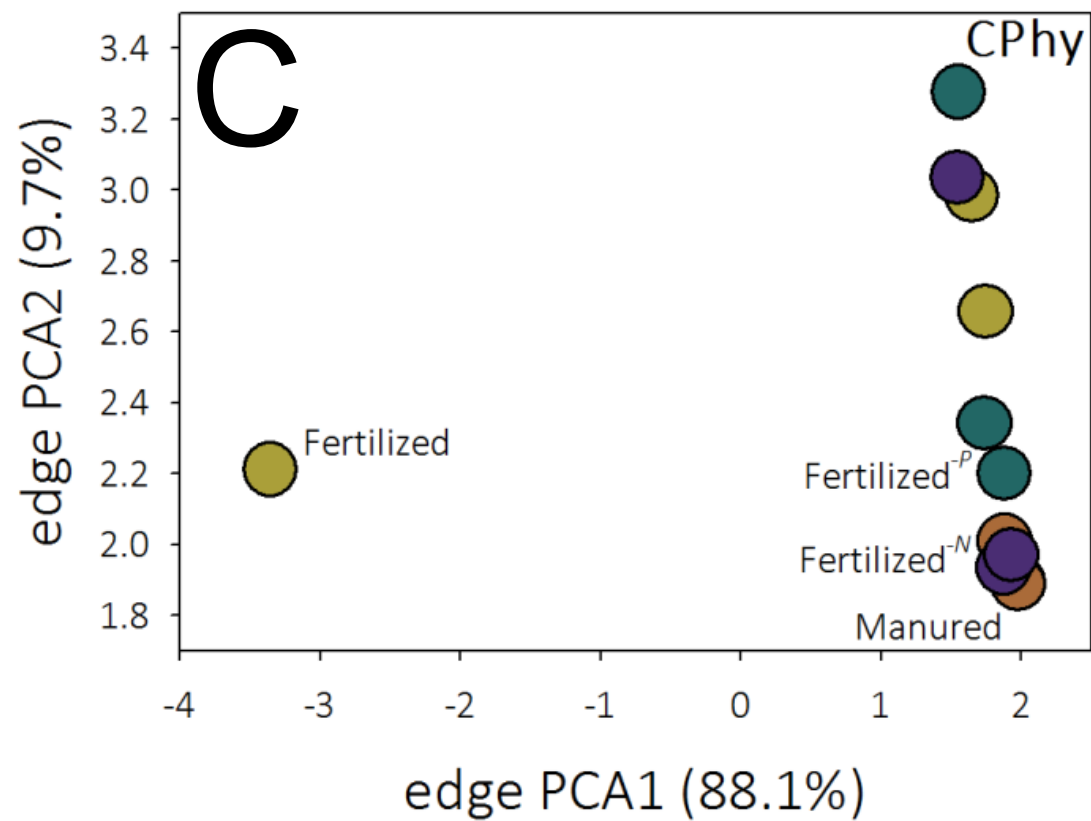
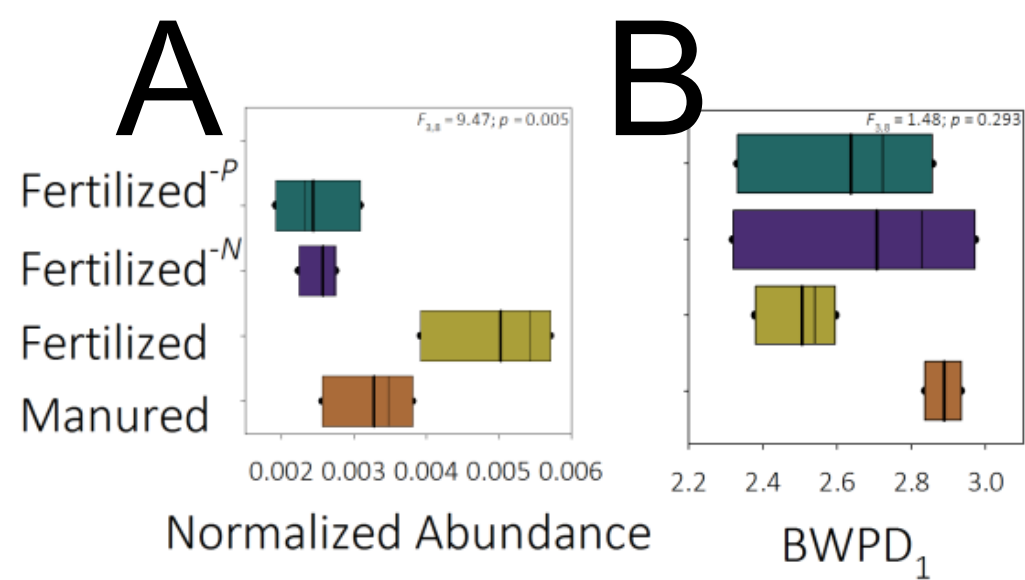


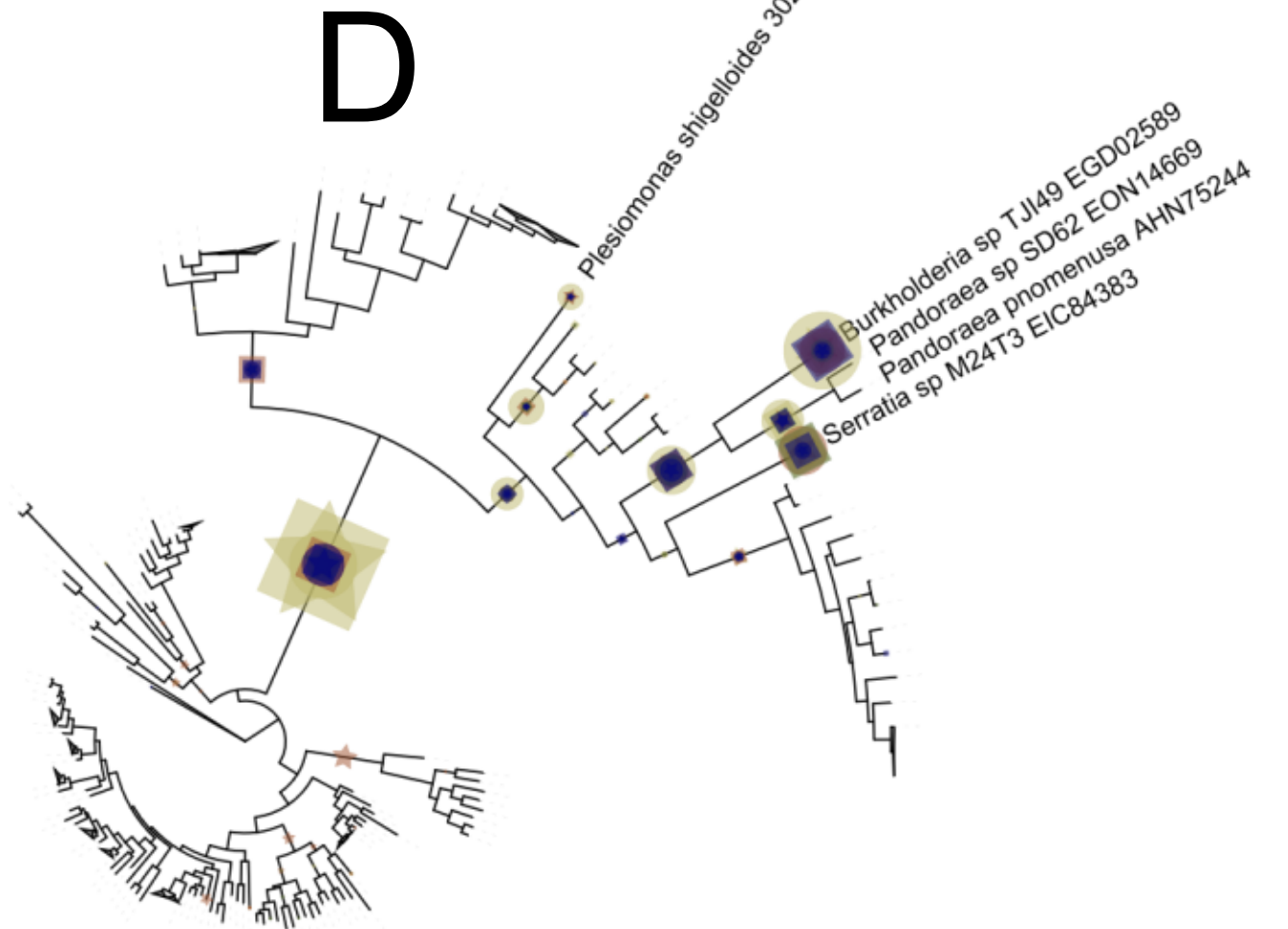
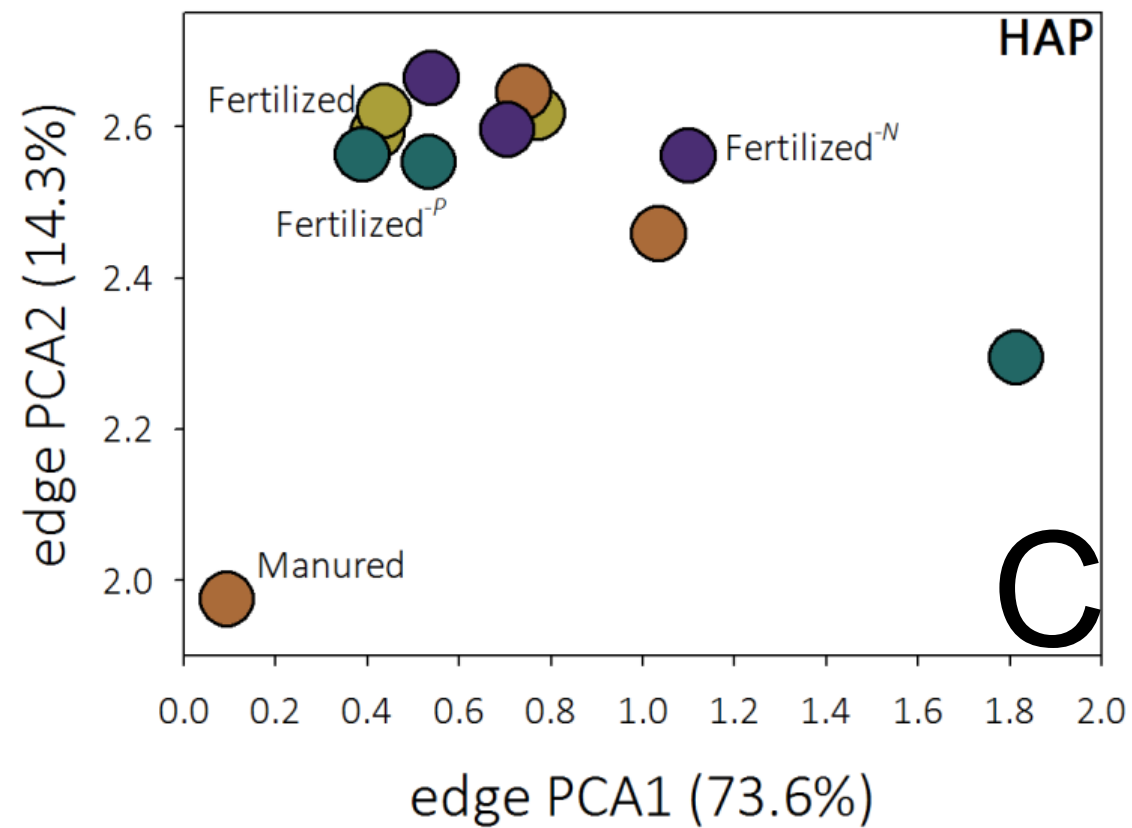
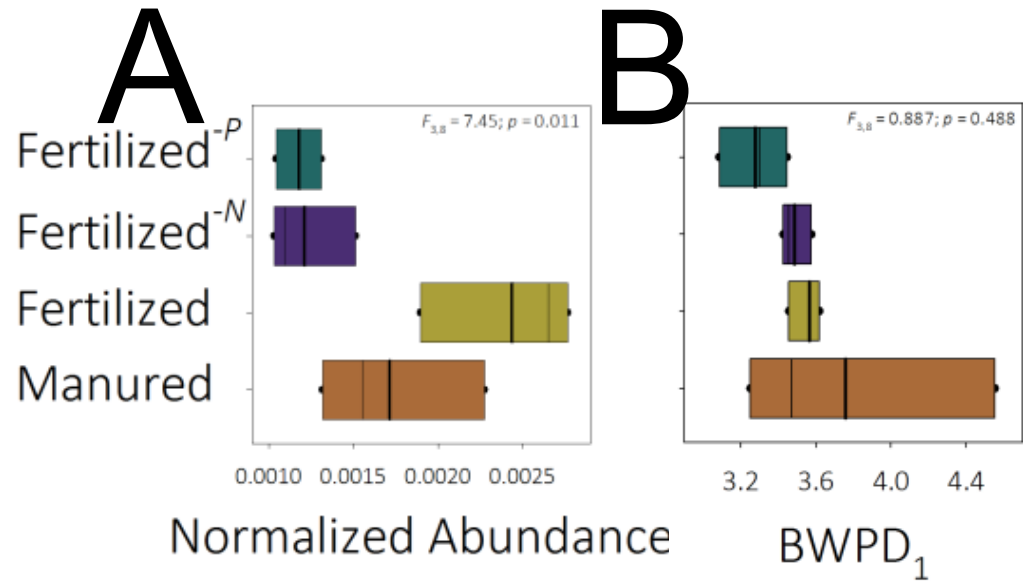
FIGURE



FIGURE







SUPPLEMENTARY FIGURE