

Rothamsted Repository Download

A - Papers appearing in refereed journals

Morales-Hojas, R., Jingxuan, S., Alvira-Iraizoz, F., Tan, X. and Julian Chen 2020. Contrasting population structure and demographic history of cereal aphids in different environmental and agricultural landscapes.
bioRxiv.

The publisher's version can be accessed at:

- <https://dx.doi.org/10.1101/2020.01.16.909077>

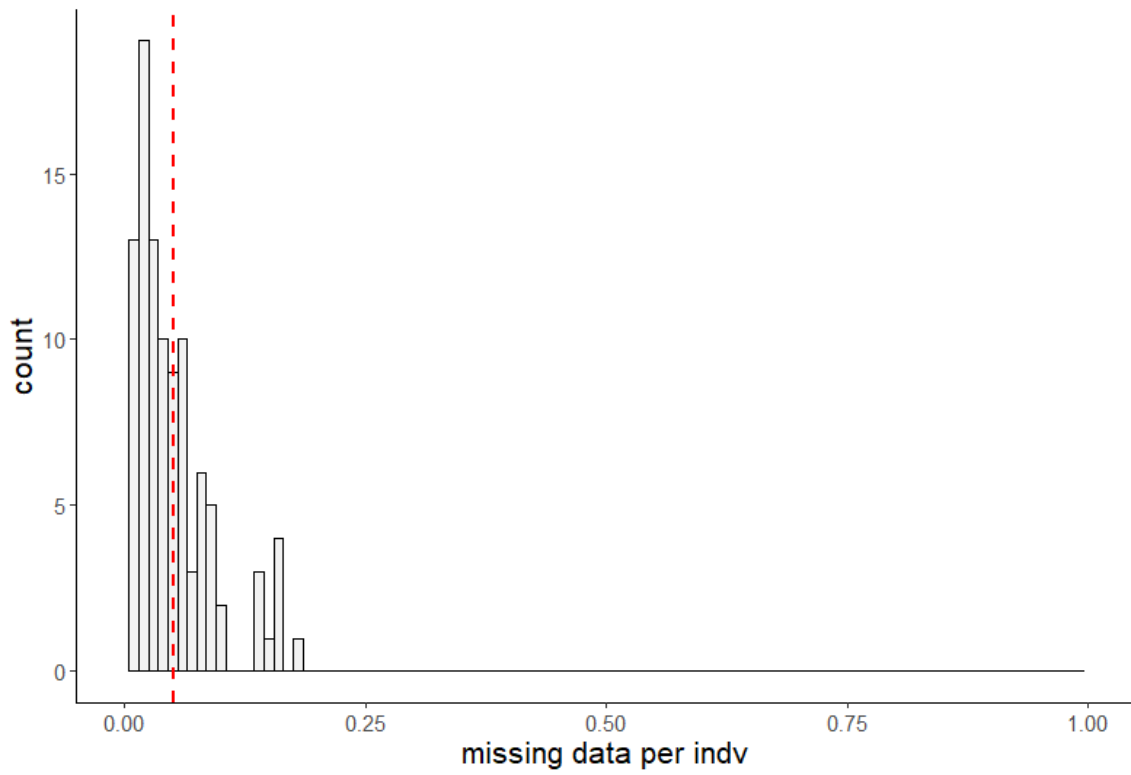
The output can be accessed at:

<https://repository.rothamsted.ac.uk/item/97188/contrasting-population-structure-and-demographic-history-of-cereal-aphids-in-different-environmental-and-agricultural-landscapes>.

© 17 January 2020, Please contact library@rothamsted.ac.uk for copyright queries.

Figure S1. Proportion of missing data per individual (a) and per locus (b) in the Chinese *S. miscanthi* SNP dataset after applying the filtering scheme.

a)



b)

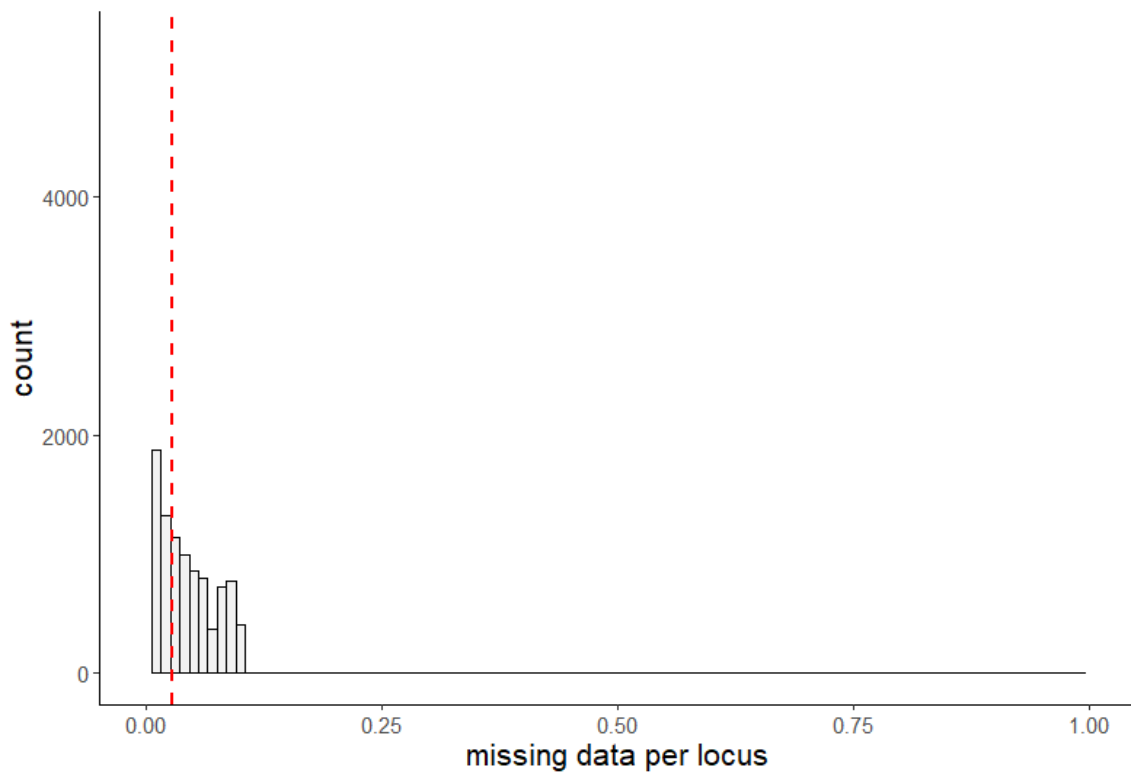
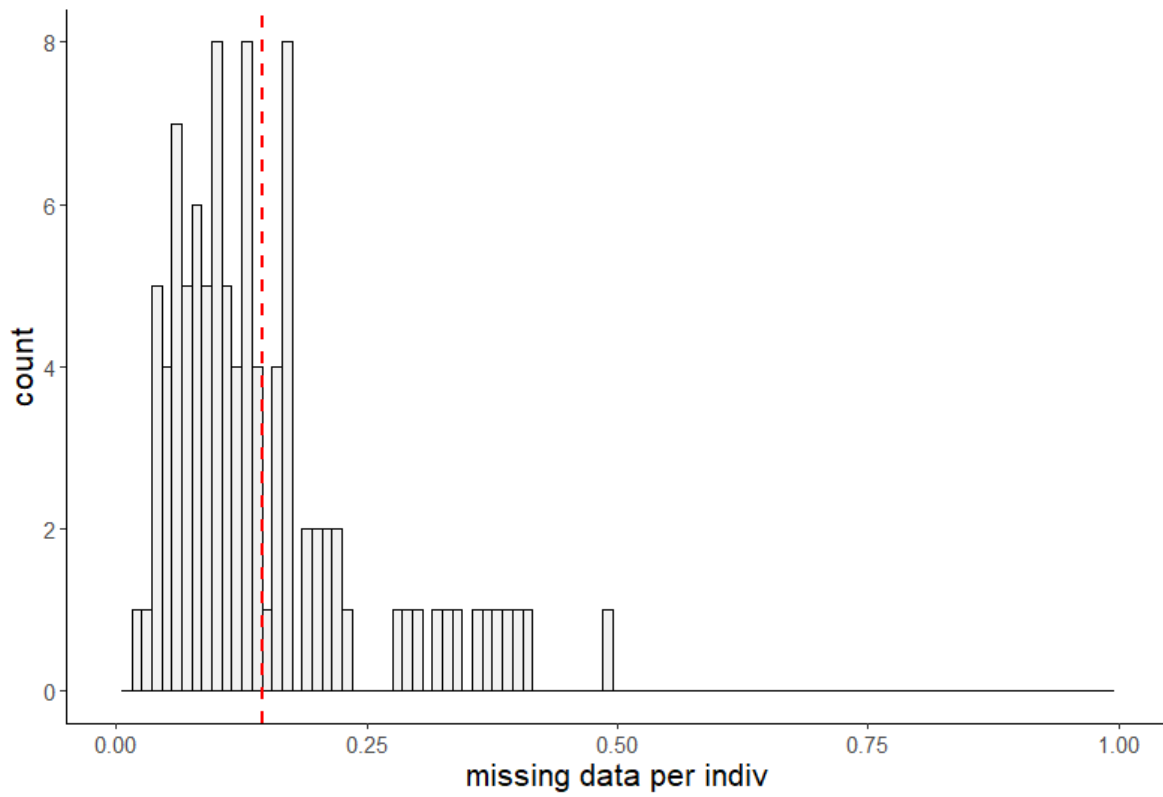


Figure S2. Proportion of missing data per individual (a) and per locus (b) in the English *S. avenae* SNP dataset after applying the filtering scheme.

a)



b)

