

Rothamsted Repository Download

A - Papers appearing in refereed journals

Stella, T., Webber, H., Olesen, J. E., Ruane, A. C., Fronzek, S., Bregaglio, S., Mamidanna, S., Bindi, M., Collins, B., Faye, B., Ferrise, R., Fodor, N., Gabaldon-Leal, C., Jabloun, M., Kersebaum, K-C., Lizaso, J. I., Lorite, I. J., Manceau, L., Martre, P., Nendel, C., Rodriguez, A., Ruiz-Ramos, M., Semenov, M. A., Stratonovitch, P. and Ewert, F. 2021. Methodology to assess the changing risk of yield failure due to heat and drought stress under climate change. *Environmental Research Letters*. 16 (10), p. 104033. <https://doi.org/10.1088/1748-9326/ac2196>

The publisher's version can be accessed at:

- <https://doi.org/10.1088/1748-9326/ac2196>

The output can be accessed at:

<https://repository.rothamsted.ac.uk/item/986yq/methodology-to-assess-the-changing-risk-of-yield-failure-due-to-heat-and-drought-stress-under-climate-change>.

© 6 October 2021, Please contact library@rothamsted.ac.uk for copyright queries.

LETTER • OPEN ACCESS

Methodology to assess the changing risk of yield failure due to heat and drought stress under climate change

To cite this article: Tommaso Stella *et al* 2021 *Environ. Res. Lett.* **16** 104033

View the [article online](#) for updates and enhancements.

You may also like

- [Microscopic description of proton-induced spallation reactions with the constrained molecular dynamics \(CoMD\) model](#)
A Assimakopoulou, G A Souliotis, A Bonasera *et al.*
- [Yields distribution of induced fission with improved scission point model](#)
XinHui Ruan, JiangTao Hu, Tao Rong *et al.*
- [Spallation reactions induced by 4.4 GeV deuterons on lead isotopes](#)
A R Balabekyan, G S Karapetyan, N A Demekhina *et al.*

ENVIRONMENTAL RESEARCH
LETTERS

LETTER

Methodology to assess the changing risk of yield failure due to heat and drought stress under climate change

OPEN ACCESS

RECEIVED

13 October 2020

REVISED

11 August 2021

ACCEPTED FOR PUBLICATION

26 August 2021

PUBLISHED

6 October 2021

Original content from this work may be used under the terms of the [Creative Commons Attribution 4.0 licence](https://creativecommons.org/licenses/by/4.0/).

Any further distribution of this work must maintain attribution to the author(s) and the title of the work, journal citation and DOI.



Tommaso Stella¹ , Heidi Webber^{1,*} , Jørgen E Olesen^{2,3,4}, Alex C Ruane⁵ , Stefan Fronzek⁶ , Simone Bregaglio⁷, Sravya Mamidanna¹, Marco Bindi⁸, Brian Collins⁹, Babacar Faye^{1,10}, Roberto Ferrise⁸, Nándor Fodor¹¹, Clara Gabaldón-Leal¹², Mohamed Jabloun¹³, Kurt-Christian Kersebaum^{1,2}, Jon I Lizaso¹⁴, Ignacio J Lorite¹², Loic Manceau¹⁵, Pierre Martre¹⁵ , Claas Nendel^{1,16} , Alfredo Rodríguez^{14,17}, Margarita Ruiz-Ramos¹⁴, Mikhail A Semenov¹⁸ , Pierre Stratonovitch¹⁸ and Frank Ewert^{1,19}

¹ Leibniz Centre for Agricultural Landscape Research (ZALF), Müncheberg, Germany

² The Czech Academy of Sciences, Global Change Research Institute, Brno, Czech Republic

³ Department of Agroecology, Aarhus University, Tjele, Denmark

⁴ iCLIMATE Interdisciplinary Centre for Climate Change, Aarhus University, Roskilde, Denmark

⁵ NASA Goddard Institute for Space Studies, New York, NY, United States of America

⁶ Climate Change Programme, Finnish Environment Institute (SYKE), Helsinki, Finland

⁷ CREA—Council for Agricultural Research and Economics, Research Centre for Agriculture and Environment, Bologna, Italy

⁸ Dipartimento di Scienze e Tecnologie Agrarie, Alimentari, Ambientali e Forestali (DAGRI)—Università degli Studi di Firenze, Firenze, Italy

⁹ College of Science and Engineering, James Cook University, Townsville, Australia

¹⁰ Institut de recherche pour le développement (IRD), ESPACE-DEV Montpellier, France

¹¹ Crop Production Department, Agricultural Institute, Centre for Agricultural Research, Martonvásár, Hungary

¹² Institute of Agricultural and Fisheries Research and Training (IFAPA), Centre 'Alameda del Obispo', Córdoba, Spain

¹³ Plant Production Systems Group, Wageningen University & Research, Wageningen, The Netherlands

¹⁴ CEIGRAM, Universidad Politécnica de Madrid, Madrid, Spain

¹⁵ LEPSE, Université Montpellier, INRAE, Institut Agro Montpellier SupAgro, Montpellier, France

¹⁶ Institute of Biochemistry and Biology, University of Potsdam, Potsdam, Germany

¹⁷ Department of Economic Analysis and Finances, Universidad de Castilla-La Mancha, Toledo, Spain

¹⁸ Rothamsted Research, West Common, Harpenden, Hertfordshire, United Kingdom

¹⁹ Institute of Crop Science and Natural Resource Management (INRES), University of Bonn, Bonn, Germany

* Author to whom any correspondence should be addressed.

Keywords: climate risk assessment, climate change impact, wheat, maize, crop model, relative distribution

Supplementary material for this article is available [online](#)

Abstract

While the understanding of average impacts of climate change on crop yields is improving, few assessments have quantified expected impacts on yield distributions and the risk of yield failures. Here we present the relative distribution as a method to assess how the risk of yield failure due to heat and drought stress (measured in terms of return period between yields falling 15% below previous five year Olympic average yield) responds to changes of the underlying yield distributions under climate change. Relative distributions are used to capture differences in the entire yield distribution between baseline and climate change scenarios, and to further decompose them into changes in the location and shape of the distribution. The methodology is applied here for the case of rainfed wheat and grain maize across Europe using an ensemble of crop models under three climate change scenarios with simulations conducted at 25 km resolution. Under climate change, maize generally displayed shorter return periods of yield failures (with changes under RCP 4.5 between -0.3 and 0 years compared to the baseline scenario) associated with a shift of the yield distribution towards lower values and changes in shape of the distribution that further reduced the frequency of high yields. This response was prominent in the areas characterized in the baseline scenario by high yields and relatively long return periods of failure. Conversely, for wheat, yield failures were projected to become less frequent under future scenarios (with changes in the return period of -0.1 to $+0.4$ years under RCP 4.5) and were associated with a shift of the distribution towards higher values and a change in shape increasing the frequency of extreme yields at both

ends. Our study offers an approach to quantify the changes in yield distributions that drive crop yield failures. Actual risk assessments additionally require models that capture the variety of drivers determining crop yield variability and scenario climate input data that samples the range of probable climate variation.

1. Introduction

Impacts of climate change on crops are already observed across world regions (Ray *et al* 2019). In the coming decades, the projected increase in drought (Grillakis 2019, Trnka *et al* 2019, Xu *et al* 2019) and heat extremes (Coumou and Robinson 2013, Lelieveld *et al* 2016, Chatzopoulos *et al* 2020) and the occurrence of compound events (Zscheischler *et al* 2018, Feng *et al* 2019, Toreti *et al* 2019, Ribeiro *et al* 2020) are expected to amplify existing risks to food production (IPCC 2014). Increased climate variability may drive higher crop yield variability (Porter and Semenov 2005) with potential implications both for farmers (Kimura *et al* 2010) and global markets, where price shocks induced by simultaneous yield failures across regions may threaten food security (Wheeler and Von Braun 2013, Challinor *et al* 2018).

With extreme weather events projected to increase (Field 2012) and the recent years' record yield failures across world regions, the demand to assess impacts of extreme events and the risk of yield failure has increased (Wheeler and Von Braun 2013). Understanding the drivers of risk of yield failure is a precondition for developing adaptation strategies for risk management, such as insurance solutions against specific weather risks (EC 2018), planning for investments in irrigation infrastructure (Zou *et al* 2013, FAO 2019) or tailored crop breeding (Tao *et al* 2017, Kahiluoto *et al* 2019). With climate change, the reliance on only historical yield distributions of crop yields is challenged as interactions between CO₂ concentrations, temperatures and crop water demand present challenges to extrapolating historical data with statistical models (Lobell and Asseng 2017). Such interactions are considered by process based crop models, which dynamically simulate crop resource capture and yield formation in response to environment and management drivers under future climate scenarios (Ewert *et al* 2015). However, they often fail to capture many of yield reducing factors, such as soil constraints, pests, disease or extreme weather that shape yield distribution (Schewe *et al* 2019, Webber *et al* 2020b). Webber *et al* (2018) presented a crop model ensemble analysis that allowed to distinguish the effects of drought stress, heat stress and mean warming on crop yields in Europe with climate change. Over all years, they projected increased yield losses due to drought for maize, and that drought would drive yield losses for maize and wheat in low yielding years. To date, the majority of climate change impact studies have quantified how

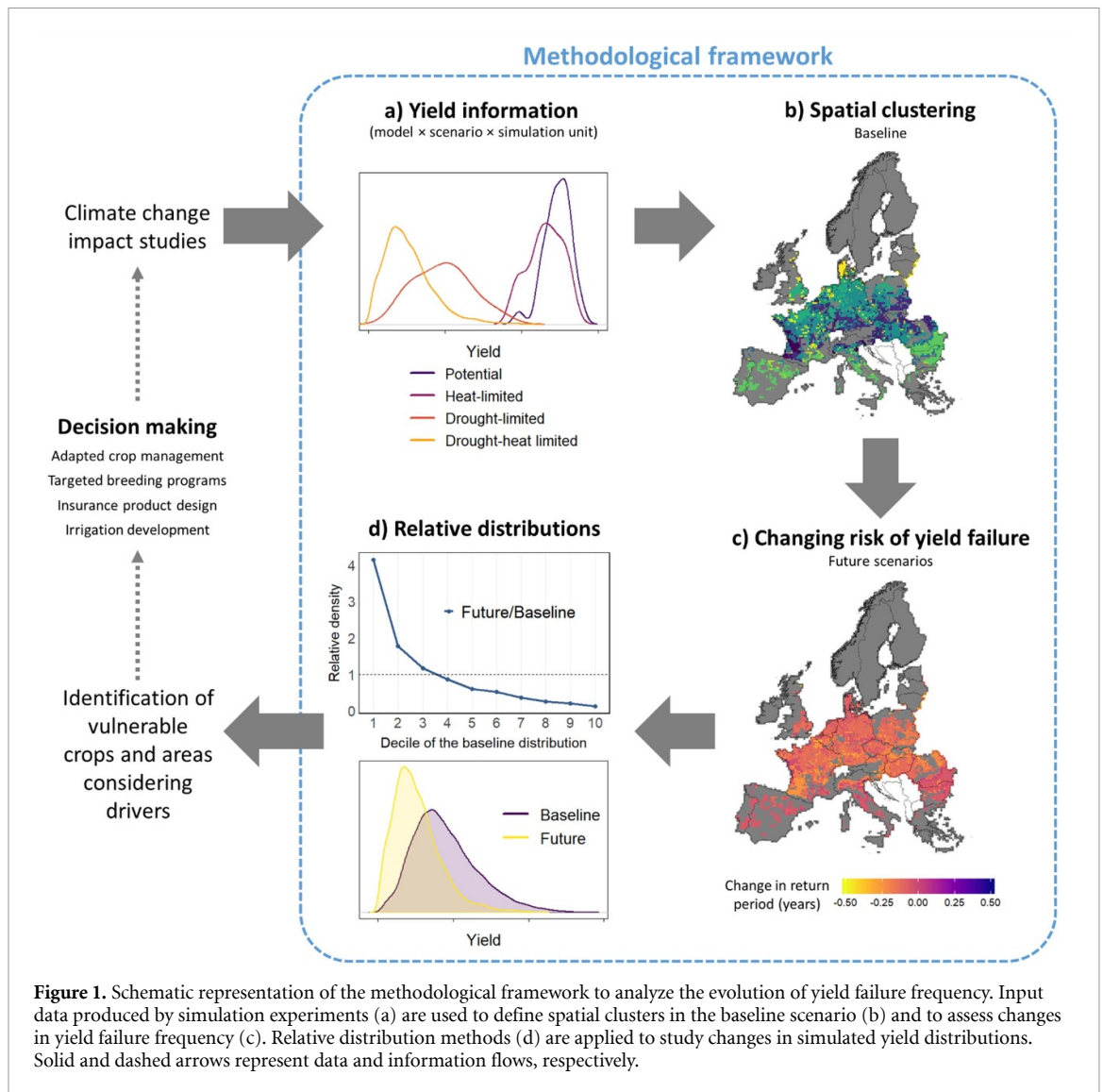
average yields change, as this has important implications for global agricultural markets. However, studying only average climate-yield relationship provides limited insights into climate-driven risk that is more closely related to changes in yield variability. A growing body of literature is focusing on the influence of climate on yield variability (e.g. Kassie *et al* 2014, Ray *et al* 2015, Leng 2017). Our study adds to this research by trying to distinguish the differential impacts of climate change on upper and lower tail of the yield distribution (Malikov *et al* 2020).

Here, we demonstrate and explore a methodological framework to assess the climate-driven changes in risk of yield failure and in yield distributions. The first objective of the framework was to quantify changes in the return period of yield failure under climate change. A second objective was to identify the patterns of changes in the underlying yield distributions associated with the changes in risk of yield failure. Relative distribution methods (Handcock and Morris 1998) were used for representing distributional differences between yields under baseline and climate change scenarios, to reveal precisely where and by how much the two distributions differ, information which may be lost with parametric approaches. As a case study, we applied the framework to an ensemble of process-based crop models for rainfed maize and wheat in Europe for three representative concentration pathway (RCP) scenarios (Webber *et al* 2018), considering the combined effect of heat and drought stress (without disentangling these yield drivers).

2. Materials and methods

2.1. Methodological framework

An overview of the methodological steps to evaluate the changes in risk of yield failure and in the underlying yield distributions under climate change is presented in figure 1. First (figure 1(a)), simulations results from an ensemble of crop and climate models were processed (figure 1(a)) as described in section 2.2. The second methodological step involved grouping (figure 1(b); section 2.3) the simulation results into spatial clusters based on yields in the baseline scenario and stress intensity. The clustering was performed to provide discrete units for the subsequent analysis and to provide large enough sample of data to apply the relative distribution methods. In the third step, yield failure under baseline climate (as defined in section 2.4) and the relative change in return periods between successive yield failures under climate



change scenarios were quantified (figure 1(c); results presented in section 3.2). The next methodological step was the application of the relative distributions (figure 1(d); section 2.5) to assess which aspects of the underlying yield distributions were driving the changed yield failure frequencies. This is a non-parametric framework that summarizes the differences between two distributions (here crop yields under baseline climate and climate change scenarios) with a single curve, highlighting differences occurring throughout the entire range of values (simulated yields in this study). The relevant features of the source dataset used as case study are described in section 2.6.

2.2. Crop yield simulations and drivers

Data used in this analysis were time series of crop yields simulated by an ensemble of crop and climate models under potential (Y_{POT}), heat-limited (Y_{HL}), drought-limited (Y_{WL}), and drought-heat limited (Y_{WHL}) conditions under baseline climate and climate change scenarios across a grid of simulation

units (see section 2.6). Under any growing condition, 30 year time series of yields were available in each simulation unit and climate scenario for any combination of crop × climate model. Heat and drought limited yields were related to potential yields in the baseline climate scenario to produce time series of stress indices calculated according to equation (1):

$$StressIndex_{(i,t,m)} = 1 - \frac{Y_{lim(i,t,m)}}{Y_{POT(i,t,m)}} \quad (1)$$

where StressIndex and correspond to HS (for heat stress) or WS (for drought stress), Y_{lim} either to Y_{HL} (for heat stress) or Y_{WL} (for drought), i is the simulation unit, t the year and m either the crop model. These indices represent the independent contribution of heat and drought to the yield gap between Y_{POT} and Y_{WHL} . Stress indices range from 0 (indicating no stress) to 1 (no yield at harvest due to the stress).

2.3. Spatial clustering

For each crop model, the average value of the time series of Y_{POT} , Y_{WHL} , HS and WS were used to

characterize the typical production situation in each simulation unit under baseline climate. Such indicators were selected as the measures summarizing the yield potential and main yield drivers accounted for by the models, i.e. potential yields determined by CO₂ assimilation and conversion as modulated by solar radiation and temperature regimes for a given variety (Y_{POT}), the independent influence of water stress (WS) and heat stress (HS), and finally, water-heat limited yields as the outcome of both stressors (Y_{WHL}). For each of these measures, the median across crop models was used to characterize the ensemble response in each simulation unit (equation (2)). Considering the spread across different crop models, the median was preferred over the average for its robustness against outliers

$$EE_x = \text{median} \left\{ \left(\frac{1}{n} \sum_{t=1}^n x_t \right) \mid m \in M \right\}. \quad (2)$$

where EE_x is the ensemble estimate, t the year in the time series, x is either Y_{WHL} , Y_{POT} , WS or HS, and m the models in the set of crop models M used in this study. Simulation units were then clustered using ensemble estimates of Y_{WHL} , Y_{POT} , WS and HS in the baseline scenario, identifying areas with homogenous yields and drivers (i.e. simulation units falling in the same category for the four ensemble estimates). Y_{WHL} , Y_{POT} and WS were classified based on their range simulated across the study area as low (lower quartile), medium (interquartile range) or high (upper quartile); HS, due to less variation, was divided into two classes only (low and medium-low). Clustering was performed to provide an overview of the emergent spatial patterns of yields and the yield drivers in the baseline while generating large enough samples of yield data for the application of relative distribution methods (section 2.5).

2.4. Yield failures

A yield failure was counted when simulated yield was lower than a threshold relative to the Olympic average yield of the previous five-years (Webber *et al* 2020b), i.e. the average yield obtained ignoring the highest and lowest yields in the preceding five-year period. Olympic averages, as commonly used by the insurance industry and governments to define yield failures (EC 2017), were used to ensure the definition of yield failures were not biased by the occurrence of exceptionally good or bad yields in the recent past. The definition of failure follows European guidelines (EC 2017) that identify a natural or other disaster by a production loss, which exceeds 30% of the average of production. Since a lower threshold for crop failure may be more appropriate for risk analysis at aggregate scales (Finger 2012, Heimfarth *et al* 2012, Webber *et al* 2016, Ben-Ari *et al* 2018), we assumed the threshold of 15% as a reference for the current

study. The frequency of yield failure in each simulation unit and scenario was quantified as the average return period (R_F) between successive failures. For each simulation unit, crop, crop model and climate scenario, R_F was estimated using time series of Y_{WHL} (thus accounting for the joint effects of drought and heat) to count the number of occurrences of a failure. The model ensemble median of R_F was used as a risk indicator for each simulation unit under baseline and climate change scenarios (independently for each RCP). The ensemble estimates of R_F were further aggregated at the level of spatial clusters (equation (3)) based on current production area (MIRCA2000; Portmann *et al* 2010):

$$RF_{E(d,s)} = \sum_{i=1}^n RF_{E(i,d,s)} \times w_{(i,d)} \quad (3)$$

where RF_E is the ensemble estimate of the return period of a failure, w the fraction of the production area in the simulation unit relative to the total area in the spatial cluster (d), i the simulation unit within the cluster, and s the climate scenario. To explore the uncertainty across models, the ensemble median of R_F was calculated separately for (a) the pool of all the crop and climate models, (b) individual crop models (median across climate models) and (c) individual climate models (as the median across crop models).

2.5. Assessing distributional yield changes under climate change

Changes in crop yields between baseline and climate scenarios were quantified for Y_{WHL} at the level of spatial clusters using the relative distribution methods, a set of non-parametric statistical approaches developed by Handcock and Morris (1998, 1999). The relative distribution methods compare two populations (respectively 'reference' and 'comparison') based on the fraction of the comparison distribution that fall in each quantile of the reference one. This allows to locate and identify the changes occurred across the entire distribution between the two populations. Differences are encoded by a single line, i.e. the relative density. When there are no changes between the two distributions, the relative density equals to 1 for all quantiles. Values higher (lower) than 1 indicate an increase (decrease) share of yields in the comparison distribution at the level identified by the r th quantile of the reference distribution. Differences due to changes in location (mean or median) can be isolated from those involving the shape of the distribution and quantified by summary measures (for more details, see supplementary S1 (available online at stacks.iop.org/ERL/16/104033/mmedia)). In this study, yields in the baseline climate and under climate change scenarios were taken as the reference and comparison populations, respectively. The analysis was conducted in R (R Core Team 2019) using the package 'reldist' (Handcock 2016).

Relative densities were evaluated within each spatial cluster for all the combinations crop model \times climate scenario by pooling Y_{WHL} from all simulation units of the cluster. Current production areas (MIRCA2000; Portmann *et al* 2010) within the simulation units were used as weights for both the reference and comparison population. Data limitation prevented to evaluate the relative distribution at the scale of the single simulation unit, where data were not available for each quantile of the distribution. The choice of clustering simulation units was a pragmatic solution to reach the recommended minimum sample size (100–1000 observations; Handcock and Morris 1998), but constrained the resolution of the analysis to an aggregate level. For any combination of cluster \times climate change scenario, the relative density at each decile of the reference population was calculated separately for (a) the pool of all the crop and climate models, (b) individual crop models (median across climate models) and (c) individual climate models (as the median across crop models). This allowed to explore the uncertainty in the relative density due to crop and climate models. The main patterns (types) of the changes in yield distributions across the study area and the climate change scenarios were identified applying hierarchical clustering (Suzuki *et al* 2019) to the ensemble estimates based on all crop and climate models of relative density.

2.6. Data source

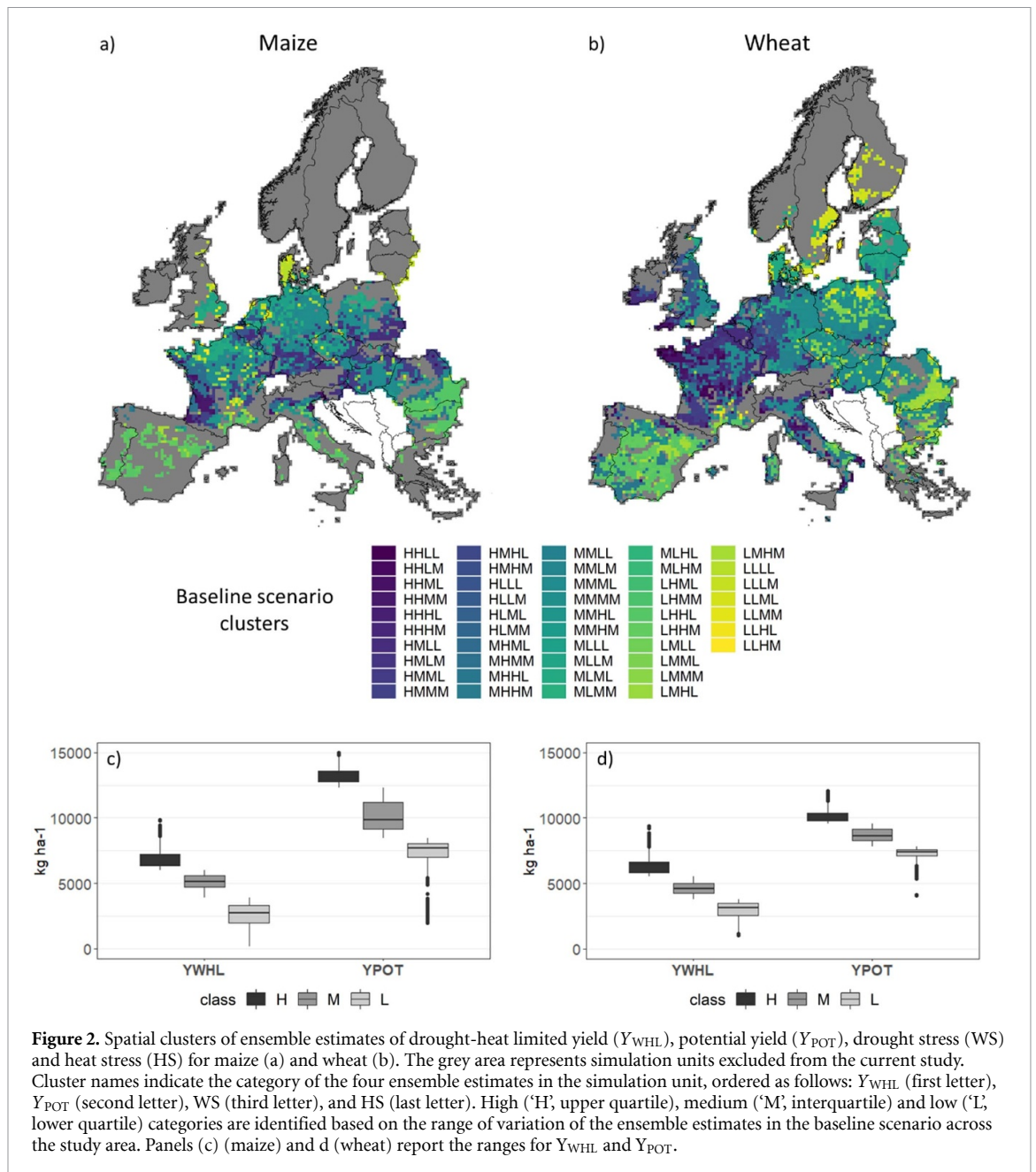
The data for the current analysis were retrieved from Webber *et al* (2020a; doi: 10.4228/ZALE.DK.88). This dataset consists of an ensemble of eight crop models accounting for the impact of drought and heat stress on wheat and maize production (supplementary S2). In the study by Webber *et al* (2018), drought and heat stresses were quantified as the reduction of crop yield resulting respectively from water deficit during the crop cycle and periods of high temperature experienced around flowering and/or seed set. Gridded simulations (25 km horizontal resolution) covering the land area across the EU-27 (8157 simulation units) were available in the source dataset for baseline scenario (1981–2010) and future climate scenarios (2040–2069) for three RCPs (RCP 2.6, 4.5 and 8.5). The climate projections were available for five climate models (General Circulation Models, GCMs) under two forcing scenarios RCP 4.5 and 8.5, and two climate models under RCP 2.6. For each simulation unit and climate scenario (i.e. the combination of GCM \times RCP), treatments were simulated for potential, heat-limited, drought-limited and drought-heat limited crop yields (supplementary S2). Full irrigation was simulated for potential and heat limited simulations, whereas under drought treatments crops were rainfed. To simulate yields without effects of heat stress (for potential and drought-limited treatments), modelers either switched off heat stress routines or set threshold temperature limits

very high such that no heat stress damage was simulated. In all simulations, soil water content was re-initialized at sowing, and nitrogen was not considered as a limiting factor. Observed sowing, flowering and harvest dates were taken from the Eurostat (Eurostat, <http://ec.europa.eu/eurostat/web/main>) and then aggregated to the level of 1 of 13 agro-environmental zones across Europe (Metzger *et al* 2005) following the procedure reported in Zhao *et al* (2015) and Webber *et al* (2015). These phenology data were then resampled to the level of the simulation unit and used with simulation unit specific climate data in the baseline conditions to calibrate crop phenology parameters. For the climate change scenarios, simulations were available for baseline $[\text{CO}_2]$ (360 ppm) and elevated $[\text{CO}_2]$ of 442 ppm (RCP 2.6), 499 ppm (RCP 4.5) and 571 ppm (RCP 8.5). For the current analysis, we used simulated heat stress with canopy temperature, as this is considered more appropriate, although for two models only simulations using air temperature were available. For future scenarios, only simulations with elevated $[\text{CO}_2]$ were considered. The current analysis was restricted to rainfed cropping systems, i.e. simulation units characterized by at least 500 ha of rainfed area based on the MIRCA2000 global data set on crop area (Portmann *et al* 2010).

3. Results

3.1. Spatial clusters under baseline climate

When considering the range of variation of Y_{WHL} , Y_{POT} , WS and HS, a total of 47 clusters were identified for maize and wheat, forming the basis of subsequent analysis (figure 2). Some common features arose between the two crops across Europe. Areas where both Y_{WHL} and Y_{POT} were in the high range (i.e. clusters with ‘HH’ as the first two letters of the cluster name in figure 2) were found in France for maize (in the West) and wheat (North-West and Center). In wheat, such cluster reached areas scattered throughout Italy and Spain. However, a major portion of Spain, as well as part of the Mediterranean basin, were characterized by areas with the highest potential yields and intermediate to high levels of drought stress, as illustrated by the larger extent of clusters ‘LH’ (first two letters code) for both crops and ‘MH’ for wheat compared to ‘HH’ (figure 2). Conversely, large areas in Central and Northern Europe displayed intermediate and high Y_{WHL} , and a smaller difference between Y_{WHL} and Y_{POT} due to a relatively lower impact of drought. On the other hand, areas in Northern Europe (Scandinavian countries for wheat and mainly Denmark for maize) displayed low yields both in potential and actual conditions (clusters ‘LL’ in figure 2), indicating thermal and solar radiation regimes as main limiting factors for crop growth. In both crops, the magnitude of heat stress was limited when compared to drought stress.

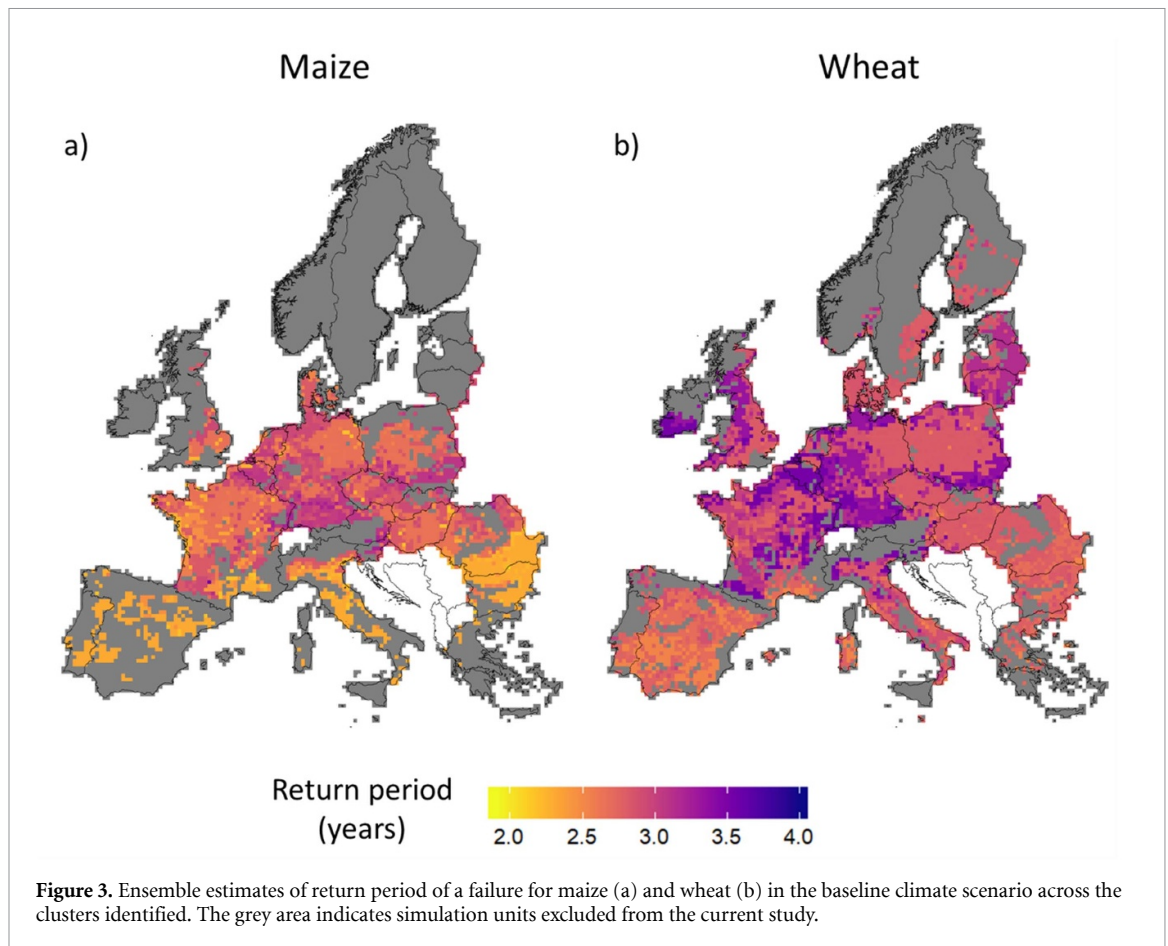


3.2. Yield failure frequency changes

The return period of failures from drought and heat stress in the baseline climate scenario ranged from about 2.1–3.6 years for maize, and between 2.5 and 3.6 years for wheat when aggregated for the spatial clusters identified (figure 3, supplementary S3). In both crops, ensemble estimates of return period decreased while moving from clusters characterized by higher yields and limited drought stress to the ones with lower yields and greater stress. As a result, a North-South gradient was present, with Southern Europe mostly characterized by lower Y_{WHL} and shorter yield failure return periods.

Under climate change scenarios, shorter return periods for crop failure were observed for maize, as opposed to the generally longer return periods for

wheat. Under limited climate forcing, wheat displayed a mixed response, with shortening and increasing return periods almost equally represented across the study area. The magnitude of the change in return period of a failure was RCP-dependent, especially for wheat. (figures 4 and 5). Regardless the RCP considered, failures that became more frequent were more pronounced for maize in the areas characterized by the highest yields in the baseline scenario (i.e. clusters H. Y_{WHL} -H. Y_{POT} , H. Y_{WHL} -M. Y_{POT} and H. Y_{WHL} -L. Y_{POT} in figure 2). A significant negative relationship between baseline return period and its change under all the RCP scenarios was observed for maize (supplementary S4). For wheat, the high yielding clusters in the baseline scenario were among the areas that mostly benefited from the increase in return

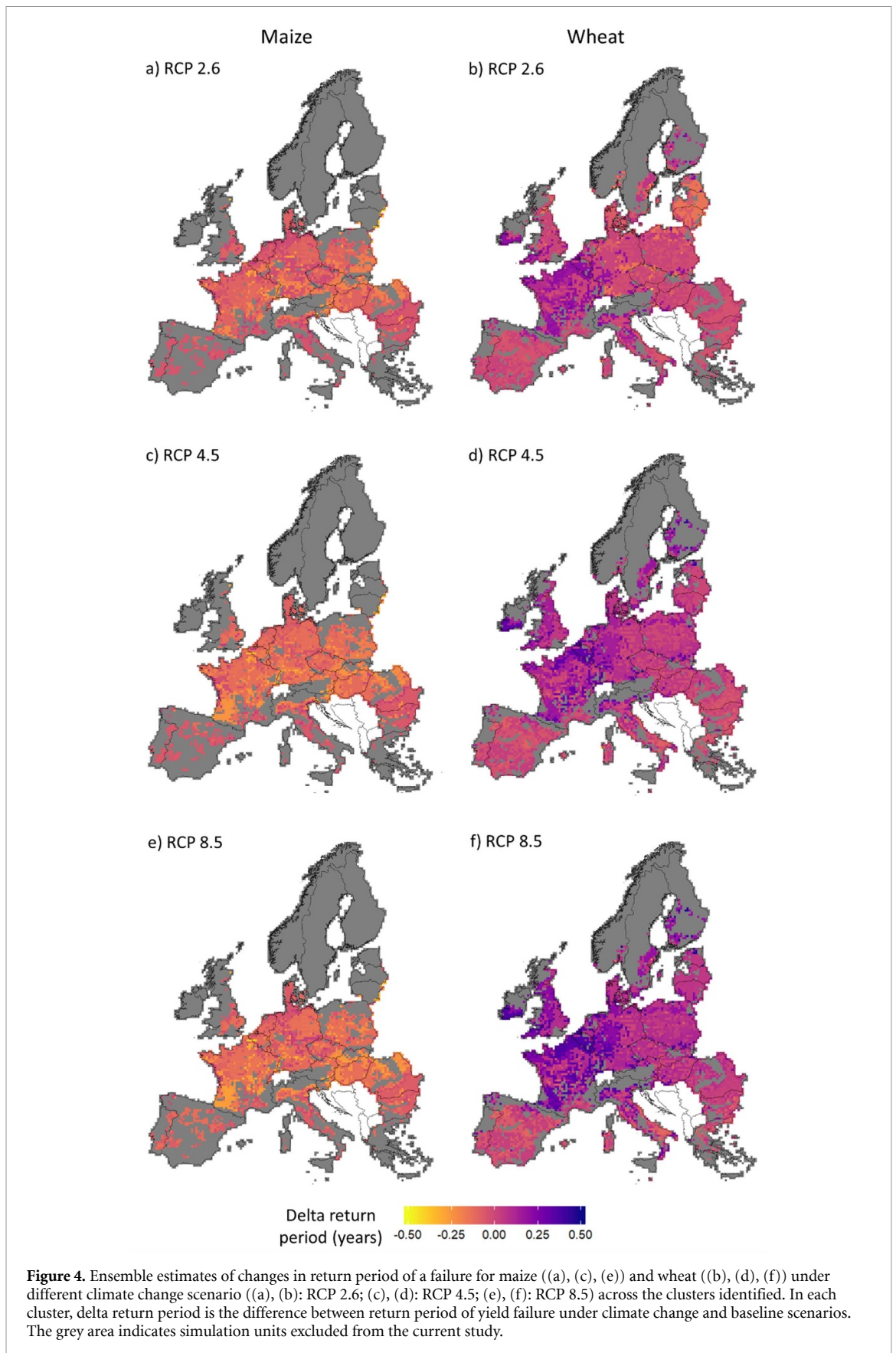


periods. A comparable increase in the return period was observed, for wheat, also in the clusters characterized by low yield and low potential in the baseline scenario (i.e. $L.Y_{WHL}-L.Y_{POT}$ in figure 2), particularly under RCPs 4.5 and 8.5 (figures 4(d) and (f)). The response described for the ensemble of all crop and climate models (figure 5(a)) was consistent with the one from individual climate models (figure 5(c)). The response from individual crop models, on the other hand, was more uncertain and characterized by less agreement in the sign of the change in return period of yield failures among ensemble members (figure 5(b)).

3.3. Relative distribution analysis

Our analysis highlighted diverging responses of the yield distributions (Y_{WHL}) of maize and wheat to climate change (figure 6). Depending on the crop, the relative density is greater than 1 at the opposite ends of the distributions, depicting a general increase of probability of low yields for maize (figure 6(a)) and of high yields for wheat (figure 6(c)) under climate change scenarios. Three main response types were identified for each crop across the spatial clusters covering the study area. For maize, an increase in the frequency of yields in the lowest deciles was projected for all types, in particular for extreme low yields. The regions least negatively affected by climate change

(corresponding to ‘low-neg’ type in figure 6(a)) displayed relative densities between 1 and 1.3 for yield levels below the median baseline yield level. An almost symmetric decrease in the relative densities for high yields was observed. The other two types identified for maize (i.e. ‘mid-neg’ and ‘hi-neg’, increasingly affected by climate change) followed a similar pattern, but with more dramatic variations at the extremes (figure 6(a)). For all the types, the overall relative distribution resulted from the combined effects of a location (mean) shift toward lower values and a change in shape that reduced the frequency of extreme values at both ends of the distribution. The changes in shape partially mitigated the location effect for low yields while further reducing the occurrence of yields in the highest deciles (supplementary S5). While moving from areas less negatively affected by climate change (type ‘low-neg’) to areas displaying relative distributions of type ‘mid-neg’ and ‘hi-neg’, the contribution of location changes to the overall relative distribution increased while the shape effect decreased (figure 6(b)). The relative distributions from individual crop and climate models were consistent with those outlined by the ensemble median for maize. Crop and climate models contributed to a similar extent to uncertainty, which was more marked at the lowest and highest deciles (figures 7(a)–(c)).



For maize, the three types of relative distributions had a different extent and spatial allocation across Europe depending on the RCP (figure 8). The least negative response of yield distribution to climate

change ('low-neg') was prominent under RCP 2.6 (covering about 70% of the total rainfed area), with medium and high impact responses relegated to a transect crossing Central Europe (with a coverage of

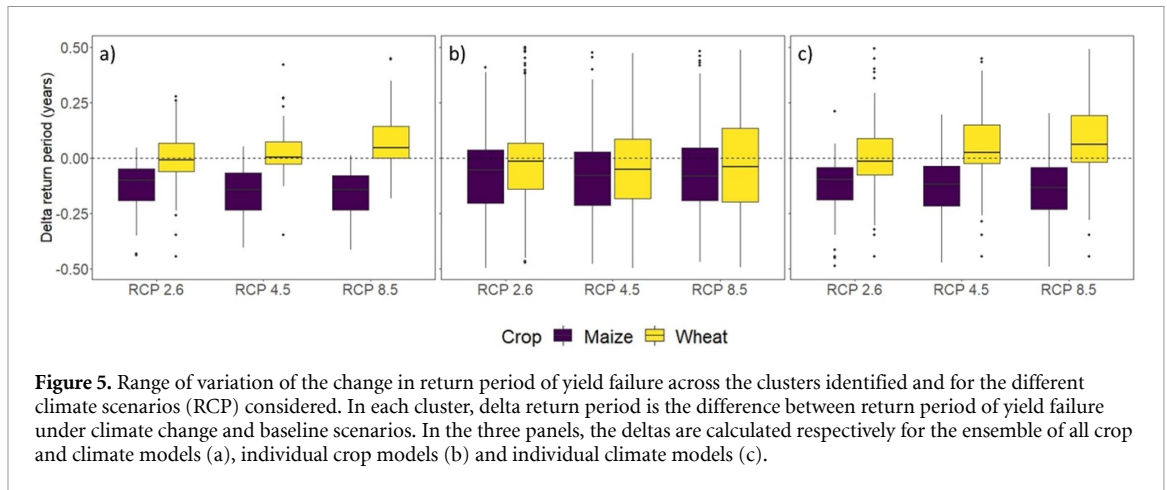


Figure 5. Range of variation of the change in return period of yield failure across the clusters identified and for the different climate scenarios (RCP) considered. In each cluster, delta return period is the difference between return period of yield failure under climate change and baseline scenarios. In the three panels, the deltas are calculated respectively for the ensemble of all crop and climate models (a), individual crop models (b) and individual climate models (c).

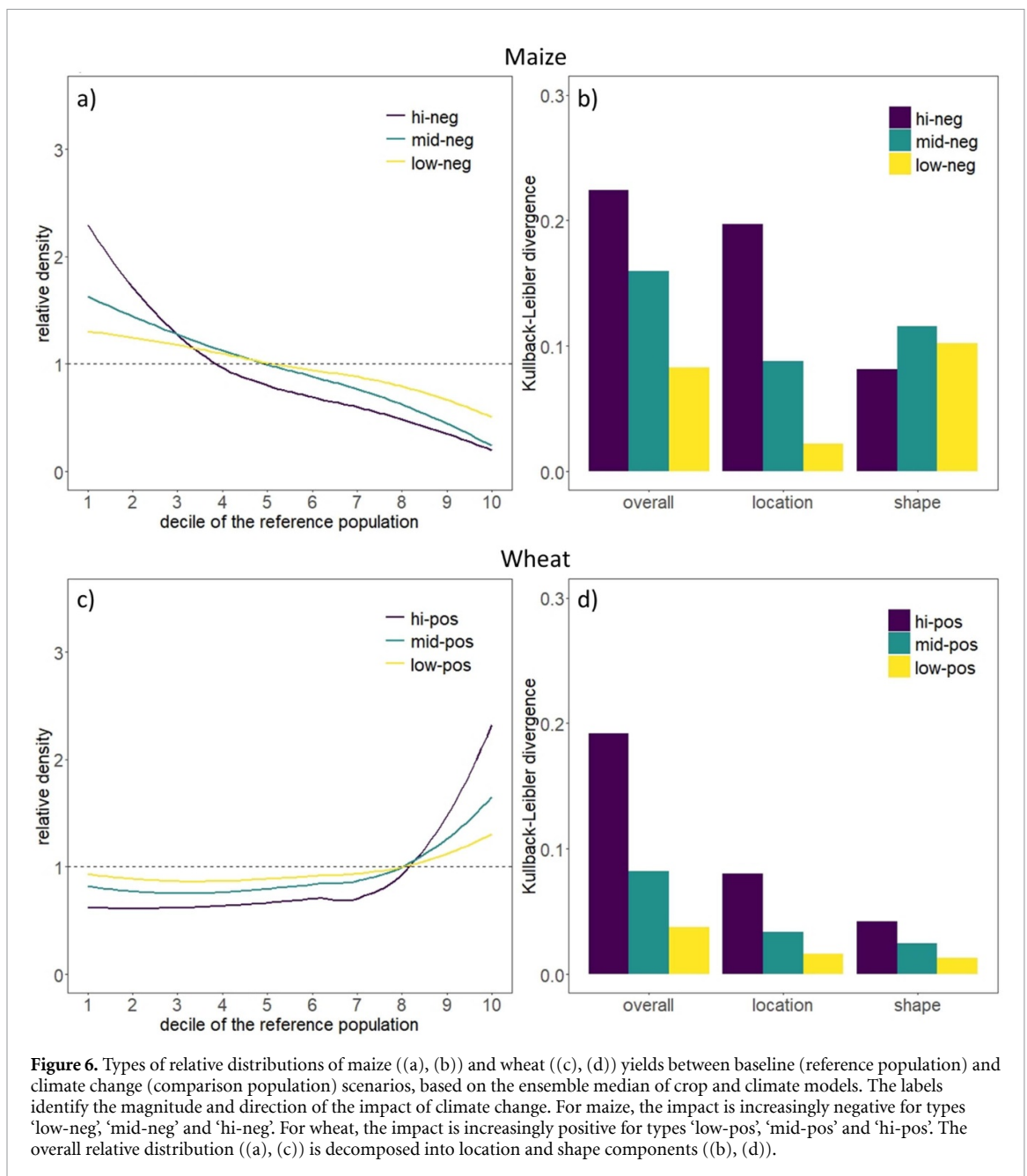
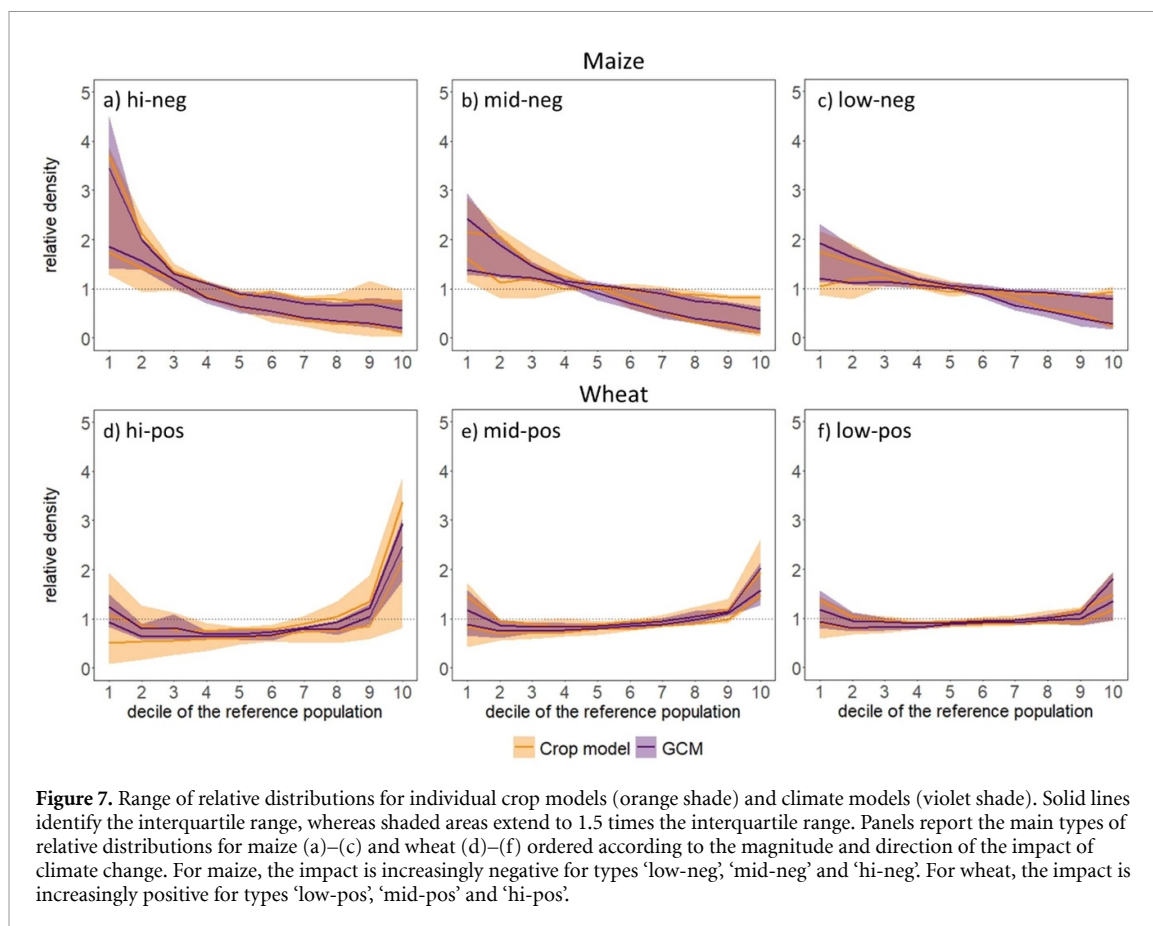


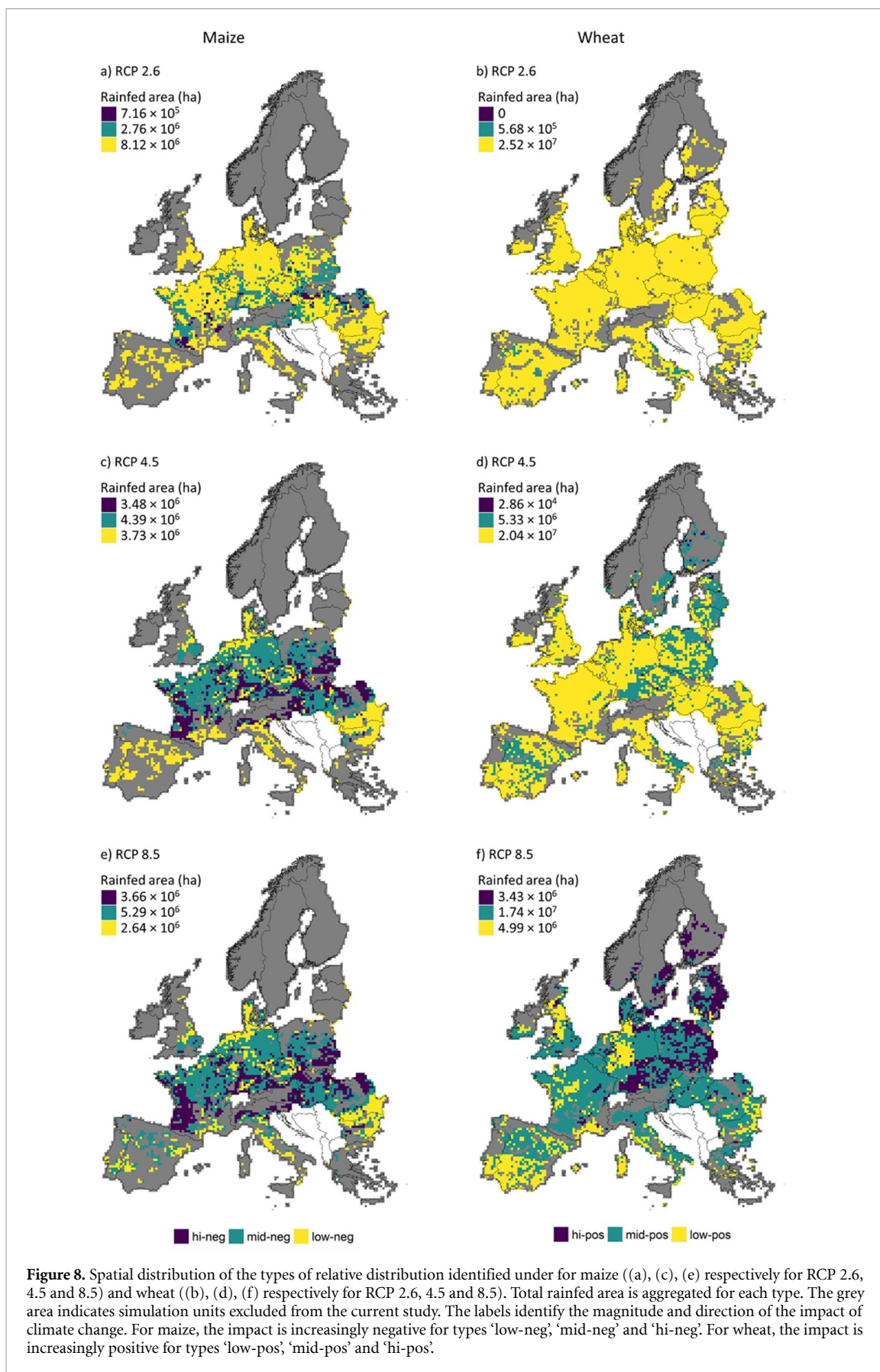
Figure 6. Types of relative distributions of maize ((a), (b)) and wheat ((c), (d)) yields between baseline (reference population) and climate change (comparison population) scenarios, based on the ensemble median of crop and climate models. The labels identify the magnitude and direction of the impact of climate change. For maize, the impact is increasingly negative for types ‘low-neg’, ‘mid-neg’ and ‘hi-neg’. For wheat, the impact is increasingly positive for types ‘low-pos’, ‘mid-pos’ and ‘hi-pos’. The overall relative distribution ((a), (c)) is decomposed into location and shape components ((b), (d)).



24% and 6%, respectively; figure 8(a)). Under higher forcing scenarios, high impact responses covered the majority of the land area used for rainfed maize production (figures 8(c) and (e)). The ‘mid-neg’ and ‘high-neg’ responses covered 38% and 30% of the total rainfed area in Europe under RCP 4.5. The respective values for RCP 8.5 were 46% and 23%. A ‘low-neg’ response generally occurred in areas characterized in the baseline scenario by more frequent yield failures and medium to low drought-heat limited yields, whereas ‘mid-neg’ and ‘high-neg’ responses were associated with more favorable conditions in the baseline (longer return periods for yield failure and higher drought-heat limited yield). Under higher forcing scenarios (RCPs 4.5 and 8.5), the ‘mid-neg’ and ‘high-neg’ responses extended into less favorable areas. Regardless the climate scenario, ‘low-neg’ response was associated with a limited shortening of the return period of yield failures, whereas higher impact responses were associated with increased shortening of the return period for a yield failure (supplementary S6).

Relative distributions of wheat yields showed distinct responses compared to maize. Under RCP 4.5, the probability of high yields ($r \geq 0.8$) increased, whereas the probability of lower yields decreased. Three response types were identified based on the magnitude of such changes (figure 6(c)). A response ‘hi-pos’ identified areas where crop yields benefited

the most from climate change, with a relative density of yields in the top decile just above 2.5 and a decrease (with relative density of about 0.6) in yields in the low end of the distribution. The other types displayed relative densities in the top decile around 1.7 (‘mid-pos’) and 1.3 (‘low-pos’), and almost no changes in the probability of extreme low yields for ‘low-pos’. For all the response types, distributional differences resulted from a shift in the mean towards higher values combined with a change of shape that tended to increase frequency of extreme values at both ends (supplementary S5). For ‘high-pos’ response, the influence of the location effect dominated the overall distributional differences, whereas for the other types a more balanced contribution of location and shape changes was observed (figure 6(d)). The uncertainties in the relative distributions were less marked for wheat than for maize, with differences among crop models playing a major role (figures 7(d)–(f)). A ‘low-pos’ response was the most widely represented under RCP 2.6 (98% of the total rainfed area; figure 8(b)) and RCP 4.5 (79%; figure 8(d)), outlining a widespread mild positive impact of climate change on simulated wheat yields. Under higher forcing scenarios, the extent of ‘mid-pos’ response increased (21% and 67% of the area under RCP 4.5 and 8.5, respectively; figures 8(d) and (f)). A ‘high-pos’ response to climate change was observed almost only under RCP 8.5 (figure 8(f)), where it covered about 13% of the



land area, mainly in Central and Northern Europe. Under RCP 4.5, a 'low-pos' response was mainly associated with the spatial clusters displaying the highest yields in the baseline scenario, whereas a 'mid-pos' response was mainly related to clusters with medium and low yield levels in the baseline. Such association not apparent under RCP 2.6 and 8.5. In contrast with maize, wheat did not display—across RCPs—a consistent relation between response type and the magnitude of the change of the return period for a yield failure (supplementary S6).

4. Discussion

4.1. Significance and implications

Climate change is expected to increase yield variability and the risk of crop yield failures, representing a significant challenge to food security (Wheeler and Von Braun 2013). While crop modeling has provided insights into the expected changes in average yield levels with future climate change (Challinor *et al* 2014, Deryng *et al* 2014, Rosenzweig *et al* 2014, Schleussner *et al* 2018, Webber *et al* 2018), few studies have considered the projected shift of yield distributions and implications for yield failure frequencies (e.g. Challinor *et al* 2010, Webber *et al* 2016, Faye *et al* 2018). This is particularly relevant for many currently low income world regions at low latitudes where large negative climate impacts are projected (Rosenzweig *et al* 2014). In these regions, climate risk is linked to the extent and persistence of rural poverty, with shocks eroding productive assets of smallholder farmers, limiting investments in agriculture and the adoption of improved technologies (Hansen *et al* 2019). As climate-induced yield variability often increases with intensification (Faye *et al* 2018, Müller *et al* 2018), climate risk is likely to further constrain decisions to intensify production (Hansen *et al* 2019, Benami *et al* 2021). In the context of an increased climate-driven uncertainty, understanding what drives the changes along the yield distributions (and the implications for yield failures) will contribute to the design of improved adaptation measures, targeting the stability of crop yields (e.g. investments in irrigation infrastructure or crop breeding) and of farmers' income (e.g. subsidizing insurance products).

In this context, here we presented an approach to quantify how yield distributions and the associated risk of yield failures change using an ensemble of crop and climate models. We demonstrated the approach for Europe, where we could take advantage of an existing dataset for the case of two important cereal crops. We present and discuss the results as a demonstration of the methodology, illustrating the types of information that can be provided, including a quantification of the uncertainties. For this test case, our results highlighted a general increase in risk of yield failure for maize under climate change across Europe, particularly marked in areas characterized in

the baseline scenario by relatively high yields and a low risk of failure. The increase of the risk of yield failures was associated with a shift of the yield distribution towards lower values and changes in shape of the distribution that further reduced the frequency of high yields. The adaptation potential deriving from the adoption of later maturity hybrids appeared in this case limited, as drought stress already intensified despite the shorter crop cycle (Webber *et al* 2018). The demonstration case illustrated a different picture for wheat: the risk of yield failure generally declined under future scenarios, accompanied by a shift of the distribution towards higher values and a change in shape increasing the frequency of extreme values at both ends of the distribution. The differential patterns of risk of failure emerging for maize and wheat may inform adaptation strategies related to the regional allocation of crops (Bindi and Olesen 2011, Zimmermann *et al* 2017). The availability of simulation results from different crop and climate models provides the opportunity of quantifying the model uncertainties in the definition of the spatial clusters, in the changes in risk of yield failure and in the relative distributions. In the case study, the exploration of uncertainties revealed that while the relative distributions projected by different crop and climate models were consistent, uncertainties from crop models could hamper the identification of the sign of changes in the risk of yield failures.

While our intention is to demonstrate the risk assessment method, our results are consistent with studies looking at the drivers of yield change across Europe. The shift of wheat yield distributions towards higher values was explained by the fertilization effect of increased atmospheric CO₂ concentrations (Webber *et al* 2018). The CO₂ effect may also explain the discrepancy between the projected changes in wheat yields and the large negative impacts on wheat throughout Europe outlined by statistical models (e.g. Moore and Lobell 2014, Gammans *et al* 2017). When removing this effect, the different methods produced similar estimates of climate change impact on wheat yields (Liu *et al* 2016). In our case study, removing the CO₂ effect led to an increased frequency of low yields for wheat, particularly in the lowest deciles (results not shown).

4.2. Relative distributions: opportunities and challenges

Though empirical modeling of the yield probability distribution has been performed for economic analysis (Tack *et al* 2012, Malikov *et al* 2020, Ramsey 2020), the majority of studies assessing climate change impact studies have focused on the mean effects of climate change, providing relatively limited insight into the distributional heterogeneity in climate change effects. In this study, climate change impacts were assessed for yield distributions using the relative distribution method. In turn, changes in the

frequency of yield failure were related to changes in the distribution of yields.

The relative distribution method is suited to the analysis of changing risk under climate change, where different aspects of the yield distributions may be affected (e.g. as a result of shifts in mean and increased probability of extreme values). Moreover, as the shape of the yield distribution can be skewed and interact significantly with management factors (Day 1965), traditional parametric methods for the representation of yield distributions may introduce bias in the analysis of crop yields (Rötter *et al* 1997). The absence of parametric assumptions, conversely, makes relative distribution ideal for the analysis of crop yields. While relative distributions can quantify differences occurring at any quantile of the yield distribution, the method also allow to summarize differences into two basic components, i.e. changes in location (mean or median) and in shape (a general concept comprising higher moments of the distribution). Combined with the analyses of drivers of changes in crop yields (Webber *et al* 2018), this could quantify the influence of climate drivers on specific changes in yield distribution critical for yield failure, highlighting the causes of the risk associated with the cultivation of a crop in vulnerable areas. In this study, we focused on the joint contribution of drought and heat stress under elevated atmospheric CO₂ concentrations. However, the relative distribution could be applied to different production levels (e.g. potential, drought limited, heat limited, drought-heat limited, with and without elevated CO₂ concentrations) to gain insights in the effect of various drivers and their interaction along the entire yield distribution under climate change.

A main challenge in applying relative distributions to the analysis of crop yields is the need of large enough datasets to provide reliable estimates of the changes occurring along the entire yield distribution. To this end, in our study data from different simulation units had to be pooled, limiting the resolution of the analysis as adaptation studies must clearly be based on data at a higher spatial resolution. Nevertheless, our intention with the study was to provide a proof of concept for the use of relative distributions, showing their relevance for policy and insurance by outlining the broad patterns of changes in risk of yield failure under climate change. While not ideal due to potentially confounding effects of spatial and temporal variability, our method to define relatively homogeneous clusters with respect to yield level and drivers and the fact that, within each cluster, spatial variability had a similar influence on the reference and comparison distributions limits such problem in our study, focused on assessing how the importance of heat, CO₂ and drought influence heat and water limited yields. Such shortcomings could be avoided by using a different set of climate data as input for

the crop models. In this study, a single climate series (30 years) was used as baseline for the generation of future scenarios. A larger sampling of input data series (e.g. produced by weather generators) would make the spatial clustering unnecessary for applying the relative distributions, that could be evaluated at a disaggregate level. Ideal sets of climate data for the purpose would be the super-ensembles developed by the HAPPI project (www.happimip.org/about/), which provides bias corrected climate model outputs with a focus on global warming impacts of 1.5 °C and 2 °C increase above pre-industrial level. These data series are specifically developed for their use as input to impact models, enabling an analysis of the relative risks of low-probability extreme weather events (Mitchell *et al* 2017).

4.3. Limitations of the study

The study relies on the accuracy of crop models' estimates of yield distributions. Crop models are constructed to consider relevant yield determining factors and often further calibrated to display a consistent response to variables that are not explicitly captured in the modeled processes. Studies conducted at field scale generally make use of extensive validation to ensure crop models can explain a large portion of the observed yield variability. For applications at larger scales (e.g. regional and global studies), validation with observed data is limited by the use of aggregated yield statistics as reference values (Müller *et al* 2017, Guarin *et al* 2020) and by the uncertainties in crop management. Here, the analysis of yield anomalies across NUTS2 districts revealed a tendency of the models to overestimate baseline risk of failure across Europe (supplementary S7). This is partially expected for large scale simulations, since the specification of management, soil and varieties at an aggregate level may underrepresent the heterogeneity of the real systems that acts to buffer the effects of shocks. On the other hand, important drivers of relatively localized low yield levels related to excessive rainfall (e.g. delayed operations, poor emergence, waterlogging, disease, nitrogen leaching or harvest losses), frost damage or lodging are difficult to consider in crop models simulations intended for large area application (Ewert *et al* 2015). As a result, simulated yields when these conditions prevail is likely to be overestimated, leading in turn to an overestimation of yield variability driven by heat and drought stress. In fact, as many crop models applied in large area studies capture only weather conditions related to temperature and drought as drivers of interannual yield variability, missing other weather and management factors which act to lower yields in good years, the end result is that simulated yield variability is often overestimated. Finally, some models that did not leverage canopy temperature might have underperformed in the simulation of heat stress. However,

we opted to keep these models in the ensemble to be comparable to the study of Webber *et al* (2018). These authors reported that effects on phenology, CO₂ fertilization and drought stress had a comparatively larger effect on yield changes, justifying keeping other models to capture more process uncertainty.

The evaluation of yield failure at farm level remains challenging, since the finest scale allowed by input data (25 km resolution) provides information at an aggregate level. Due to the underlying variability of soil and weather conditions, as well as farmers' management practices, yield variability at the farm level can be significantly different than at aggregate level (Finger 2012), introducing a bias in yield risk analysis that needs to be considered in the design of adaptation measures at the aggregate level (Heimfarth *et al* 2012). Scaling also questions the appropriate threshold for assessing yield failure. A common threshold at farm level is 30% for crop failure, but the reduction of yield variability with aggregation calls for the application of a lower threshold. Quantifying the scaling errors associated with the choice of the threshold requires yield data at the farm level that were not available. However, Webber *et al* (2020b) observed that the threshold had very small effect on the identification of the years with the most widespread occurrence of failures for different crops in Germany. In this study, a relatively low threshold (15%) combined with the tendency of the models to overestimate the frequency of yield failures (supplementary S7) probably explains the high frequency of failures observed across climate scenarios.

5. Conclusions

This work aimed at providing a methodology to assess how climate change may translate into changes in risk of yield failures. Given the role of yield distributions in shaping the risk profile, the analysis of relative distributions was a cornerstone of the present work. The relative distribution methods, widely used in social sciences, were applied here for the first time in crop modeling. Relative distributions were used to study the changes occurring across the entire yield distribution under climate change, providing insights that are missed by common analyses of average shifts in crop yields. As a case study, we applied the method to assess changing patterns of the risk of yield failure expected across Europe for maize and wheat under three climate change scenarios, using published results from an ensemble of crop models. The method as applied revealed diverging patterns of changes in yield distribution under climate change for the two crops, associated with opposite responses in terms of risk of yield failure. For maize, a shift of the yield distribution towards lower yields and changes in shape of the distribution that reduced the frequency of high yields determined an increased frequency of yield

failure under climate change. Such pattern emerged especially in areas characterized by higher yields and lower frequency of yield failure, and it became widespread across Europe under higher radiative forcing scenarios. For wheat, yield failures generally declined under future scenarios, with a shift of the distribution towards higher yields and a change in shape increasing the frequency of extreme yields favored by increased CO₂ concentrations. Our test exercise revealed a number of challenges to be overcome in the future applications of the method. As the relative distributions require a larger number of yields per location than were available in the 30 year times series per simulation unit, we performed a clustering to increase our sample size, constraining the scale of the analysis to an aggregate level. Finally, for reliable risk assessments, modeling efforts need to be made to represent the effects of multiple stresses determining yield failures.

Data availability statement

The data that support the findings of this study are available upon reasonable request from the authors.

Acknowledgments

T S, H W and F E received funding from the International Wheat Yield Partnership (IWYP115 Project). H W acknowledges support from the FACCE JPI MACSUR project through the German Federal Ministry of Food and Agriculture (2815ERA01J). J E O was funded from the FACCE MACSUR project by Innovation Fund Denmark and by the SustES project—Adaptation strategies for sustainable ecosystem services and food security under adverse environmental conditions (CZ.02.1.01/0.0/0.0/16_019/0000797), which supported K C K as well. Rothamsted Research receives grant-aided support from the Biotechnology and Biological Sciences Research Council (BBSRC) through Designing Future Wheat [BB/P016855/1] and Achieving Sustainable Agricultural Systems [NE/N018125/1]. P M and L M acknowledge support from the FACCE JPI MACSUR project (031A103B) through the metaprogram Adaptation of Agriculture and Forests to Climate Change (AAFCC) of the French National Research Institute for Agriculture, Food and Environment (INRAE). F E acknowledges support from the German Federal Ministry of Food and Agriculture (BMEL) through the Federal Office for Agriculture and Food (BLE), (2851ERA01J) for FACCE MACSUR, the German Research Foundation under Germany's Excellence Strategy, EXC-2070—390732324—PhenoRob.

ORCID iDs

- Tommaso Stella  <https://orcid.org/0000-0002-3018-6585>
- Heidi Webber  <https://orcid.org/0000-0001-8301-5424>
- Alex C Ruane  <https://orcid.org/0000-0002-5582-9217>
- Stefan Fronzek  <https://orcid.org/0000-0003-2478-8050>
- Pierre Martre  <https://orcid.org/0000-0002-7419-6558>
- Claas Nendel  <https://orcid.org/0000-0001-7608-9097>
- Mikhail A Semenov  <https://orcid.org/0000-0002-1561-7113>

References

- Ben-Ari T, Boé J, Ciaï P, Lecerf R, Van Der Velde M and Makowski D 2018 Causes and implications of the unforeseen 2016 extreme yield loss in the breadbasket of France *Nat. Commun.* **9** 1627
- Benami E, Jin Z, Carter M R, Ghosh A, Hijmans R J, Hobbs A, Kenduywo B and Lobell D B 2021 Uniting remote sensing, crop modelling and economics for agricultural risk management *Nat. Rev. Earth Environ.* **2** 1–20
- Bindi M and Olesen J E 2011 The responses of agriculture in Europe to climate change *Reg. Environ. Change* **11** 151–8
- Challinor A J, Adger W N, Benton T G, Conway D, Joshi M and Frame D 2018 Transmission of climate risks across sectors and borders *Phil. Trans. R. Soc. A* **376** 20170301
- Challinor A J, Simelton E S, Fraser E D G, Hemming D and Collins M 2010 Increased crop failure due to climate change: assessing adaptation options using models and socio-economic data for wheat in China *Environ. Res. Lett.* **5** 034012
- Challinor A J, Watson J, Lobell D B, Howden S M, Smith D R and Chhetri N 2014 A meta-analysis of crop yield under climate change and adaptation *Nat. Clim. Change* **4** 287–91
- Chatzopoulos T, Dominguez I, Zampieri M and Toreti A 2020 Climate extremes and agricultural commodity markets: a global economic analysis of regionally simulated events *Weather Clim. Extremes* **27** 100193
- Coumou D and Robinson A 2013 Historic and future increase in the global land area affected by monthly heat extremes *Environ. Res. Lett.* **8** 034018
- Day R H 1965 Probability distributions of field crop yields *J. Farm Econ.* **47** 713–41
- Deryng D, Conway D, Ramankutty N, Price J and Warren R 2014 Global crop yield response to extreme heat stress under multiple climate change futures *Environ. Res. Lett.* **9** 034011
- EC 2017 Risk management schemes in EU agriculture: dealing with risk and volatility *EU Agricultural Markets Briefs* (available at: https://ec.europa.eu/info/sites/default/files/food-farming-fisheries/trade/documents/agri-market-brief-12_en.pdf (Accessed 21 September 2021))
- EC 2018 *Using Insurance in Adaptation to Climate Change* (Luxembourg: Publications Office of the European Union) (<https://doi.org/10.2834/036674>)
- Ewert F et al 2015 Crop modelling for integrated assessment of risk to food production from climate change *Environ. Model. Softw.* **72** 287–303
- FAO 2019 *Climate Change Impacts and Responses in Small-scale Irrigation Systems in West Africa: Case Studies in Cote d'Ivoire, the Gambia, Mali and Niger* (Rome: FAO)
- Faye B et al 2018 Impacts of 1.5 versus 2.0 C on cereal yields in the West African Sudan Savanna *Environ. Res. Lett.* **13** 034014
- Feng S, Hao Z, Zhang X and Hao F 2019 Probabilistic evaluation of the impact of compound dry-hot events on global maize yields *Sci. Total Environ.* **689** 1228–34
- Field C B 2012 *Managing the Risks of Extreme Events and Disasters to Advance Climate Change Adaptation: Special Report of the Intergovernmental Panel on Climate Change* (Cambridge: Cambridge University Press)
- Finger R 2012 Biases in farm-level yield risk analysis due to data aggregation *Ger. J. Agric. Econ.* **61** 30–43
- Gammans M, Mérel P and Ortiz-Bobea A 2017 Negative impacts of climate change on cereal yields: statistical evidence from France *Environ. Res. Lett.* **12** 054007
- Grillakis M G 2019 Increase in severe and extreme soil moisture droughts for Europe under climate change *Sci. Total Environ.* **660** 1245–55
- Guarín J R, Asseng S, Martre P and Bliznyuk N 2020 Testing a crop model with extreme low yields from historical district records *Field Crops Res.* **249** 107269
- Handcock M S 2016 Relative distribution methods. Version 1.6-6. Project home page (available at: www.stat.ucla.edu/~handcock/RelDisthttps://CRAN.R-project.org/package=reldist (Accessed 21 September 2021))
- Handcock M S and Morris M 1998 Relative distribution methods *Sociol. Methodol.* **28** 53–97
- Handcock M S and Morris M 1999 *Relative Distribution Methods in the Social Sciences* (Berlin: Springer)
- Hansen J, Hellin J, Rosenstock T, Fisher E, Cairns J, Stirling C, Lamanna C, Van Etten J, Rose A and Campbell B 2019 Climate risk management and rural poverty reduction *Agric. Syst.* **172** 28–46
- Heimfarth L E, Finger R and Musshoff O 2012 Hedging weather risk on aggregated and individual farm-level *Agric. Finance Rev.* **72** 471–87
- Kahiluoto H et al 2019 Genetic response diversity to provide yield stability of cultivar groups deserve attention *Proc. Natl Acad. Sci.* **116** 10627–9
- Kassie B, Van Ittersum M, Hengsdijk H, Asseng S, Wolf J and Rötter R 2014 Climate-induced yield variability and yield gaps of maize (*Zea mays L.*) in the Central Rift Valley of Ethiopia *Field Crops Res.* **160** 41–53
- Kimura S, Antón J and LeThi C 2010 Farm level analysis of risk and risk management strategies and policies: cross country analysis *OECD Food, Agriculture and Fisheries Working Papers, No. 26* (OECD Publishing) (<https://doi.org/10.1787/5kmd6b5r15kd-en>)
- Lelieveld J, Proestos Y, Hadjinicolaou P, Tanarhte M, Tyrllis E and Zittis G 2016 Strongly increasing heat extremes in the Middle East and North Africa (MENA) in the 21st century *Clim. Change* **137** 245–60
- Leng G 2017 Recent changes in county-level corn yield variability in the United States from observations and crop models *Science of The Total Environment* **607–608** 683–90
- Liu B et al 2016 Similar estimates of temperature impacts on global wheat yield by three independent methods *Nat. Clim. Change* **6** 1130–6
- Lobell D B and Asseng S 2017 Comparing estimates of climate change impacts from process-based and statistical crop models *Environ. Res. Lett.* **12** 015001
- Malikov E, Miao R and Zhang J 2020 Distributional and temporal heterogeneity in the climate change effects on US agriculture *J. Environ. Econ. Manage.* **104** 102386
- Metzger M J, Bunce R G H, Jongman R H, Múcher C A and Watkins J W 2005 A climatic stratification of the environment of Europe *Glob. Ecol. Biogeogr.* **14** 549–63
- Mitchell D et al 2017 Half a degree additional warming, prognosis and projected impacts (HAPPI): background and experimental design *Geosci. Model Dev.* **10** 571–83
- Moore F C and Lobell D B 2014 Adaptation potential of European agriculture in response to climate change *Nat. Clim. Change* **4** 610–4

- Müller C *et al* 2017 Global gridded crop model evaluation: benchmarking, skills, deficiencies and implications *Geosci. Model Dev.* **10** 1403–22
- Müller C *et al* 2018 Global patterns of crop yield stability under additional nutrient and water inputs *PLoS One* **13** e0198748
- Porter J R and Semenov M A 2005 Crop responses to climatic variation *Phil. Trans. R. Soc. B* **360** 2021–35
- Porter J R, Xie L, Challinor A J, Cochrane K, Howden S M, Iqbal M M, Lobell D B and Travasso M I 2014 Food security and food production systems *Climate Change 2014: Impacts, Adaptation, and Vulnerability* ed Field C B *et al* Part A: Global and Sectoral Aspects. Contribution of Working Group II to the Fifth Assessment Report of the Intergovernmental Panel on Climate Change (Cambridge: Cambridge University Press) pp 485–533
- Portmann F T, Siebert S and Döll P 2010 MIRCA2000—Global monthly irrigated and rainfed crop areas around the year 2000: a new high-resolution data set for agricultural and hydrological modeling *Glob. Biogeochem. Cycles* **24**
- R Core Team 2019 R: a language and environment for statistical computing (Vienna: R Foundation for Statistical Computing) (available at: www.R-project.org/)
- Ramsey A F 2020 Probability distributions of crop yields: a bayesian spatial quantile regression approach *Am. J. Agric. Econ.* **102** 220–39
- Ray D K, Gerber J S, MacDonald G K and West P C 2015 Climate variation explains a third of global crop yield variability *Nat. Commun.* **6** 1–9
- Ray D K, West P C, Clark M, Gerber J S, Prishchepov A V, Chatterjee S and Jung Y H 2019 Climate change has likely already affected global food production *PLoS One* **14** e0217148
- Ribeiro A F S, Russo A, Gouveia C M, Páscoa P and Zscheischler J 2020 Risk of crop failure due to compound dry and hot extremes estimated with nested copulas *Biogeosciences* **17** 4815–30
- Rosenzweig C *et al* 2014 Assessing agricultural risks of climate change in the 21st century in a global gridded crop model intercomparison *Proc. Natl Acad. Sci.* **111** 3268–73
- Rötter R, Van Keulen H and Jansen M J W 1997 Variations in yield response to fertilizer application in the tropics: i. Quantifying risks and opportunities for smallholders based on crop growth simulation *Agric. Syst.* **53** 41–68
- Schewe J *et al* 2019 State-of-the-art global models underestimate impacts from climate extremes *Nat. Commun.* **10** 1–14
- Schleussner C-F *et al* 2018 Crop productivity changes in 1.5 C and 2 C worlds under climate sensitivity uncertainty *Environ. Res. Lett.* **13** 064007
- Suzuki R, Terada Y and Shimodaira H 2019 pvclust: hierarchical clustering with P-values via multiscale bootstrap resampling. R package version 2.2-0 (available at: <https://CRAN.R-project.org/package=pvclust> (Accessed 21 September 2021))
- Tack J, Harri A and Coble K 2012 More than mean effects: modeling the effect of climate on the higher order moments of crop yields *Am. J. Agric. Econ.* **94** 1037–54
- Tao F *et al* 2017 Designing future barley ideotypes using a crop model ensemble *Eur. J. Agron.* **82** 144–62
- Toreti A, Cronie O and Zampieri M 2019 Concurrent climate extremes in the key wheat producing regions of the world *Sci. Rep.* **9** 5493
- Trnka M *et al* 2019 Mitigation efforts will not fully alleviate the increase in water scarcity occurrence probability in wheat-producing areas *Sci. Adv.* **5** eaau2406
- Webber H *et al* 2018 Diverging importance of drought stress for maize and winter wheat in Europe *Nat. Commun.* **9** 4249
- Webber H *et al* 2020a Pan-European multi-crop model ensemble projections of climate change impact on wheat and grain maize *Open Data J. Agric. Res.* **6** 19–26
- Webber H, Gaiser T, Oomen R, Teixeira E, Zhao G, Wallach D, Zimmermann A and Ewert F 2016 Uncertainty in future irrigation water demand and risk of crop failure for maize in Europe *Environ. Res. Lett.* **11** 074007
- Webber H, Lischeid G, Sommer M, Finger R, Nendel C, Gaiser T and Ewert F 2020b No perfect storm for crop yield failure in Germany *Environ. Res. Lett.* **15** 104012
- Webber H, Zhao G, Wolf J, Britz W, De Vries W, Gaiser T, Hoffmann H and Ewert F 2015 Climate change impacts on European crop yields: do we need to consider nitrogen limitation? *Eur. J. Agron.* **71** 123–34
- Wheeler T and Von Braun J 2013 Climate change impacts on global food security *Science* **341** 508–13
- Xu C, McDowell N G, Fisher R A, Wei L, Sevanto S, Christoffersen B O, Weng E and Middleton R S 2019 Increasing impacts of extreme droughts on vegetation productivity under climate change *Nat. Clim. Change* **9** 948–53
- Zhao G, Webber H, Hoffmann H, Wolf J, Siebert S and Ewert F 2015 The implication of irrigation in climate change impact assessment: a European wide study *Glob. Change Biol.* **21** 4031–48
- Zimmermann A, Webber H, Zhao G, Ewert F, Kros J, Wolf J, Britz W and De Vries W 2017 Climate change impacts on crop yields, land use and environment in response to crop sowing dates and thermal time requirements *Agric. Syst.* **157** 81–92
- Zou X, Li Y, Cremades R, Gao Q, Wan Y and Qin X 2013 Cost-effectiveness analysis of water-saving irrigation technologies based on climate change response: a case study of China *Agric. Water Manage.* **129** 9–20
- Zscheischler J *et al* 2018 Future climate risk from compound events *Nat. Clim. Change* **8** 469–77