



US 20090019559A1

(19) **United States**(12) **Patent Application Publication**
Napier et al.(10) **Pub. No.: US 2009/0019559 A1**(43) **Pub. Date: Jan. 15, 2009**(54) **NUCLEIC ACID**(75) Inventors: **Johnathan A. Napier**,
Hertfordshire (GB); **Olga**
Sayanova, St. Albans (GB);
Monica Venegas Caleron, Herts
(GB)Correspondence Address:
CONNOLLY BOVE LODGE & HUTZ, LLP
P O BOX 2207
WILMINGTON, DE 19899 (US)(73) Assignee: **BASF Plant Science GmbH**,
Ludwigshafen (DE)(21) Appl. No.: **12/279,560**(22) PCT Filed: **Feb. 13, 2007**(86) PCT No.: **PCT/GB2007/000491**

§ 371 (c)(1),

(2), (4) Date: **Aug. 15, 2008**(30) **Foreign Application Priority Data**

Feb. 16, 2006 (GB) 0603160.3

Publication Classification(51) **Int. Cl.****C12N 15/85** (2006.01)**C12N 15/54** (2006.01)**A01K 67/027** (2006.01)**A01H 5/00** (2006.01)**C12N 1/00** (2006.01)**C12N 15/74** (2006.01)**C12N 15/82** (2006.01)(52) **U.S. Cl. 800/13; 435/320.1; 536/23.2; 800/298;**
435/243; 435/471; 800/281(57) **ABSTRACT**The invention relates to nucleic acid derived from *Perkinsus marinus* which encodes a 9-elongase, a $\Delta 8$ -desaturase and a $\Delta 5$ -desaturase enzyme. All of the coding sequences can be transcribed as a single transcript.

Various synthetic pathways for the biosynthesis of DHA (docosahexaenoic acid).

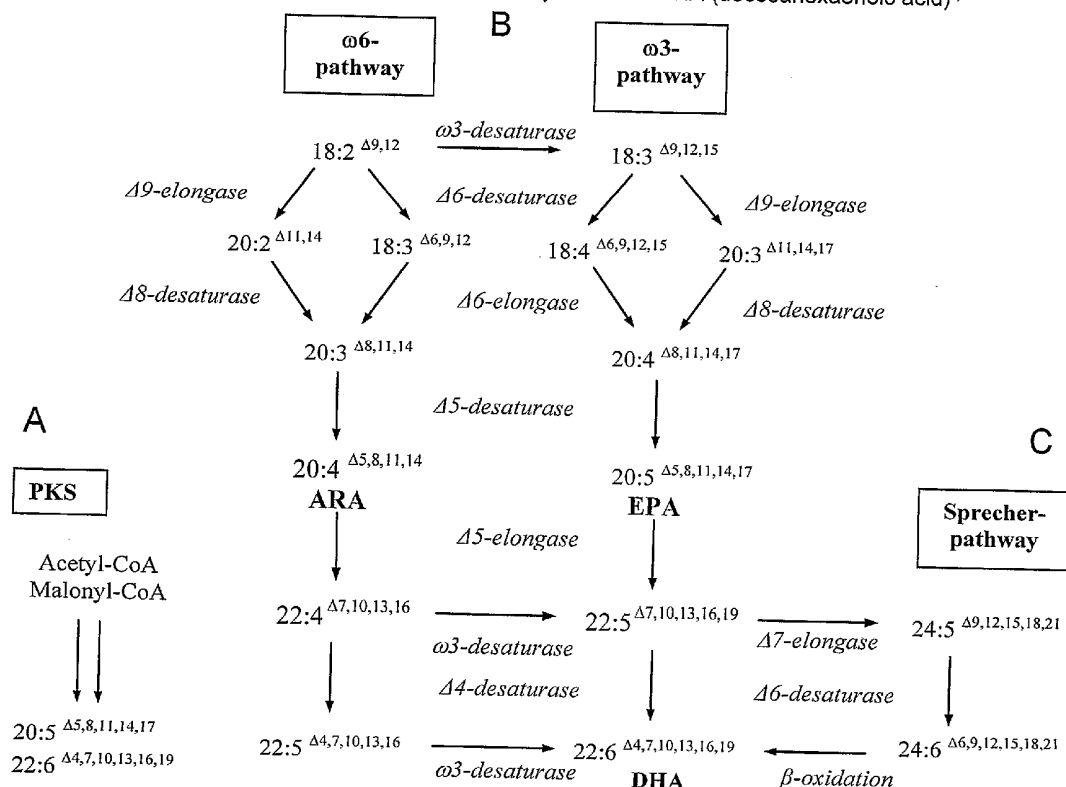


FIG. 1

Various synthetic pathways for the biosynthesis of DHA (docosahexaenoic acid)

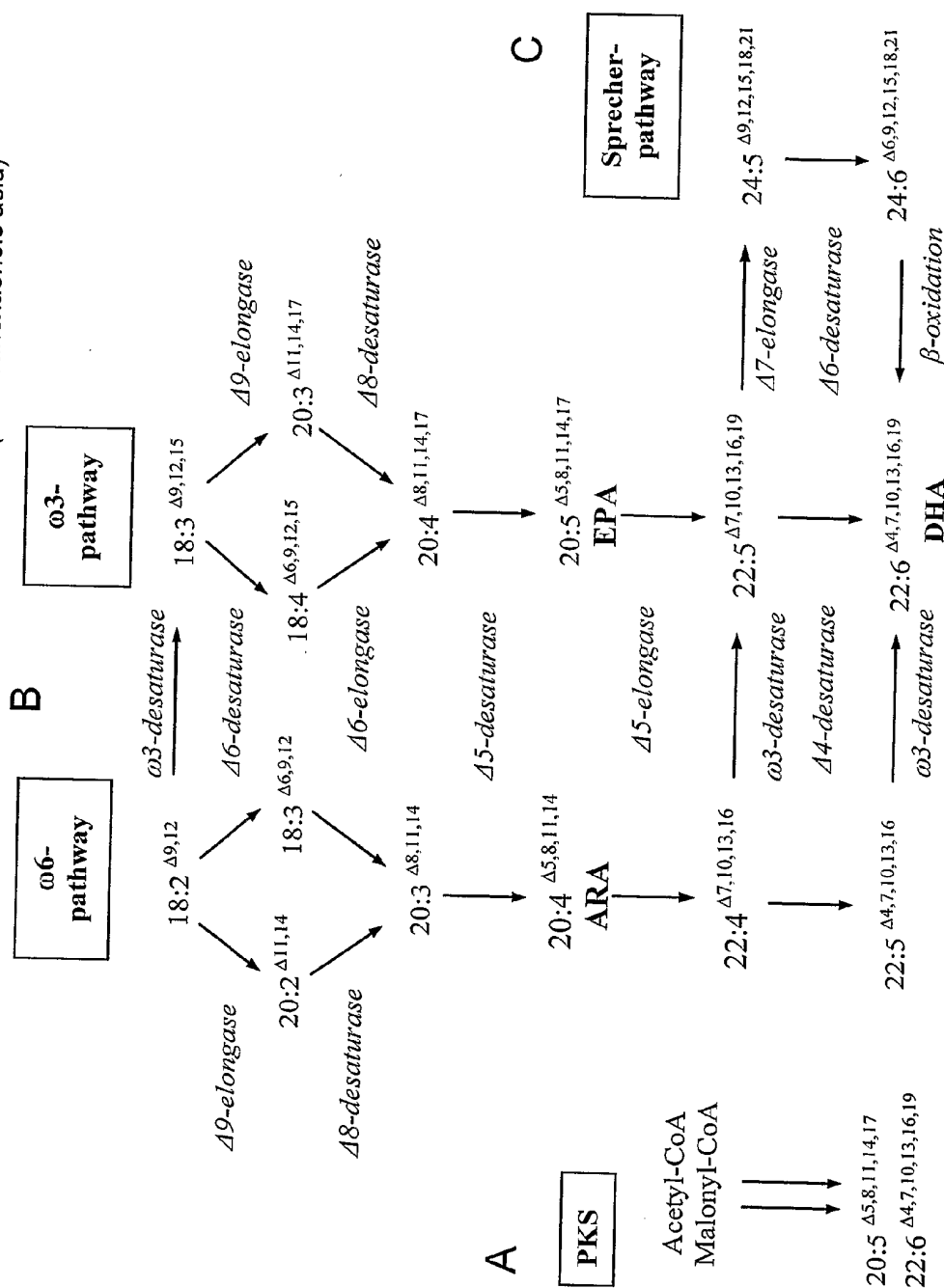
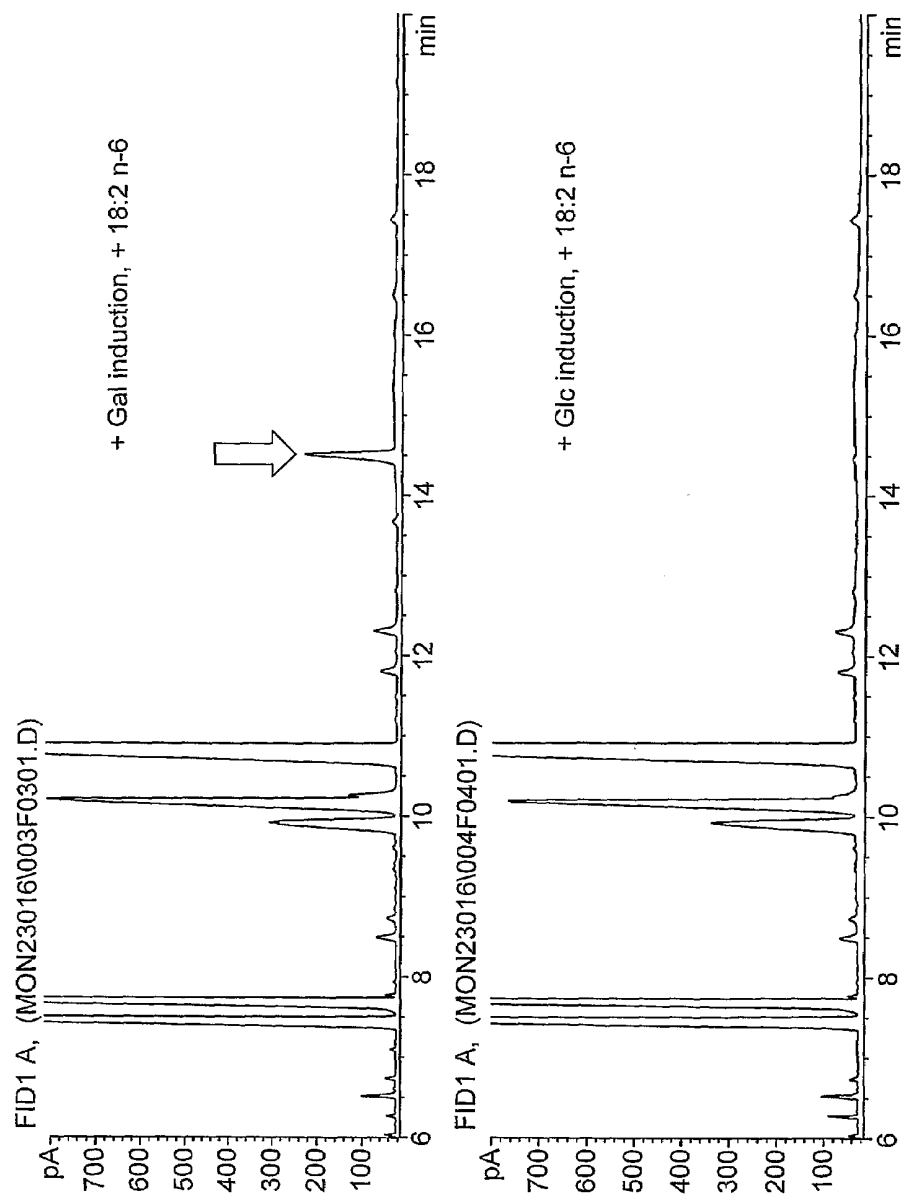


FIG. 2

Conversion of 18:2 n-6 to 20:2 n-6 by heterologous expression of the *P. marinus* sequence PmFAE in yeast



NUCLEIC ACID

[0001] The present invention relates to nucleic acid derived from *Perkinsus marinus* which encodes a 9-elongase, $\Delta 8$ -desaturase and a $\Delta 5$ -desaturase enzyme. All of the coding sequences can be transcribed as a single transcript, which simplifies the process of transforming cells required to express all three proteins. The invention also relates to the individual coding sequences and to proteins encoded by these sequences as well as to a process for converting linoleic acid to arachidonic acid.

[0002] Fatty acids and triacylglycerides have a multiplicity of applications in the food industry, in animal nutrition, in cosmetics and in the pharmacological sector. Depending on whether they are free saturated or unsaturated fatty acids or else triacylglycerides with an elevated content of saturated or unsaturated fatty acids, they are suitable for very different applications. Polyunsaturated fatty acids such as linoleic acid and linolenic acid are essential for mammals, since they cannot be produced by the latter.

[0003] Polyunsaturated $\omega 3$ -fatty acids and $\omega 6$ -fatty acids are therefore an important constituent in animal and human nutrition.

[0004] Hereinbelow, polyunsaturated fatty acids are referred to as PUFA, PUFAs, LCPUFA or LCPUFAs (poly unsaturated fatty acids, PUFA, long chain poly unsaturated fatty acids, LCPUFA).

[0005] The various fatty acids and triglycerides are mainly obtained from microorganisms such as *Mortierella* and *Schizochytrium* or from oil-producing plants such as soybean, oilseed rape, algae such as *Cryptocodinium* or *Phaeodactylum* and others, where they are obtained, as a rule, in the form of their triacylglycerides (=triglycerides=triglycerols). However, they can also be obtained from animals, such as, for example, fish. The free fatty acids are advantageously prepared by hydrolysis. Very long-chain polyunsaturated fatty acids such as docosahexaenoic acid (=DHA, C22:6^{A4,7,10,13,16,19}), eicosapentaenoic acid (=EPA, C20:5^{A5,8,11,14,17}), arachidonic acid (=ARA, C20:4^{A5,8,11,14}), dihomo- γ -linolenic acid (C20:3^{A8,11,14}) or docosapentaenoic acid (DPA, C22:5^{A7,10,13,16,19}) are not synthesized in oil crops such as oilseed rape, soybean, sunflower or safflower. Conventional natural sources of these fatty acids are fish such as herring, salmon, sardine, redfish, eel, carp, trout, halibut, mackerel, zander or tuna, or algae.

[0006] Depending on the intended use, oils with saturated or unsaturated fatty acids are preferred. In human nutrition, for example, lipids with unsaturated fatty acids, specifically polyunsaturated fatty acids, are preferred. The polyunsaturated $\omega 3$ -fatty acids are said to have a positive effect on the cholesterol level in the blood and thus on the possibility of preventing heart disease. The risk of heart disease, stroke or hypertension can be reduced markedly by adding these $\omega 3$ -fatty acids to the food. Also, $\omega 3$ -fatty acids have a positive effect on inflammatory, specifically on chronically inflammatory, processes in association with immunological diseases such as rheumatoid arthritis. They are therefore added to foodstuffs, specifically to dietetic foodstuffs, or are employed in medicaments. $\omega 6$ -Fatty acids such as arachidonic acid tend to have a negative effect on these disorders in connection with these rheumatic diseases on account of our usual dietary intake.

[0007] $\omega 3$ - and $\omega 6$ -fatty acids are precursors of tissue hormones, known as eicosanoids, such as the prostaglandins, which are derived from dihomo- γ -linolenic acid, arachidonic acid and eicosapentaenoic acid, and of the thromboxanes and leukotrienes, which are derived from arachidonic acid and eicosapentaenoic acid. Eicosanoids (known as the PG₂ series) which are formed from $\omega 6$ -fatty acids generally promote inflammatory reactions, while eicosanoids (known as the PG₃ series) from $\omega 3$ -fatty acids have little or no proinflammatory effect.

[0008] Owing to the positive characteristics of the polyunsaturated fatty acids, there has been no lack of attempts in the past to make available genes which are involved in the synthesis of these fatty acids or triglycerides for the production of oils in various organisms with a modified content of unsaturated fatty acids. Thus, WO 91/13972 and its US equivalent describes a $\Delta 9$ -desaturase. WO 93/11245 claims a $\Delta 15$ -desaturase and WO 94/11516 a $\Delta 12$ -desaturase. Further desaturases are described, for example, in EP-A-0 550 162, WO 94/18337, WO 97/30582, WO 97/21340, WO 95/18222, EP-A-0 794 250, Stukey et al., J. Biol. Chem., 265, 1990: 20144-20149, Wada et al., Nature 347, 1990: 200-203 or Huang et al., Lipids 34, 1999: 649-659. However, the biochemical characterization of the various desaturases has been insufficient to date since the enzymes, being membrane-bound proteins, present great difficulty in their isolation and characterization (McKeon et al., Methods in Enzymol. 71, 1981: 12141-12147, Wang et al., Plant Physiol. Biochem., 26, 1988: 777-792). As a rule, membrane-bound desaturases are characterized by being introduced into a suitable organism which is subsequently analyzed for enzyme activity by analyzing the starting materials and the products. $\Delta 6$ -Desaturases are described in WO 93/06712, U.S. Pat. No. 5,614,393, U.S. Pat. No. 5,614,393, WO 96/21022, WO 00/21557 and WO 99/27111 and the application for the production of fatty acids in transgenic organisms is described in WO 98/46763, WO 98/46764 and WO 98/46765. In this context, the expression of various desaturases and the formation of polyunsaturated fatty acids is also described and claimed in WO 99/64616 or WO 98/46776. As regards the expression efficacy of desaturases and its effect on the formation of polyunsaturated fatty acids, it must be noted that the expression of a single desaturase as described to date has only resulted in low contents of unsaturated fatty acids/lipids such as, for example, γ -linolenic acid and stearidonic acid. Moreover, a mixture of $\omega 3$ - and $\omega 6$ -fatty acids was obtained, as a rule.

[0009] Especially suitable microorganisms for the production of PUFAs are microalgae such as *Phaeodactylum tricornutum*, *Porphyridium* species, *Thraustochytrium* species, *Schizochytrium* species or *Cryptocodinium* species, ciliates such as *Stylonychia* or *Colpidium*, fungus such as *Mortierella*, *Entomophthora* or *Mucor* and/or mosses such as *Physcomitrella*, *Ceratodon* and *Marchantia* (R. Vazhappilly & F. Chen (1998) Botanica Marina 41: 553-558; K. Totani & K. Oba (1987) Lipids 22: 1060-1062; M. Akimoto et al. (1998) Appl. Biochemistry and Biotechnology 73: 269-278). Strain selection has resulted in the development of a number of mutant strains of the microorganisms in question which produce a series of desirable compounds including PUFAs. However, the mutation and selection of strains with an improved production of a particular molecule such as the polyunsaturated fatty acids is a time-consuming and difficult process. This is why recombinant methods as described above are preferred whenever possible.

[0010] However, only limited amounts of the desired polyunsaturated fatty acids such as DPA, EPA or ARA can be produced with the aid of the abovementioned microorganisms, and, depending on the microorganism used, these are generally obtained as fatty acid mixtures of, for example, EPA, DPA and ARA.

[0011] A variety of synthetic pathways is being discussed for the synthesis of arachidonic acid, eicosapentaenoic acid (EPA) and docosahexaenoic acid (DHA) (FIG. 1). Thus, EPA or DHA are produced in marine bacteria such as *Vibrio* sp. or *Shewanella* sp. via the polyketide pathway (Yu, R. et al. *Lipids* 35:1061-1064, 2000; Takeyama, H. et al. *Microbiology* 143:2725-2731, 1997).

[0012] An alternative strategy is the alternating activity of desaturases and elongases (Zank, T. K. et al. *Plant Journal* 31:255-268, 2002; Sakuradani, E. et al. *Gene* 238:445-453, 1999). A modification of the above-described pathway by $\Delta 6$ -desaturase, $\Delta 6$ -elongase, $\Delta 5$ -desaturase, $\Delta 5$ -elongase and $\Delta 4$ -desaturase is the Sprecher pathway (Sprecher 2000, *Biochim. Biophys. Acta* 1486:219-231) in mammals. Instead of the $\Delta 4$ -desaturation, a further elongation step is effected here to give C_{24} , followed by a further $\Delta 6$ -desaturation and finally β -oxidation to give the C_{22} chain length. Thus what is known as Sprecher pathway (see FIG. 1) is, however, not suitable for the production in plants and microorganisms since the regulatory mechanisms are not known.

[0013] Depending on their desaturation pattern, the polyunsaturated fatty acids can be divided into two large classes, viz. $\omega 6$ - or $\omega 3$ -fatty acids, which differ with regard to their metabolic and functional activities (FIG. 1).

[0014] The starting material for the $\omega 6$ -metabolic pathway is the fatty acid linoleic acid ($18:2^{\Delta 9,12}$) while the $\omega 3$ -pathway proceeds via linolenic acid ($18:3^{\Delta 9,12,15}$). Linolenic acid is formed by the activity of an $\omega 3$ -desaturase (Tocher et al. 1998, *Prog. Lipid Res.* 37, 73-117; Domergue et al. 2002, *Eur. J. Biochem.* 269, 4105-4113).

[0015] Mammals, and thus also humans, have no corresponding desaturase activity ($\Delta 12$ - and $\omega 3$ -desaturase) and must take up these fatty acids (essential fatty acids) via the food. Starting with these precursors, the physiologically important polyunsaturated fatty acids arachidonic acid (=ARA, $20:4^{\Delta 5,8,11,14}$), an $\omega 6$ -fatty acid and the two $\omega 3$ -fatty acids eicosapentaenoic acid (=EPA, $20:5^{\Delta 5,8,11,14,17}$) and docosahexaenoic acid (DHA, $22:6^{\Delta 4,7,10,13,17,19}$) are synthesized via the sequence of desaturase and elongase reactions. The application of $\omega 3$ -fatty acids shows the therapeutic activity described above in the treatment of cardiovascular diseases (Shimikawa 2001, *World Rev. Nutr. Diet.* 88, 100-108), Entzündungen (Calder 2002, *Proc. Nutr. Soc.* 61, 345-358) and Arthritis (Cleland and James 2000, *J. Rheumatol.* 27, 2305-2307).

[0016] The elongation of fatty acids, by elongases, by 2 or 4 C atoms is of crucial importance for the production of C_{20} - and C_{22} -PUFAs, respectively. This process proceeds via 4 steps. The first step is the condensation of malonyl-CoA with the fatty-acid-acyl-CoA by ketoacyl-CoA synthase (KCS, hereinbelow referred to as elongase). This is followed by a reduction step (ketoacyl-CoA reductase, KCR), a dehydration step (dehydratase) and a final reduction step (enoyl-CoA reductase). It has been postulated that the elongase activity affects the specificity and rate of the entire process (Millar and Kunst, 1997 *Plant Journal* 12:121-131).

[0017] There have been a large number of attempts in the past to obtain elongase genes. Millar and Kunst, 1997 (*Plant*

Journal 12:121-131) and Millar et al. 1999, (*Plant Cell* 11:825-838) describe the characterization of plant elongases for the synthesis of monounsaturated long-chain fatty acids ($C_{22:1}$) and for the synthesis of very long-chain fatty acids for the formation of waxes in plants (C_{28} - C_{32}). Descriptions regarding the synthesis of arachidonic acid and EPA are found, for example, in WO0159128, WO0012720, WO02077213 and WO0208401. The synthesis of polyunsaturated C_{24} -fatty acids is described, for example, in Tvrdik et al. 2000, *JCB* 149:707-717 or WO0244320.

[0018] Higher plants comprise polyunsaturated fatty acids such as linoleic acid ($18:2^{\Delta 9,12}$) and linolenic acid ($18:3^{\Delta 9,12,15}$). ARA, EPA and DHA are found not at all in the seed oil of higher plants, or only in miniscule amounts (E. Ucciani: *Nouveau Dictionnaire des Huiles Végétales* [New Dictionary of Vegetable Oils]. Technique & Documentation—Lavoisier, 1995. ISBN: 2-7430-0009-0). However, the production of LCPUFAs in higher plants, preferably in oil crops such as oilseed rape, linseed, sunflower and soybeans, would be advantageous since large amounts of high-quality LCPUFAs for the food industry, animal nutrition and pharmaceutical purposes might be obtained economically. To this end, it is advantageous to introduce, into oil crops, genes which encode enzymes of the LCPUFA biosynthesis via recombinant methods and to express them therein. These genes may encode for example $\Delta 9$ -elongases, $\Delta 8$ -desaturases and/or $\Delta 5$ -desaturases. These genes can advantageously be isolated from microorganisms and lower plants which produce LCPUFAs and incorporate them in the membranes or triacylglycerides. Thus, it has already been possible to isolate $\Delta 6$ -desaturase genes from the moss *Physcomitrella patens* and $\Delta 6$ -elongase genes from *P. patens* and from the nematode *C. elegans*.

[0019] The first transgenic plants which comprise and express genes encoding LCPUFA biosynthesis enzymes and which, as a consequence, produce LCPUFAs were described for the first time, for example, in DE-A-102 19 203 (process for the production of polyunsaturated fatty acids in plants). However, these plants produce LCPUFAs in amounts which require further optimization for processing the oils which are present in the plants.

[0020] As can be seen from FIG. 1, products of the $\omega 6$ -pathway can be modified using appropriate desaturases and, if necessary, elongases to give $\omega 3$ fatty acids. Therefore, it would be exceedingly valuable to develop a product which makes possible the production of ARA in a genetically modified organism.

[0021] The oyster protozoan parasite *Perkinsus marinus* is capable of synthesizing saturated and unsaturated fatty acids, including the essential fatty acid, arachidonic acid [$20:4(n-6)$], via the $\Delta 8$ desaturase pathway. Surprisingly the present inventors have found that *P. marinus* contains nucleic encoding a $\Delta 9$ -elongase, a $\Delta 8$ -desaturase and a $\Delta 5$ -desaturase which can all be transcribed as a single transcript. The full length sequence is shown as SEQ ID NO: 1.

[0022] Therefore, in a first aspect of the invention, there is provided an isolated nucleic acid sequence which encodes polypeptides with $\Delta 9$ -elongase, $\Delta 8$ -desaturase and $\Delta 5$ -desaturase activity and which is selected from the group consisting of:

- a) Nucleic acid sequence comprising nucleic acid residues 7668 to 12077 of SEQ ID NO: 1 or a homolog thereof;
- b) a nucleic acid sequence which hybridizes under stringent conditions with a nucleic acid sequence comprising nucleic acid residues 7668 to 12077 of SEQ ID NO: 1;

c) an isolated nucleic acid sequence which encodes polypeptides with $\Delta 9$ -elongase, $\Delta 8$ -desaturase and $\Delta 5$ -desaturase activity, wherein the polypeptides are selected from the group consisting of SEQ ID NOS 2, 3 and 4;

d) A derivative of a nucleic acid sequence of SEQ ID NO: 1 which encodes polypeptides with at least 40% identity at the amino acid level with SEQ ID NO: 2, SEQ ID NO: 3 and SEQ ID NO: 4; wherein said polypeptides have $\Delta 9$ -elongase, $\Delta 8$ -desaturase and $\Delta 5$ -desaturase activity.

[0023] The advantage of the nucleic acid sequence of the present invention is that, although it encodes three separate enzymes, it can be transcribed as a single sequence, which makes it much simpler to prepare cloning and expression vectors expressing all three enzymes.

[0024] Preferably, the isolated nucleic acid sequence according to the invention is not identical to SEQ ID No 1 (sequence 1047306867) itself.

[0025] In the context of the present invention "hybridizes under stringent conditions" is intended to describe hybridization and washing conditions under which nucleotide sequences with at least 60% homology to one another usually remain hybridized with one another. Conditions are preferably such that sequences with at least approximately 65%, preferably at least approximately 70% and especially preferably at least 75% or more homology to one another usually remain hybridized to one another. These stringent conditions are known to the skilled worker and described, for example, in Current Protocols in Molecular Biology, John Wiley & Sons, N.Y. (1989), 6.3.1-6.3.6. A preferred nonlimiting example of stringent hybridization conditions is hybridizations in 6×sodium chloride/sodium citrate (=SSC) at approximately 45° C., followed by one or more washing steps in 0.2×SSC, 0.1% SDS at 50 to 65° C. The skilled worker knows that these hybridization conditions differ depending on the type of nucleic acid and, for example when organic solvents are present, regarding temperature and buffer concentration. Under "standard hybridization conditions", for example, the hybridization temperature is, depending on the type of nucleic acid, between 42° C. and 58° C. in aqueous buffer with a concentration of 0.1 to 5×SSC (pH 7.2). If organic solvents, for example 50% formamide, are present in the abovementioned buffer, the temperature under standard conditions is approximately 42° C. The hybridization conditions for DNA:DNA hybrids, for example, are 0.1×SSC and 20° C. to 45° C., preferably 30° C. to 45° C. The hybridization conditions for DNA:RNA hybrids are, for example, 0.1×SSC and 30° C. to 55° C., preferably 45° C. to 55° C. The abovementioned hybridization conditions are determined by way of example for a nucleic acid with approximately 100 bp (=base pairs) in length and with a G+C content of 50% in the absence of formamide. The skilled worker knows how to determine the required hybridization conditions on the basis of the abovementioned textbooks or textbooks such as Sambrook et al., "Molecular Cloning", Cold Spring Harbor Laboratory, 1989; Hames and Higgins (Ed.) 1985, "Nucleic Acids Hybridization: A Practical Approach", IRL Press at Oxford University Press, Oxford; Brown (Ed.) 1991, "Essential Molecular Biology: A Practical Approach", IRL Press at Oxford University Press, Oxford.

[0026] Furthermore, when the present specification refers to isolated nucleic acid molecules of a nucleotide sequence which hybridize with one of the nucleotide sequences shown in SEQ ID NO: 1, SEQ ID NO: 3 or with a part thereof under stringent conditions, "a part thereof" is understood as mean-

ing, in accordance with the invention, that at least 25 base pairs (=bp), 50 bp, 75 bp, 100 bp, 125 bp or 150 bp, preferably at least 175 bp, 200 bp, 225 bp, 250 bp, 275 bp or 300 bp, especially preferably 350 bp, 400 bp, 450 bp, 500 bp or more base pairs are used for the hybridization.

[0027] In the context of the present invention "Homologs" of the nucleic acid sequence with the sequence SEQ ID NO: 1 means, for example, allelic variants with at least approximately 50 or 60%, preferably at least approximately 60 or 70%, more preferably at least approximately 70 or 80%, 90% or 95% and even more preferably at least approximately 85%, 86%, 87%, 88%, 89%, 90%, 91%, 92%, 93%, 94%, 95%, 96%, 97%, 98%, 99% or more identity or homology with a nucleotide sequence shown in SEQ ID NO: 1.

[0028] "Allelic variants" comprise in particular functional variants which can be obtained by deletion, insertion or substitution of nucleotides from/into the sequence, it being intended, however, that the enzyme activity of the resulting proteins which are synthesized is advantageously retained for the insertion of one or more genes.

[0029] "Homologs" also means bacterial, fungal and plant homologs, truncated sequences, single-stranded DNA or RNA of the coding and noncoding DNA sequence and derivatives such as, for example, promoter variants. The promoters upstream of the nucleotide sequences detailed can be modified by one or more nucleotide exchanges, by insertion(s) and/or deletion(s) without the functionality or activity of the promoters being adversely affected, however. It is furthermore possible that the modification of the promoter sequence enhances their activity or that they are replaced entirely by more active promoters, including those from heterologous organisms.

[0030] In order to determine the percentage of homology (=identity) of two amino acid sequences, the sequences are written one under the other for an optimal comparison (for example, gaps may be introduced into the sequence of a protein or of a nucleic acid in order to generate an optimal alignment with the other protein or the other nucleic acid). Then, the amino acid residue or nucleotides at the corresponding amino acid positions or nucleotide positions are compared. If a position in a sequence is occupied by the same amino acid residue or the same nucleotide as the corresponding position in the other sequence, then the molecules are homologous at this position (i.e. amino acid or nucleic acid "homology" as used in the present context corresponds to amino acid or nucleic acid "identity"). The percentage of homology between the two sequences is a function of the number of positions which the sequences share (i.e. % homology=number of identical positions/total number of positions×100). The terms homology and identity are therefore to be considered as synonymous.

[0031] The homology was calculated over the entire amino acid or nucleic acid sequence region. The skilled worker has available a series of programs which are based on various algorithms for the comparison of various sequences. Here, the algorithms of Needleman and Wunsch or Smith and Waterman give particularly reliable results. The program PileUp (J. Mol. Evolution., 25, 351-360, 1987, Higgins et al., CABIOS, 5 1989: 151-153) or the programs Gap and BestFit [Needleman and Wunsch (J. Mol. Biol. 48: 443-453 (1970) and Smith and Waterman (Adv. Appl. Math. 2: 482-489 (1981))], which are part of the GCG software packet [Genetics Computer Group, 575 Science Drive, Madison, Wis., USA 53711 (1991)], were used for the sequence alignment. The sequence

Ogy values which are indicated above as a percentage were determined over the entire sequence region using the program GAP and the following settings: Gap Weight: 50, Length Weight: 3, Average Match: 10.000 and Average Mismatch: 0.000. Unless otherwise specified, these settings were always used as standard settings for the sequence alignments.

[0032] In the context of the present invention "Δ9-elongase, Δ8-desaturase and Δ5-desaturase activity" is understood as meaning that a protein encoded by a derivative of SEQ ID NO: 1 or nucleic acid residues 7668 to 12077 of SEQ ID NO: 1 retains an enzymatic activity of at least 10%, preferably 20%, especially preferably 30% and very especially 40% in comparison with the proteins/enzymes encoded by the sequence SEQ ID NO: 1 or nucleic acid residues 7668 to 12077 of SEQ ID NO: 1 and can thus catalyse the conversion of linoleic acid to arachidonic acid.

[0033] Although it is often extremely useful to transcribe nucleic acid encoding polypeptides with Δ9-elongase, Δ8-desaturase and Δ5-desaturase activity as a single sequence, there may be some circumstances in which it is preferable to make use of nucleic acid encoding a single enzyme, i.e. a Δ9-elongase, a Δ8-desaturase or a Δ5-desaturase.

[0034] Therefore, in a second aspect of the invention there is provided an isolated nucleic acid sequence which encodes a polypeptide with Δ9-elongase activity and which is selected from the group consisting of:

- a) a sequence comprising nucleic acid residues 7668 to 9200 of SEQ ID NO: 1, SEQ ID NO: 9 or a homolog of one of these;
- b) nucleic acid sequences which hybridize under stringent conditions with a nucleic acid sequence comprising residues 7668 to 9200 of SEQ ID NO: 1 or SEQ ID NO: 9;
- c) an isolated nucleic acid sequence which encodes polypeptides with Δ9-elongase, activity, wherein the polypeptide comprises SEQ ID NO: 2 or SEQ ID NO: 10;
- d) A derivative of a a sequence comprising nucleic acid residues 7668 to 9200 of SEQ ID NO: 1 or SEQ ID NO: 9, which encodes a polypeptide with at least 40% identity at the amino acid level with SEQ ID NO: 2 or SEQ ID NO: 10; wherein said polypeptide has Δ9-elongase activity.

[0035] In a third aspect of the invention, there is provided an isolated nucleic acid sequence which encodes a polypeptide with Δ8-desaturase activity and which is selected from the group consisting of:

- a) a sequence comprising nucleic acid residues 9351 to 10724 of SEQ ID NO: 1 or a homolog thereof;
- b) nucleic acid sequences which hybridize under stringent conditions with a nucleic acid sequence comprising residues 9351 to 10724 of SEQ ID NO: 1;
- c) an isolated nucleic acid sequence which encodes polypeptides with Δ8-desaturase activity, wherein the polypeptide comprises SEQ ID NO: 3;
- d) A derivative of a a sequence comprising nucleic acid residues 9351 to 10724 of SEQ ID NO: 1 which encodes a polypeptide with at least 40% identity at the amino acid level with SEQ ID NO: 3; wherein said polypeptide has Δ8-desaturase activity.

[0036] In a fourth aspect of the invention, there is provided an isolated nucleic acid sequence which encodes a polypeptide with Δ5-desaturase activity and which is selected from the group consisting of:

- a) a sequence comprising nucleic acid residues 10842 to 12077 of SEQ ID NO: 1 or a homolog thereof;

- b) nucleic acid sequences which hybridize under stringent conditions with a nucleic acid sequence comprising residues 10842 to 12077 of SEQ ID NO: 1;

- c) an isolated nucleic acid sequence which encodes polypeptides with Δ5-desaturase activity, wherein the polypeptide comprises SEQ ID NO: 4;

- d) A derivative of a a sequence comprising nucleic acid residues 10842 to 12077 of SEQ ID NO: 1 which encodes a polypeptide with at least 40% identity at the amino acid level with SEQ ID NO: 4; wherein said polypeptide has Δ5-desaturase activity.

[0037] In still another aspect of the invention there is provided a polypeptide which is encoded by a nucleic acid sequence of any of the first to fourth aspects of the invention.

[0038] Advantageously, the polypeptide encoded by these nucleic acid molecules have at least approximately 50%, preferably at least approximately 60% and more preferably at least approximately 70%, 80% or 90% and most preferably at least approximately 85%, 86%, 87%, 88%, 89%, 90%, 91%, 92%, 93%, 94%, 95%, 96%, 97%, 98%, 99% or more identity with the amino acid sequences shown in SEQ ID NO: 2, SEQ ID NO: 3, SEQ ID NO: 4 or SEQ ID NO: 9.

[0039] The nucleic acid sequences used in the process are advantageously introduced into an expression cassette which makes possible the expression of the nucleic acids in organisms such as microorganisms or plants.

[0040] Therefore, in another aspect of the invention there is provided a gene construct comprising a nucleic acid sequence which encodes one or more polypeptides with Δ9-elongase, Δ8-desaturase and/or Δ5-desaturase activity as set out above, operably linked with one or more regulatory sequences.

[0041] In the expression cassette, the nucleic acid sequence which encodes Δ9-elongase, Δ8-desaturase and/or Δ5-desaturase, is linked operably with one or more regulatory sequences, advantageously for enhancing gene expression. These regulatory sequences are intended to make possible the specific expression of the genes and proteins. Depending on the host organism, this may mean, for example, that the gene is expressed and/or overexpressed only after induction has taken place, or else that it is expressed and/or overexpressed immediately. For example, these regulatory sequences take the form of sequences to which inducers or repressors bind, thus controlling the expression of the nucleic acid. In addition to these novel regulatory sequences, or instead of these sequences, the natural regulatory elements of these sequences may still be present before the actual structural genes and, if appropriate, may have been genetically modified in such a way that their natural regulation is eliminated and the expression of the genes is enhanced. However, the expression cassette (=expression construct= gene construct) can also be simpler in construction, that is to say no additional regulatory signals have been inserted before the nucleic acid sequence or its derivatives, and the natural promoter together with its regulation was not removed. Instead, the natural regulatory sequence has been mutated in such a way that regulation no longer takes place and/or gene expression is enhanced. These modified promoters can also be positioned on their own before the natural gene in the form of part-sequences (=promotor with parts of the nucleic acid sequences used in accordance with the invention) in order to enhance the activity. Moreover, the gene construct may advantageously also comprise one or more what are known as enhancer sequences in operable linkage with the promoter, which make possible an enhanced expression of the nucleic acid sequence.

[0042] Additional advantageous sequences, such as further regulatory elements or terminator sequences, may also be inserted at the 3' end of the DNA sequences. One or more sequences encoding enzymes which catalyse the conversion of ARA to an ω 3-unsaturated fatty acid such as EPA or DHA may also be present. Thus, for example, sequences encoding a Δ 5-elongase, ω 3-desaturase and/or Δ 4-desaturase, may be present in one or more copies of the expression cassette (=gene construct). Preferably, only one copy of the genes is present in each expression cassette. This gene construct or the gene constructs can be expressed together in the host organism. In this context, the gene construct(s) can be inserted in one or more vectors and be present in the cell in free form, or else be inserted in the genome. It is advantageous for the insertion of further genes in the genome when the genes to be expressed are present together in one gene construct.

[0043] In this context, the regulatory sequences or factors can, as described above, preferably have a positive effect on the gene expression of the genes introduced, thus enhancing it. Thus, an enhancement of the regulatory elements, advantageously at the transcriptional level, may take place by using strong transcription signals such as promoters and/or enhancers. In addition, however, enhanced translation is also possible, for example by improving the stability of the mRNA.

[0044] The regulatory sequences include, in particular, plant sequences such as promoter and terminator sequences. The constructs can advantageously be stably propagated in microorganisms, in particular in *E. coli* and *Agrobacterium tumefaciens*, under selective conditions and make possible the transfer of heterologous DNA into plants or microorganisms.

[0045] Useful regulatory sequences are present, for example, in promoters such as the cos, tac, trp, tet, trp-tet, lpp, lac, lpp-lac, lacIq, T7, T5, T3, gal, trc, ara, SP6, λ -PR or λ -PL promoter and are advantageously employed in Gram-negative bacteria. Further advantageous regulatory sequences are, for example, present in the Gram-positive promoters amy and SPO2, in the yeast or fungal promoters ADC1, MF α , AC, P-60, CYC1, GAPDH, TEF, rp28, ADH or in the plant promoters CaMV/35S [Franck et al., Cell 21 (1980) 285-294], PRP1 [Ward et al., Plant. Mol. Biol. 22 (1993)], SSU, OCS, lib4, usp, STLS1, B33, nos or in the ubiquitin or phaseolin promoter. Advantageous in this context are also inducible promoters, such as the promoters described in EP-A-0 388 186 (benzenesulfonamide-inducible), Plant J. 2, 1992:397-404 (Gatz et al., tetracycline-inducible), EP-A-0 335 528 (abscissic acid-inducible) or WO 93/21334 (ethanol- or cyclohexenol-inducible) promoters. Further suitable plant promoters are the cytosolic FBPase promoter or the ST-LSI promoter of potato (Stockhaus et al., EMBO J. 8, 1989, 2445), the *glycine max* phosphoribosylpyrophosphate amidotransferase promoter (Genbank Accession No. U87999) or the node-specific promoter described in EP-A-0 249 676.

[0046] Especially advantageous promoters are promoters which make possible the expression in tissues which are involved in the biosynthesis of fatty acids. Very especially advantageous are seed-specific promoters, such as the USP promoter as described, but also other promoters such as the LeB4, DC3, phaseolin or napin promoter. Further especially advantageous promoters are seed-specific promoters which can be used for monocotyledonous or dicotyledonous plants and which are described in U.S. Pat. No. 5,608,152 (oilseed rape napin promoter), WO 98/45461 (*Arabidopsis oleosin* promoter), U.S. Pat. No. 5,504,200 (*Phaseolus vulgaris*

phaseolin promoter), WO 91/13980 (Brassica Bce4 promoter), by Baeumlein et al., Plant J., 2, 2, 1992:233-239 (LeB4 promoter from a legume), these promoters being suitable for dicots. Examples of promoters which are suitable for monocots are the barley lpt-2 or lpt-1 promoter (WO 95/15389 and WO 95/23230), the barley hordein promoter and other suitable promoters described in WO 99/16890.

[0047] In principle, it is possible to use all natural promoters together with their regulatory sequences, such as those mentioned above. It is also possible and advantageous to use synthetic promoters, either in addition or alone, in particular when they mediate seed-specific expression, such as those described in WO 99/16890.

[0048] In order to achieve a particularly high ARA content, especially in transgenic plants, the genes should advantageously be expressed in oil crops in a seed-specific manner. To this end, seed-specific promoters can be used, or those promoters which are active in the embryo and/or in the endosperm. In principle, seed-specific promoters can be isolated both from dicotyledonous and from monocotyledonous plants. Preferred promoters are listed hereinbelow: USP (=unknown seed protein) and vicilin (*Vicia faba*) [Baumlein et al., Mol. Gen. Genet., 1991, 225(3)], napin (oilseed rape) [U.S. Pat. No. 5,608,152], acyl carrier protein (oilseed rape) [U.S. Pat. No. 5,315,001 and WO 92/18634], oleosin (*Arabidopsis thaliana*) [WO 98/45461 and WO 93/20216], phaseolin (*Phaseolus vulgaris*) [U.S. Pat. No. 5,504,200], Bce4 [WO 91/13980], legumines B4 (LegB4 promoter) [Baumlein et al., Plant J., 2, 2, 1992], Lpt2 and Lpt1 (barley) [WO 95/15389 and WO 95/23230], seed-specific promoters from rice, maize and wheat [WO 99/16890], Amy32b, Amy 6-6 and aleurain [U.S. Pat. No. 5,677,474], Bce4 (oilseed rape) [U.S. Pat. No. 5,530,149], glycinin (soybean) [EP 571 741], phosphoenol pyruvate carboxylase (soybean) [JP 06/62870], ADR12-2 (soybean) [WO 98/08962], isocitrate lyase (oilseed rape) [U.S. Pat. No. 5,689,040] or α -amylase (barley) [EP 781 849].

[0049] Plant gene expression can also be facilitated via a chemically inducible promoter (see review in Gatz 1997, Annu. Rev. Plant Physiol. Plant Mol. Biol., 48:89-108). Chemically inducible promoters are particularly suitable when it is desired that gene expression should take place in a time-specific manner. Examples of such promoters are a salicylic-acid-inducible promoter (WO 95/19443), a tetracycline-inducible promoter (Gatz et al. (1992) Plant J. 2, 397-404) and an ethanol-inducible promoter.

[0050] To ensure the stable integration of the biosynthesis genes into the transgenic plant over a plurality of generations, it is usually necessary for each of the nucleic acids which encodes a protein of interest to be expressed under the control of a separate promoter, preferably a promoter which differs from the other promoters, since repeating sequence motifs can lead to instability of the T-DNA, or to recombination events. This is one reason why the nucleic acid of the present invention is particularly advantageous since sequences encoding Δ 9-elongase, Δ 8-desaturase and Δ 5-desaturase can be transcribed as a single unit needing only one promoter. It will, of course, be necessary for other genes encoding, for example, Δ 5-elongase, ω 3-desaturase and/or Δ 4-desaturase to be under the control of separate promoters.

[0051] In this context, the expression cassette is advantageously constructed in such a way that a promoter is followed by a suitable cleavage site, advantageously in a polylinker, for insertion of the nucleic acid to be expressed and, if appropri-

ate, a terminator sequence is positioned behind the polylinker. This sequence is repeated several times, preferably three, four or five times, so that up to five genes can be combined in one construct and introduced into the transgenic plant in order to be expressed. Advantageously, the sequence is repeated up to three times. To express the nucleic acid sequences, the latter are inserted behind the promoter via a suitable cleavage site, for example in the polylinker. Advantageously, each nucleic acid sequence has its own promoter and, if appropriate, its own terminator sequence. Such advantageous constructs are disclosed, for example, in DE 101 02 337 or DE 101 02 338. However, it is also possible to insert a plurality of nucleic acid sequences behind a promoter and, if appropriate, before a terminator sequence. Here, the insertion site, or the sequence, of the inserted nucleic acids in the expression cassette is not of critical importance, that is to say a nucleic acid sequence can be inserted at the first or last position in the cassette without its expression being substantially influenced thereby. Advantageously, different promoters such as, for example, the USP, LegB4 or DC3 promoter, and different terminator sequences can be used in the expression cassette. However, it is also possible to use only one type of promoter in the cassette. This, however, may lead to undesired recombination events.

[0052] As described above, the transcription of the genes which have been introduced should advantageously be terminated by suitable terminator sequences at the 3' end of the biosynthesis genes which have been introduced (behind the stop codon). An example of a sequence which can be used in this context is the OCS 1 terminator sequence. As is the case with the promoters, different terminator sequences should be used for each gene.

[0053] The gene construct of the present invention may also comprise biosynthesis genes of the fatty acid or lipid metabolism selected from the group acyl-CoA dehydrogenase(s), acyl-ACP [=acyl carrier protein] desaturase(s), acyl-ACP thioesterase(s), fatty acid acyltransferase(s), acyl-CoA:lyso-phospholipid acyltransferase(s), fatty acid synthase(s), fatty acid hydroxylase(s), acetyl-coenzyme A carboxylase(s), acyl-coenzyme A oxidase(s), fatty acid desaturase(s), fatty acid acetylases, lipoxygenases, triacylglycerol lipases, allonoxide synthases, hydroperoxide lyases or fatty acid elongase(s) and desaturase(s) such as $\Delta 4$ -desaturase, $\Delta 5$ -desaturase, $\Delta 6$ -desaturase, $\Delta 8$ -desaturase, $\Delta 9$ -desaturase, $\Delta 12$ -desaturase or $\Delta 6$ -elongase.

[0054] These additional nucleic acids or genes can be cloned into the expression cassettes, which are then used for transforming plants with the aid of vectors such as *Agrobacterium*.

[0055] Here, the regulatory sequences or factors can, as described above, preferably have a positive effect on, and thus enhance, the expression genes which have been introduced. Thus, enhancement of the regulatory elements can advantageously take place at the transcriptional level by using strong transcription signals such as promoters and/or enhancers. However, an enhanced translation is also possible, for example by improving the stability of the mRNA. In principle, the expression cassettes can be used directly for introduction into the plants or else be introduced into a vector.

[0056] Therefore, in yet another aspect of the invention, there is provided a vector comprising a nucleic acid or a gene construct in any of the aspects of the invention described above.

[0057] In one embodiment, the vector may be a cloning vector.

[0058] The nucleic acid sequence(s) of the invention may be introduced alone, or preferably, in combination with an expression cassette (nucleic acid construct) into an organism. To introduce the nucleic acids, the latter are advantageously amplified and ligated in the known manner. Preferably, a procedure following the protocol for Pfu DNA polymerase or a Pfu/Taq DNA polymerase mixture is followed. The primers are selected taking into consideration the sequence to be amplified. The primers should advantageously be chosen in such a way that the amplificate comprises the entire codogenic sequence from the start codon to the stop codon. After the amplification, the amplificate is expediently analyzed. For example, a gel-electrophoretic separation can be carried out, which is followed by a quantitative and a qualitative analysis. Thereafter, the amplificate can be purified following a standard protocol (for example Qiagen). An aliquot of the purified amplificate is then available for the subsequent cloning step.

[0059] Suitable cloning vectors are generally known to the skilled worker. These include, in particular, vectors which are capable of replication in microbial systems, that is to say mainly vectors which ensure efficient cloning in yeasts or fungi and which make possible the stable transformation of plants. Those which must be mentioned in particular are various binary and cointegrated vector systems which are suitable for the T-DNA-mediated transformation. Such vector systems are, as a rule, characterized in that they comprise at least the vir genes required for the *Agrobacterium*-mediated transformation and the T-DNA-delimiting sequences (T-DNA border). These vector systems advantageously also comprise further cis-regulatory regions such as promoters and terminator sequences and/or selection markers, by means of which suitably transformed organisms can be identified. While in the case of cointegrated vector systems vir genes and T-DNA sequences are arranged on the same vector, binary systems are based on at least two vectors, one of which bears vir genes, but no T-DNA, while a second one bears T-DNA, but no vir gene. Owing to this fact, the last-mentioned vectors are relatively small, easy to manipulate and to replicate both in *E. coli* and in *Agrobacterium*. These binary vectors include vectors from the series pBIB-HYG, pPZP, pBecks, pGreen. In accordance with the invention, Bin19, pBI101, pBinAR, pGPTV and pCambia are used by preference. An overview of the binary vectors and their use is found in Hellens et al, Trends in Plant Science (2000) 5, 446-451. In order to prepare the vectors, the vectors can first be linearized with restriction endonuclease(s) and then modified enzymatically in a suitable manner. Thereafter, the vector is purified, and an aliquot is employed for the cloning step. In the cloning step, the enzymatically cleaved and, if appropriate, purified amplificate is cloned with vector fragments which have been prepared in a similar manner, using ligase. In this context, a particular nucleic acid construct, or vector or plasmid construct, can have one or else more than one codogenic gene segment. The codogenic gene segments in these constructs are preferably linked operably with regulatory sequences. The regulatory sequences include, in particular, plant sequences such as the above-described promoters and terminator sequences. The constructs can advantageously be stably propagated in microorganisms, in particular in *E. coli* and *Agrobacterium tumefaciens*, under selective conditions and make possible the transfer of heterologous DNA into plants or microorganisms.

[0060] The nucleic acids of the invention can be introduced into organisms such as microorganisms or advantageously plants, advantageously using cloning vectors, and thus be used in the transformation of plants such as those which are published and cited in: *Plant Molecular Biology and Biotechnology* (CRC Press, Boca Raton, Fla.), Chapter 6/7, p. 71-119 (1993); F. F. White, *Vectors for Gene Transfer in Higher Plants*; in: *Transgenic Plants*, Vol. 1, Engineering and Utilization, Ed.: Kung and R. Wu, Academic Press, 1993, 15-38; B. Jenes et al., *Techniques for Gene Transfer*, in: *Transgenic Plants*, Vol. 1, Engineering and Utilization, Ed.: Kung and R. Wu, Academic Press (1993), 128-143; Potrykus, *Annu. Rev. Plant Physiol. Plant Molec. Biol.* 42 (1991), 205-225. Thus, the nucleic acids, the inventive nucleic acids and nucleic acid constructs, and/or vectors used in the process can be used for the recombinant modification of a broad spectrum of organisms, advantageously plants, so that the latter become better and/or more efficient producers of ARA.

[0061] A series of mechanisms exist by which modification of the $\Delta 9$ -elongase, $\Delta 8$ -desaturase and $\Delta 5$ -desaturase proteins is possible, so that the yield, production and/or production efficiency of ARA in a plant, preferably in an oil crop plant or a microorganism, can be influenced directly owing to these modified proteins. The number or activity of the proteins or genes can be increased, so that greater amounts of the gene products and, ultimately, greater amounts of the compounds of the general formula I are produced. A de novo synthesis in an organism which has lacked the activity and ability to biosynthesize the compounds prior to introduction of the corresponding gene(s) is also possible. This applies analogously to the combination with further desaturases or elongases or further enzymes of the fatty acid and lipid metabolism. The use of various divergent sequences, i.e. sequences which differ at the DNA sequence level, may also be advantageous in this context, or else the use of promoters for gene expression which make possible a different gene expression in the course of time, for example as a function of the degree of maturity of a seed or an oil-storing tissue.

[0062] Owing to the introduction of a gene encoding $\Delta 9$ -elongase, $\Delta 8$ -desaturase and/or $\Delta 5$ -desaturase into an organism, alone or in combination with other genes in a cell, it is not only possible to increase biosynthesis flux towards the end product, but also to increase, or to create de novo the corresponding triacylglycerol composition. Likewise, the number or activity of other genes which are involved in the import of nutrients which are required for the biosynthesis of one or more fatty acids, oils, polar and/or neutral lipids, can be increased, so that the concentration of these precursors, cofactors or intermediates within the cells or within the storage compartment is increased, whereby the ability of the cells to produce ARA as described below is enhanced further. By optimizing the activity or increasing the number of one or more genes encoding $\Delta 9$ -elongase, $\Delta 8$ -desaturase and/or $\Delta 5$ -desaturase which are involved in the biosynthesis ARA, or by destroying the activity of one or more genes which are involved in the degradation of ARA, an enhanced yield, production and/or efficiency of production of fatty acid and lipid molecules in organisms, advantageously in plants, is made possible.

[0063] Nucleic acids which can advantageously be used in the process are derived from bacteria, fungi, diatoms, animals such as *Caenorhabditis* or *Oncorhynchus* or plants such as algae or mosses, such as the genera *Shewanella*, *Physcomitrella*, *Thraustochytrium*, *Fusarium*, *Phytophthora*, *Cerat-*

odon, *Mantoniella*, *Ostreococcus*, *Isochrysis*, *Aleurita*, *Muscarioides*, *Mortierella*, *Borago*, *Phaeodactylum*, *Cryptocodinium*, specifically from the genera and species *Oncorhynchus mykiss*, *Xenopus laevis*, *Ciona intestinalis*, *Thalassiosira pseudonona*, *Mantoniella squamata*, *Ostreococcus* sp., *Ostreococcus tauri*, *Euglena gracilis*, *Physcomitrella patens*, *Phytophthora infestans*, *Fusarium gramineum*, *Cryptocodinium cohnii*, *Ceratodon purpureus*, *Isochrysis galbana*, *Aleurita farinosa*, *Thraustochytrium* sp., *Muscarioides viallii*, *Mortierella alpina*, *Borago officinalis*, *Phaeodactylum tricorutum*, *Caenorhabditis elegans* or especially advantageously from *Oncorhynchus mykiss*, *Euglena gracilis*, *Thalassiosira pseudonona* or *Cryptocodinium cohnii*.

[0064] In an alternative embodiment, the vector may be an expression vector designed to transform an organism in which the nucleic acid is to be expressed and linoleic acid converted to ARA.

[0065] These advantageous vectors, preferably expression vectors, comprise the nucleic acid(s) which encode the $\Delta 9$ -elongase, $\Delta 8$ -desaturase and/or $\Delta 5$ -desaturase and which are described in the first to fourth aspects of the invention.

[0066] As used in the present context, the term "vector" refers to a nucleic acid molecule which is capable of transporting another nucleic acid to which it is bound. One type of vector is a "plasmid", a circular double-stranded DNA loop into which additional DNA segments can be ligated. A further type of vector is a viral vector, it being possible for additional DNA segments to be ligated into the viral genome. Certain vectors are capable of autonomous replication in a host cell into which they have been introduced (for example bacterial vectors with bacterial replication origin). Other vectors are advantageously integrated into the genome of a host cell when they are introduced into the host cell, and thus replicate together with the host genome. Moreover, certain vectors can govern the expression of genes with which they are in operable linkage. These vectors are referred to in the present context as "expression vectors". Usually, expression vectors which are suitable for DNA recombination techniques take the form of plasmids.

[0067] In the present description, where the term "plasmid" is used, it should be understood that plasmids can be substituted for other types of expression vector, such as viral vectors, which exert similar functions. Furthermore, the term "vector" is also intended to comprise other vectors with which the skilled worker is familiar, such as phages, viruses such as SV40, CMV, TMV, transposons, IS elements, phasmids, phagemids, cosmids, linear or circular DNA.

[0068] The recombinant expression vectors advantageously used in the process comprise the nucleic acids described below or the above-described gene construct in a form which is suitable for expressing the nucleic acids used in a host cell, which means that the recombinant expression vectors comprise one or more regulatory sequences, selected on the basis of the host cells used for the expression, which regulatory sequence(s) is/are linked operably with the nucleic acid sequence to be expressed. In a recombinant expression vector, "linked operably" means that the nucleotide sequence of interest is bound to the regulatory sequence(s) in such a way that the expression of the nucleotide sequence is possible and they are bound to each other in such a way that both sequences carry out the predicted function which is ascribed to the sequence (for example in an in-vitro transcription/translation system, or in a host cell if the vector is introduced into the host cell). The term "regulatory sequence" is intended

to comprise promoters, enhancers and other expression control elements (for example polyadenylation signals). These regulatory sequences are described, for example, in Goeddel: Gene Expression Technology: Methods in Enzymology 185, Academic Press, San Diego, Calif. (1990), or see: Gruber and Crosby, in: Methods in Plant Molecular Biology and Biotechnology, CRC Press, Boca Raton, Fla., Ed.: Glick and Thompson, Chapter 7, 89-108, including the references cited therein. Regulatory sequences comprise those which govern the constitutive expression of a nucleotide sequence in many types of host cell and those which govern the direct expression of the nucleotide sequence only in specific host cells under specific conditions. The skilled worker knows that the design of the expression vector can depend on factors such as the choice of host cell to be transformed, the desired expression level of the protein and the like.

[0069] The recombinant expression vectors used can be designed for the expression of $\Delta 9$ -elongase, $\Delta 8$ -desaturase and/or $\Delta 5$ -desaturase in prokaryotic or eukaryotic cells. This is advantageous since intermediate steps of the vector construction are frequently carried out in microorganisms for the sake of simplicity. For example, the $\Delta 9$ -elongase, $\Delta 8$ -desaturase and/or $\Delta 5$ -desaturase gene can be expressed in bacterial cells, insect cells (using Baculovirus expression vectors), yeast and other fungal cells (see Romanos, M. A., et al. (1992) "Foreign gene expression in yeast: a review", Yeast 8:423-488; van den Hondel, C. A. M. J. J., et al. (1991) "Heterologous gene expression in filamentous fungi", in: More Gene Manipulations in Fungi, J. W. Bennet & L. L. Lasure, Ed., pp. 396-428: Academic Press: San Diego; and van den Hondel, C. A. M. J. J., & Punt, P. J. (1991) "Gene transfer systems and vector development for filamentous fungi, in: Applied Molecular Genetics of Fungi, Peberdy, J. F., et al., Ed., pp. 1-28, Cambridge University Press: Cambridge), algae (Falcitatore et al., 1999, Marine Biotechnology. 1, 3:239-251), ciliates of the types: *Holotrichia*, *Peritrichia*, *Spirotrichia*, *Suctorina*, *Tetrahymena*, *Paramecium*, *Colpidium*, *Glaucoma*, *Platyophrya*, *Potomacus*, *Desaturaseudocohnilembus*, *Euplotes*, *Engelmanniella* and *Stylonychia*, in particular of the genus *Stylonychia lemnae*, using vectors in a transformation method as described in WO 98/01572 and, preferably, in cells of multi-celled plants (see Schmidt, R. and Willmitzer, L. (1988) "High efficiency *Agrobacterium tumefaciens*-mediated transformation of *Arabidopsis thaliana* leaf and cotyledon explants" Plant Cell Rep.:583-586; Plant Molecular Biology and Biotechnology, C Press, Boca Raton, Fla., Chapter 6/7, pp. 71-119 (1993); F. F. White, B. Jené et al., Techniques for Gene Transfer, in: Transgenic Plants, Vol. 1, Engineering and Utilization, Ed.: Kung and R. Wu, Academic Press (1993), 128-43; Potrykus, Annu. Rev. Plant Physiol. Plant Molec. Biol. 42 (1991), 205-225 (and references cited therein)). Suitable host cells are furthermore discussed in Goeddel, Gene Expression Technology: Methods in Enzymology 185, Academic Press, San Diego, Calif. (1990). As an alternative, the recombinant expression vector can be transcribed and translated in vitro, for example using T7-promoter regulatory sequences and T7-polymerase.

[0070] In most cases, the expression of proteins in prokaryotes involves the use of vectors comprising constitutive or inducible promoters which govern the expression of fusion or nonfusion proteins. Typical fusion expression vectors are, inter alia, pGEX (Pharmacia Biotech Inc; Smith, D. B., and Johnson, K. S. (1988) Gene 67:31-40), pMAL (New England Biolabs, Beverly, Mass.) and pRIT5 (Pharmacia, Piscataway,

N.J.), where glutathione S-transferase (GST), maltose-E binding protein and protein A, respectively, is fused with the recombinant target protein.

[0071] Examples of suitable inducible nonfusion *E. coli* expression vectors are, inter alia, pTrc (Amann et al. (1988) Gene 69:301-315) and pET 11d (Studier et al., Gene Expression Technology: Methods in Enzymology 185, Academic Press, San Diego, Calif. (1990) 60-89). The target gene expression from the pTrc vector is based on the transcription from a hybrid trp-lac fusion promoter by the host RNA polymerase. The target gene expression from the vector pET 11d is based on the transcription of a T7-gn10-lac fusion promoter, which is mediated by a viral RNA polymerase (T7 gn1), which is coexpressed. This viral polymerase is provided by the host strains BL21 (DE3) or HMS174 (DE3) from a resident λ -prophage which harbors a T7 gn1 gene under the transcriptional control of the lacUV 5 promoter.

[0072] Other vectors which are suitable for prokaryotic organisms are known to the skilled worker, these vectors are, for example in *E. coli* pLG338, pACYC184, the pBR series such as pBR322, the pUC series such as pUC18 or pUC19, the M113 mp series, pKC30, pRep4, pHS1, pHS2, pPLc236, pMBL24, pLG200, pUR290, pIN-III113-B1, λ gt11 or pBdCl, in *Streptomyces* pIJ101, pIJ364, pIJ702 or pIJ361, in *Bacillus* pUB110, pC194 or pBD214, in *Corynebacterium* pSA77 or pAJ667.

[0073] In a further embodiment, the expression vector is a yeast expression vector. Examples for vectors for expression in the yeast *S. cerevisiae* comprise pYeDesaturasec1 (Baldari et al. (1987) Embo J. 6:229-234), pMfa (Kurjan and Herskowitz (1982) Cell 30:933-943), pJRY88 (Schultz et al. (1987) Gene 54:113-123) and pYES2 (Invitrogen Corporation, San Diego, Calif.). Vectors and processes for the construction of vectors which are suitable for use in other fungi, such as the filamentous fungi, comprise those which are described in detail in: van den Hondel, C. A. M. J. J., & Punt, P. J. (1991) "Gene transfer systems and vector development for filamentous fungi, in: Applied Molecular Genetics of fungi, J. F. Peberdy et al., Ed., pp. 1-28, Cambridge University Press: Cambridge, or in: More Gene Manipulations in Fungi [J. W. Bennet & L. L. Lasure, Ed., pp. 396-428: Academic Press: San Diego]. Further suitable yeast vectors are, for example, pAG-1, YEpl6, YEpl3 or pEMBLYe23.

[0074] As an alternative, $\Delta 9$ -elongase, $\Delta 8$ -desaturase and/or $\Delta 5$ -desaturase can be expressed in insect cells using Baculovirus vectors. Baculovirus expression vectors which are available for the expression of proteins in cultured insect cells (for example Sf9 cells) comprise the pAc series (Smith et al. (1983) Mol. Cell Biol. 3:2156-2165) and the pVL series (Lucklow and Summers (1989) Virology 170:31-39).

[0075] The abovementioned vectors are only a small overview over suitable vectors which are possible. Further plasmids are known to the skilled worker and are described, for example, in: Cloning Vectors (Ed. Pouwels, P. H., et al., Elsevier, Amsterdam-New York-Oxford, 1985, ISBN 0 444 904018). For further suitable expression systems for prokaryotic and eukaryotic cells, see the Chapters 16 and 17 in Sambrook, J., Fritsch, E. F., and Maniatis, T., Molecular Cloning: A Laboratory Manual, 2. edition, Cold Spring Harbor Laboratory, Cold Spring Harbor Laboratory Press, Cold Spring Harbor, N.Y., 1989.

[0076] In a further embodiment of the process, the $\Delta 9$ -elongase, $\Delta 8$ -desaturase and/or $\Delta 5$ -desaturase can be expressed in single-celled plant cells (such as algae, see Falcitatore et al.,

1999, *Marine Biotechnology* 1 (3):239-251 and references cited therein, and in plant cells from higher plants (for example spermatophytes such as arable crops). Examples of plant expression vectors comprise those which are described in detail in: Becker, D., Kemper, E., Schell, J., and Masterson, R. (1992) "New plant binary vectors with selectable markers located proximal to the left border", *Plant Mol. Biol.* 20:1195-1197; and Bevan, M. W. (1984) "Binary *Agrobacterium* vectors for plant transformation", *Nucl. Acids Res.* 12:8711-8721; Vectors for Gene Transfer in Higher Plants; in: *Transgenic Plants*, Vol. 1, Engineering and Utilization, Ed.: Kung and R. Wu, Academic Press, 1993, p. 15-38.

[0077] A plant expression cassette preferably comprises regulatory sequences which are capable of governing the expression of genes in plant cells and which are linked operably so that each sequence can fulfill its function, such as transcriptional termination, for example polyadenylation signals. Preferred polyadenylation signals are those which are derived from *Agrobacterium tumefaciens* T-DNA, such as gene 3 of the Ti plasmid pTiACH5 (Gielen et al., *EMBO J.* 3 (1984) 835 et seq.), which is known as octopine synthase, or functional equivalents thereof, but all other terminator sequences which are functionally active in plants are also suitable.

[0078] Since plant gene expression is very often not limited to the transcriptional level, a plant expression cassette preferably comprises other sequences which are linked operably, such as translation enhancers, for example the overdrive sequence, which enhances the tobacco mosaic virus 5'-untranslated leader sequence, which increases the protein/RNA ratio (Gallie et al., 1987, *Nucl. Acids Research* 15:8693-8711).

[0079] As described above, plant gene expression must be linked operably with a suitable promoter which triggers gene expression with the correct timing or in a cell- or tissue-specific manner. Utilizable promoters are constitutive promoters (Benfey et al., *EMBO J.* 8 (1989) 2195-2202), such as those which are derived from plant viruses, such as 35S CaMV (Franck et al., *Cell* 21 (1980) 285-294), 19S CaMV (see also U.S. Pat. No. 5,352,605 and WO 84/02913), or plant promoters, such as the promoter of the Rubisco subunit, which is described in U.S. Pat. No. 4,962,028.

[0080] Other preferred sequences for use in operable linkage in plant gene expression cassettes are targeting sequences, which are required for steering the gene product into its corresponding cell compartment (see a review in Kermode, *Crit. Rev. Plant Sci.* 15, 4 (1996) 285-423 and references cited therein), for example into the vacuole, into the nucleus, all types of plastids, such as amyloplasts, chloroplasts, chromoplasts, the extracellular space, the mitochondria, the endoplasmic reticulum, elaioplasts, peroxisomes and other compartments of plant cells.

[0081] As described above, plant gene expression can also be achieved via a chemically inducible promoter (see review in Gatz 1997, *Annu. Rev. Plant Physiol. Plant Mol. Biol.*, 48:89-108). Chemically inducible promoters are particularly suitable when it is desired that the gene expression takes place in a time-specific manner. Examples of such promoters are a salicylic-acid-inducible promoter (WO 95/19443), a tetracyclin-inducible promoter (Gatz et al. (1992) *Plant J.* 2, 397-404) and an ethanol-inducible promoter.

[0082] Promoters which respond to biotic or abiotic stress conditions are also suitable, for example the pathogen-induced PRP1 gene promoter (Ward et al., *Plant. Mol. Biol.* 22

(1993) 361-366), the heat-inducible tomato hsp80 promoter (U.S. Pat. No. 5,187,267), the chill-inducible potato alpha-amylase promoter (WO 96/12814) or the wound-inducible pinII promoter (EP-A-0 375 091).

[0083] Especially preferred are those promoters which bring about the gene expression in tissues and organs in which the biosynthesis of fatty acids, lipids and oils takes place, in seed cells, such as cells of the endosperm and of the developing embryo. Suitable promoters are the oilseed rape napin promoter (U.S. Pat. No. 5,608,152), the *Vicia faba* USP promoter (Baeumlein et al., *Mol Gen Genet*, 1991, 225 (3):459-67), the *Arabidopsis* oleosin promoter (WO 98/45461), the *Phaseolus vulgaris* phaseolin promoter (U.S. Pat. No. 5,504,200), the *Brassica* Bce4 promoter (WO 91/13980) or the legumine B4 promoter (LeB4; Baeumlein et al., 1992, *Plant Journal*, 2 (2):233-9), and promoters which bring about the seed-specific expression in monocotyledonous plants such as maize, barley, wheat, rye, rice and the like. Suitable noteworthy promoters are the barley lpt2 or lpt1 gene promoter (WO 95/15389 and WO 95/23230) or the promoters from the barley hordein gene, the rice glutelin gene, the rice oryzin gene, the rice prolamine gene, the wheat gliadine gene, the wheat glutelin gene, the maize zeine gene, the oat glutelin gene, the sorghum kasirin gene or the rye secalin gene, which are described in WO 99/16890.

[0084] As described above, it may be advantageous to include in an expression cassette nucleic acid encoding enzymes capable of converting ARA to ω 3-unsaturated fatty acids such as EPA or DHA. Thus, for example the expression cassette may also include nucleic acid encoding a Δ 5-elongase, ω 3-desaturase and/or Δ 4-desaturase. Such expression cassettes can be introduced via the simultaneous transformation of a plurality of individual expression constructs or, preferably, by combining a plurality of expression cassettes on one construct. Also, a plurality of vectors can be transformed with in each case a plurality of expression cassettes and then transferred into the host cell.

[0085] Other promoters which are likewise especially suitable are those which bring about a plastid-specific expression, since plastids constitute the compartment in which the precursors and some end products of lipid biosynthesis are synthesized. Suitable promoters, such as the viral RNA polymerase promoter, are described in WO 95/16783 and WO 97/06250, and the clpP promoter from *Arabidopsis*, described in WO 99/46394.

[0086] Vector DNA can be introduced into prokaryotic and eukaryotic cells via conventional transformation or transfection techniques. The terms "transformation" and "transfection", conjugation and transduction, as used in the present context, are intended to comprise a multiplicity of methods known in the prior art for the introduction of foreign nucleic acid (for example DNA) into a host cell, including calcium phosphate or calcium chloride coprecipitation, DEAE-dextran-mediated transfection, lipofection, natural competence, chemically mediated transfer, electroporation or particle bombardment. Suitable methods for the transformation or transfection of host cells, including plant cells, can be found in Sambrook et al. (*Molecular Cloning: A Laboratory Manual*, 2nd ed., Cold Spring Harbor Laboratory, Cold Spring Harbor Laboratory Press, Cold Spring Harbor, N.Y., 1989) and other laboratory textbooks such as *Methods in Molecular Biology*, 1995, Vol. 44, *Agrobacterium* protocols, Ed.: Gartland and Davey, Humana Press, Totowa, N.J.

[0087] In a further aspect of the invention there is provided a transgenic non human organism comprising at least one nucleic acid, gene construct or vector according to a previous aspect of the invention.

[0088] The transgenic nonhuman organism may be a microorganism, a nonhuman animal or a plant.

[0089] Host cells which are suitable in principle for taking up the nucleic acid according to the invention, the gene product according to the invention or the vector according to the invention are all prokaryotic or eukaryotic organisms. The host organisms which are advantageously used are microorganisms such as fungi or yeasts, or plant cells, preferably plants or parts thereof. Fungi, yeasts or plants are preferably used, especially plants, for example plants such as oil crops, which are high in lipid compounds, such as oilseed rape, evening primrose, hemp, thistle, peanut, canola, linseed, soybean, safflower, sunflower, borage, or plants such as maize, wheat, rye, oats, triticale, rice, barley, cotton, cassava, pepper, Tagetes, Solanacea plants such as potato, tobacco, eggplant and tomato, *Vicia* species, pea, alfalfa, bushy plants (coffee, cacao, tea), *Salix* species, trees (oil palm, coconut), and perennial grasses and fodder crops. Especially preferred plants according to the invention are oil crops such as soybean, peanut, oilseed rape, canola, linseed, hemp, evening primrose, sunflower, safflower, trees (oil palm, coconut).

[0090] In an advantageous embodiment, the term "nucleic acid (molecule)" as used in the present context additionally comprises the untranslated sequence at the 3' and at the 5' end of the coding gene region: at least 500, preferably 200, especially preferably 100 nucleotides of the sequence upstream of the 5' end of the coding region and at least 100, preferably 50, especially preferably 20 nucleotides of the sequence downstream of the 3' end of the coding gene region. An "isolated" nucleic acid molecule is separate from other nucleic acid molecules which are present in the natural source of the nucleic acid. An "isolated" nucleic acid preferably has no sequences which naturally flank the nucleic acid in the genomic DNA of the organism from which the nucleic acid is derived (for example sequences which are located at the 5' and 3' ends of the nucleic acid). In various embodiments, the isolated $\Delta 9$ -elongase, $\Delta 8$ -desaturase or $\Delta 5$ -desaturase molecule can comprise for example fewer than approximately 5 kb, 4 kb, 3 kb, 2 kb, 1 kb, 0.5 kb or 0.1 kb of nucleotide sequences which naturally flank the nucleic acid molecule in the genomic DNA of the cell from which the nucleic acid is derived. The same applies to other nucleic acid sequences which may be included in an expression cassette, for example sequences encoding a $\Delta 5$ -elongase, $\omega 3$ -desaturase and/or $\Delta 4$ -desaturase.

[0091] The nucleic acid molecules of the present invention, for example a nucleic acid molecule with a nucleotide sequence of SEQ ID NO: 1 or residues 7668 to 12077 thereof, or the parts of SEQ ID NO: 1 specified in the second to fourth aspects of the invention, can be isolated using molecular-biological standard techniques and the sequence information provided herein. Also, for example a homologous sequence or homologous, conserved sequence regions can be identified at the DNA or amino acid level with the aid of comparative algorithms. They can be used as hybridization probe and standard hybridization techniques (such as, for example, those described in Sambrook et al., Molecular Cloning: A Laboratory Manual, 2nd ed., Cold Spring Harbor Laboratory,

Cold Spring Harbor Laboratory Press, Cold Spring Harbor, N.Y., 1989) for isolating further nucleic acid sequences which can be used in the process.

[0092] Moreover, a nucleic acid molecule from *Perkinsus marinus* comprising a complete sequence of SEQ ID NO: 1 or a part thereof can be isolated by polymerase chain reaction, where oligonucleotide primers which are used on the basis of this sequence or parts thereof (for example a nucleic acid molecule comprising the complete sequence or part thereof can be isolated by polymerase chain reaction using oligonucleotide primers which have been generated based on this same sequence). For example, mRNA can be isolated from cells (for example by means of the guanidinium thiocyanate extraction method of Chirgwin et al. (1979) Biochemistry 18:5294-5299) and cDNA by means of reverse transcriptase (for example Moloney MLV reverse transcriptase, available from Gibco/BRL, Bethesda, Md., or AMV reverse transcriptase, available from Seikagaku America, Inc., St. Petersburg, Fla.).

[0093] Synthetic oligonucleotide primers for the amplification by means of polymerase chain reaction can be generated based on one of the sequences shown in SEQ ID NO: 1 or with the aid of the amino acid sequences detailed in SEQ ID NO: 2, SEQ ID NO: 3 and SEQ ID NO: 4. Particularly suitable primers are shown in the Examples as SEQ ID NO: 5 and SEQ ID NO: 6.

[0094] A nucleic acid according to the invention can be amplified by standard PCR amplification techniques using cDNA or, alternatively, genomic DNA as template (SEQ ID NO 9) and suitable oligonucleotide primers (SEQ ID NO: 5 and SEQ ID NO: 6). The nucleic acid amplified thus can be cloned into a suitable vector and characterized by means of DNA sequence analysis. Oligonucleotides which correspond to a desaturase or elongase nucleotide sequence can be generated by standard synthetic methods, for example using an automatic DNA synthesizer.

[0095] The abovementioned nucleic acids and protein molecules with $\Delta 9$ -elongase, $\Delta 8$ -desaturase and/or $\Delta 5$ -desaturase activity may be used in a process for the production of ARA from linoleic acid in transgenic organisms.

[0096] Therefore, in a further aspect of the invention, there is provided a process for the conversion of linoleic acid or a derivative thereof to arachidonic acid or a derivative thereof in an organism, the process comprising introducing into an organism which comprises linoleic acid at least one nucleic acid sequence comprising:

[0097] a) SEQ ID NO: 1 (Full sequence 1047306867), sequence comprising nucleic acid residues 7668 to 12077 of SEQ ID NO: 1 or a homolog of one of these;

[0098] b) nucleic acid sequences which hybridize under stringent conditions with a nucleic acid sequence of SEQ ID NO: 1 or a sequence comprising nucleic acid residues 7668 to 12077 of SEQ ID NO: 1;

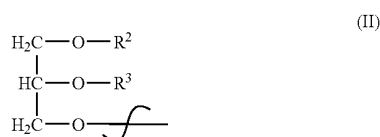
[0099] c) an isolated nucleic acid sequence which encodes polypeptides with $\Delta 9$ -elongase, $\Delta 8$ -desaturase and $\Delta 5$ -desaturase activity, wherein the polypeptides are selected from the group consisting of SEQ ID NOS 2, 3 and 4;

[0100] d) A derivative of a nucleic acid sequence of SEQ ID NO: 1 which encodes polypeptides with at least 40% identity at the amino acid level with SEQ ID NO: 2, SEQ ID NO: 3 and SEQ ID NO: 4; wherein said polypeptides have $\Delta 9$ -elongase, $\Delta 8$ -desaturase and $\Delta 5$ -desaturase activity.

and expressing said nucleic acid sequence.

[0101] In the context of the present invention, a “derivative” of linoleic or arachidonic acid is a compound in which the OH of the carboxylic acid moiety is replaced by a moiety R^1 , wherein:

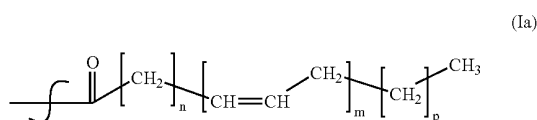
[0102] R^1 is coenzyme A (thioester), lysophosphatidylcholine, lysophosphatidylethanolamine, lysophosphatidylglycerol, lysodiphosphatidylglycerol, lysophosphatidylserine, lysophosphatidylinositol, sphingo base or a radical of the formula II



[0103] in which

[0104] R^2 =hydrogen, lysophosphatidyl choline, lysophosphatidylethanolamine, lysophosphatidylglycerol, lysodiphosphatidylglycerol, lysophosphatidylserine, lysophosphatidylinositol or saturated or unsaturated C_2 - C_{24} -alkylcarbonyl,

[0105] R^3 =hydrogen, saturated or unsaturated C_2 - C_{24} -alkylcarbonyl, or R^2 and R^3 independently of one another are a radical of the formula Ia:



[0106] in which

[0107] $n=2, 3, 4, 5, 6, 7$ or 9 , $m=2, 3, 4, 5$ or 6 and $p=0$ or 3 ;

[0108] and wherein an oxygen in the R^1 radical may be replaced by sulphur such that R^1 is bonded to the remainder of the molecule via a thioester linkage.

[0109] The processes according to the invention preferably yields total ARA in a content of at least 1% by weight, advantageously at least 3% by weight, based on the total fatty acids in the transgenic organisms, preferably in a transgenic plant.

[0110] Since a plurality of reaction steps are performed by the starting compounds linoleic acid ($18:2^{\Delta 9,12}$) in the process according to the invention, ARA ($20:4^{\Delta 5,8,11,14}$) is not obtained as a pure product; minor traces of the precursors are always present in the end product.

[0111] Chemically pure ARA can also be synthesized by the process described above. To this end, ARA or a derivative thereof is isolated from the organisms, such as the microorganisms or the plants or the culture medium in or on which the organisms have been grown, or from the organism and the culture medium, in the known manner, for example via extraction, distillation, crystallization, chromatography or a combination of these methods. These chemically ARA or ARA derivatives are advantageous for applications in the food industry sector, the cosmetic sector and especially the pharmacological industry sector.

[0112] The process may include additional steps of converting the ARA to an ω -3 fatty acid by introducing into the

organism nucleic acid encoding a ω -3 desaturase and optionally a $\Delta 5$ -elongase and/or a $\Delta 4$ -elongase and/or a $\Delta 4$ -desaturase.

[0113] In a further aspect the invention comprises a process for the conversion of $18:2^{\Delta 9,12}$ (linoleic acid) to $20:2^{\Delta 11,14}$, the process comprising introducing into an organism which comprises linoleic acid at least one nucleic acid sequence which encodes a polypeptide having $\Delta 9$ -elongase activity and which comprises:

[0114] a) a sequence comprising nucleic acid residues 7668 to 9200 of SEQ ID NO: 1, SEQ ID NO: 9 or a homolog of one of these;

[0115] b) a nucleic acid sequence which hybridizes under stringent conditions with a nucleic acid sequence comprising residues 7668 to 9200 of SEQ ID NO: 1 or SEQ ID NO: 9;

[0116] c) an isolated nucleic acid sequence which encodes a polypeptide with $\Delta 9$ -elongase activity, wherein the polypeptide comprises SEQ ID NO: 2 or SEQ ID NO: 10;

[0117] d) A derivative of a sequence comprising nucleic acid residues 7668 to 9200 of SEQ ID NO: 1 or SEQ ID NO: 9 which encodes a polypeptide with at least 40% identity at the amino acid level with SEQ ID NO: 2 or SEQ ID NO: 10;

[0118] wherein said polypeptide has $\Delta 9$ -elongase activity;

and expressing said nucleic acid sequence.

[0119] In a further aspect of the invention there is provided a process for the conversion of $20:2^{\Delta 11,14}$ to $20:3^{\Delta 8,11,14}$, the process comprising introducing into an organism which comprises $20:2^{\Delta 11,14}$, or which comprises linoleic acid and a $\Delta 9$ elongase, an isolated nucleic acid sequence which encodes a polypeptide with $\Delta 8$ -desaturase activity and which is selected from the group consisting of:

[0120] a) a sequence comprising nucleic acid residues 9351 to 10724 of SEQ ID NO: 1 or a homolog thereof;

[0121] b) nucleic acid sequences which hybridize under stringent conditions with a nucleic acid sequence comprising residues 9351 to 10724 of SEQ ID NO: 1;

[0122] c) an isolated nucleic acid sequence which encodes polypeptides with $\Delta 8$ -desaturase activity, wherein the polypeptide comprises SEQ ID NO: 3;

[0123] d) A derivative of a sequence comprising nucleic acid residues 9351 to 10724 of SEQ ID NO: 1 which encodes a polypeptide with at least 40% identity at the amino acid level with SEQ ID NO: 3; wherein said polypeptide has $\Delta 8$ -desaturase activity; and

expressing said nucleic acid sequence.

[0124] In a further aspect of the invention, there is provided a process for the conversion of $20:3^{\Delta 8,11,14}$ to $20:4^{\Delta 5,8,11,14}$ (ARA), the process comprising introducing into an organism which comprises $20:3^{\Delta 8,11,14}$ or which comprises $20:2^{\Delta 11,14}$ and a $\Delta 8$ -desaturase, or which comprises linoleic acid, a $\Delta 9$ elongase and a $\Delta 8$ -desaturase, an isolated nucleic acid sequence which encodes a polypeptide with $\Delta 5$ -desaturase activity and which is selected from the group consisting of:

[0125] a) a sequence comprising nucleic acid residues 10842 to 12077 of SEQ ID NO: 1 or a homolog thereof;

[0126] b) nucleic acid sequences which hybridize under stringent conditions with a nucleic acid sequence comprising residues 10842 to 12077 of SEQ ID NO: 1;

[0127] c) an isolated nucleic acid sequence which encodes polypeptides with $\Delta 5$ -desaturase activity, wherein the polypeptide comprises SEQ ID NO: 4;

[0128] d) A derivative of a sequence comprising nucleic acid residues 10842 to 12077 of SEQ ID NO: 1 which encodes a polypeptide with at least 40% identity at the amino acid level with SEQ ID NO: 4; wherein said polypeptide has $\Delta 5$ -desaturase activity.

and expressing said nucleic acid sequence.

[0129] The process may include additional steps of converting the ARA to an ω -3 fatty acid by introducing into the organism nucleic acid encoding a ω -3 desaturase and optionally a $\Delta 5$ -elongase and/or a $\Delta 4$ -elongase and/or a $\Delta 4$ -desaturase.

[0130] For the processes set out above, it has been found that expression has been most effectively achieved using induction with galactose.

[0131] Suitable organisms for the production in the process according to the invention are, in principle, any organisms such as microorganisms, nonhuman animals or plants.

[0132] Plants which are suitable are, in principle, all those plants which are capable of synthesizing fatty acids, such as all dicotyledonous or monocotyledonous plants, algae or mosses. Advantageous plants are selected from the group of the plant families Adolotheciaceae, Anacardiaceae, Asteraceae, Apiaceae, Betulaceae, Boraginaceae, Brassicaceae, Bromeliaceae, Caricaceae, Cannabaceae, Convolvulaceae, Chenopodiaceae, Cryptocodiniaceae, Cucurbitaceae, Ditrichaceae, Elaeagnaceae, Ericaceae, Euphorbiaceae, Fabaceae, Geraniaceae, Gramineae, Juglandaceae, Lauraceae, Leguminosae, Linaceae, Euglenaceae, Prasino-phyceae or vegetable plants or ornamentals such as Tagetes.

[0133] Examples which may be mentioned are the following plants selected from the group consisting of: Adolotheciaceae such as the genera *Physcomitrella*, for example the genus and species *Physcomitrella patens*, Anacardiaceae such as the genera *Pistacia*, *Mangifera*, *Anacardium*, for example the genus and species *Pistacia vera* [pistachio], *Mangifera indica* [mango] or *Anacardium occidentale* [cashew], Asteraceae, such as the genera *Calendula*, *Carthamus*, *Centaurea*, *Cichorium*, *Cynara*, *Helianthus*, *Lactuca*, *Locusta*, *Tagetes*, *Valeriana*, for example the genus and species *Calendula officinalis* [common marigold], *Carthamus tinctorius* [safflower], *Centaurea cyanus* [cornflower], *Cichorium intybus* [chicory], *Cynara scolymus* [artichoke], *Helianthus annuus* [sunflower], *Lactuca sativa*, *Lactuca crista*, *Lactuca esculenta*, *Lactuca scariola* L. ssp. *sativa*, *Lactuca scariola* L. var. *integrata*, *Lactuca scariola* L. var. *integrifolia*, *Lactuca sativa* subsp. *romana*, *Locusta communis*, *Valeriana locusta* [salad vegetables], *Tagetes lucida*, *Tagetes erecta* or *Tagetes tenuifolia* [african or french marigold], Apiaceae, such as the genus *Daucus*, for example the genus and species *Daucus carota* [carrot], Betulaceae, such as the genus *Corylus*, for example the genera and species *Corylus avellana* or *Corylus columa* [hazelnut], Boraginaceae, such as the genus *Borago*, for example the genus and species *Borago officinalis* [borage], Brassicaceae, such as the genera *Brassica*, *Camelina*, *Melanosinapis*, *Sinapis*, *Arabidopsis*, for example the genera and species *Brassica napus*, *Brassica rapa* ssp. [oilseed rape], *Sinapis arvensis* *Brassica juncea*, *Brassica juncea* var. *juncea*, *Brassica juncea* var. *crispifolia*, *Brassica juncea* var. *foliosa*, *Brassica nigra*, *Brassica sinapioides*, *Camelina sativa*, *Melanosinapis communis* [mustard], *Brassica oleracea* [fodder beet] or *Arabidopsis*

thaliana, Bromeliaceae, such as the genera *Anana*, *Bromelia* (pineapple), for example the genera and species *Anana comosus*, *Ananas ananas* or *Bromelia comosa* [pineapple], Caricaceae, such as the genus *Carica*, such as the genus and species *Carica papaya* [pawpaw], Cannabaceae, such as the genus *Cannabis*, such as the genus and species *Cannabis sativa* [hemp], Convolvulaceae, such as the genera *Ipomea*, *Convolvulus*, for example the genera and species *Ipomea batatas*, *Ipomea pandurata*, *Convolvulus batatas*, *Convolvulus tiliaceus*, *Ipomea fastigiata*, *Ipomea tiliacea*, *Ipomea triloba* or *Convolvulus panduratus* [sweet potato, batate], Chenopodiaceae, such as the genus *Beta*, such as the genera and species *Beta vulgaris*, *Beta vulgaris* var. *altissima*, *Beta vulgaris* var. *vulgaris*, *Beta maritima*, *Beta vulgaris* var. *perennis*, *Beta vulgaris* var. *conditiva* or *Beta vulgaris* var. *esculenta* [sugarbeet], Cryptocodiniaceae, such as the genus *Cryptocodium*, for example the genus and species *Cryptocodium cohnii*, Cucurbitaceae, such as the genus *Cucurbita*, for example the genera and species *Cucurbita maxima*, *Cucurbita mixta*, *Cucurbita pepo* or *Cucurbita moschata* [pumpkin/squash], Cymbellaceae, such as the genera *Amphora*, *Cymbella*, *Okedenia*, *Phaeodactylum*, *Reimeria*, for example the genus and species *Phaeodactylum tricornutum*, Ditrichaceae, such as the genera *Ditrichaceae*, *Astomiopsis*, *Ceratodon*, *Chrysoblastella*, *Ditrichum*, *Distichium*, *Eccremidium*, *Lophidion*, *Philibertiella*, *Pleuridium*, *Saelania*, *Trichodon*, *Skottsbergia*, for example the genera and species *Ceratodon antarcticus*, *Ceratodon columbiae*, *Ceratodon heterophyllus*, *Ceratodon purpurascens*, *Ceratodon purpureus*, *Ceratodon purpureus* ssp. *convolutus*, *Ceratodon purpureus* ssp. *stenocarpus*, *Ceratodon purpureus* var. *rotundifolius*, *Ceratodon ratodon*, *Ceratodon stenocarpus*, *Chrysoblastella chilensis*, *Ditrichum ambiguum*, *Ditrichum brevisetum*, *Ditrichum crispatisimum*, *Ditrichum difficile*, *Ditrichum falcifolium*, *Ditrichum flexicaule*, *Ditrichum giganteum*, *Ditrichum heteromallum*, *Ditrichum lineare*, *Ditrichum lineare*, *Ditrichum montanum*, *Ditrichum montanum*, *Ditrichum pallidum*, *Ditrichum punctulatum*, *Ditrichum pusillum*, *Ditrichum pusillum* var. *tortile*, *Ditrichum rhynchostegium*, *Ditrichum schimperii*, *Ditrichum tortile*, *Distichium capillaceum*, *Distichium hagenii*, *Distichium inclinatum*, *Distichium macounii*, *Eccremidium floridanum*, *Eccremidium whiteleggei*, *Lophidion strictus*, *Pleuridium acuminatum*, *Pleuridium alternifolium*, *Pleuridium holdridgei*, *Pleuridium mexicanum*, *Pleuridium ravenelii*, *Pleuridium subulatum*, *Saelania glaucescens*, *Trichodon borealis*, *Trichodon cylindricus* or *Trichodon cylindricus* var. *oblongus*, Elaeagnaceae, such as the genus *Elaeagnus*, for example the genus and species *Olea europaea* [olive], Ericaceae, such as the genus *Kalmia*, for example the genera and species *Kalmia latifolia*, *Kalmia angustifolia*, *Kalmia microphylla*, *Kalmia polifolia*, *Kalmia occidentalis*, *Cistus chamaerhodendros* or *Kalmia lucida* [mountain laurel], Euglenaceae, such as the genera *Ascoglena*, *Astasia*, *Colacium*, *Cyclidiopsis*, *Euglena*, *Euglenopsis*, *Hyalaphacus*, *Khawkinea*, *Lepocinclis*, *Phacus*, *Strombomonas*, *Trachelomonas*, for example the genus and species *Euglena gracilis*; Euphorbiaceae, such as the genera *Manihot*, *Janipha*, *Jatropha*, *Ricinus*, for example the genera and species *Manihot utilissima*, *Janipha manihot*, *Jatropha manihot*, *Manihot aipil*, *Manihot dulcis*, *Manihot manihot*, *Manihot melanobasis*, *Manihot esculenta* [cassava] or *Ricinus communis* [castor-oil plant], Fabaceae, such as the genera *Pisum*, *Albizia*, *Cathormion*, *Feuillea*, *Inga*, *Pithecolobium*, *Acacia*,

Mimosa, *Medicago*, *Glycine*, *Dolichos*, *Phaseolus*, soybean, for example the genera and species *Pisum sativum*, *Pisum arvense*, *Pisum humile* [pea], *Albizia berteriana*, *Albizia julibrissin*, *Albizia lebbbeck*, *Acacia berteriana*, *Acacia littoralis*, *Albizia berteriana*, *Albizia berteriana*, *Cathormion berteriana*, *Feuillea berteriana*, *Inga fragrans*, *Pithecellobium berterianum*, *Pithecellobium fragrans*, *Pithecolobium berterianum*, *Pseudalbizia berteriana*, *Acacia julibrissin*, *Acacia nemu*, *Albizia nemu*, *Feuillea julibrissin*, *Mimosa julibrissin*, *Mimosa speciosa*, *Sericanrda julibrissin*, *Acacia lebbbeck*, *Acacia macrophylla*, *Albizia lebbbeck*, *Feuillea lebbbeck*, *Mimosa lebbbeck*, *Mimosa speciosa*, *Medicago sativa*, *Medicago falcata*, *Medicago varia* [alfalfa] *Glycine max* *Dolichos soja*, *Glycine gracilis*, *Glycine hispida*, *Phaseolus max*, *Soja hispida* or *Soja max* [soybean], *Funariaceae*, such as the genera *Aphanorrhagma*, *Entosthodon*, *Funaria*, *Physcomitrella*, *Physcomitrium*, for example the genera and species *Aphanorrhagma serratum*, *Entosthodon attenuatus*, *Entosthodon bolanderi*, *Entosthodon bonplandii*, *Entosthodon californicus*, *Entosthodon drummondii*, *Entosthodon jamesonii*, *Entosthodon leibergii*, *Entosthodon neoscoticus*, *Entosthodon rubrisetus*, *Entosthodon spathulifolius*, *Entosthodon tucsoni*, *Funaria americana*, *Funaria bolanderi*, *Funaria calcarea*, *Funaria californica*, *Funaria calvescens*, *Funaria convoluta*, *Funaria flavicans*, *Funaria grou-tiana*, *Funaria hygrometrica*, *Funaria hygrometrica* var. *arctica*, *Funaria hygrometrica* var. *calvescens*, *Funaria hygrometrica* var. *convoluta*, *Funaria hygrometrica* var. *muralis*, *Funaria hygrometrica* var. *utahensis*, *Funaria microstoma*, *Funaria microstoma* var. *obtusifolia*, *Funaria muhlenbergii*, *Funaria orcuttii*, *Funaria piano-convexa*, *Funaria polaris*, *Funaria ravenelii*, *Funaria rubriseta*, *Funaria serrata*, *Funaria sonora*, *Funaria sublimbatum*, *Funaria tucsoni*, *Physcomitrella californica*, *Physcomitrella patens*, *Physcomitrella readeri*, *Physcomitrium australe*, *Physcomitrium californicum*, *Physcomitrium collenchymatum*, *Physcomitrium colora dense*, *Physcomitrium cupuliferum*, *Physcomitrium drummondii*, *Physcomitrium eury-stomum*, *Physcomitrium flexifolium*, *Physcomitrium hookeri*, *Physcomitrium hookeri* var. *serratum*, *Physcomitrium immersum*, *Physcomitrium kellermanii*, *Physcomitrium megalocarpum*, *Physcomitrium pyriforme*, *Physcomitrium pyriforme* var. *serratum*, *Physcomitrium rufipes*, *Physcomitrium sandbergii*, *Physcomitrium subsphaericum*, *Physcomitrium washingtoniense*, *Geraniaceae*, such as the genera *Pelargonium*, *Cocos*, *Oleum*, for example the genera and species *Cocos nucifera*, *Pelargonium grossularioides* or *Oleum cocois* [coconut], *Gramineae*, such as the genus *Saccharum*, for example the genus and species *Saccharum officinarum*, *Juglandaceae*, such as the genera *Juglans*, *Wallia*, for example the genera and species *Juglans regia*, *Juglans ailanthifolia*, *Juglans sieboldiana*, *Juglans cinerea*, *Wallia cinerea*, *Juglans bixbyi*, *Juglans californica*, *Juglans hindsii*, *Juglans intermedia*, *Juglans jamaicensis*, *Juglans major*, *Juglans microcarpa*, *Juglans nigra* or *Wallia nigra* [walnut], *Lauraceae*, such as the genera *Persea*, *Laurus*, for example the genera and species *Laurus nobilis* [bay], *Persea americana*, *Persea gratissima* or *Persea persea* [avocado], *Leguminosae*, such as the genus *Arachis*, for example the genus and species *Arachis hypogaea* [peanut], *Linaceae*, such as the genera *Adenolinum*, for example the genera and species *Linum usitatissimum*, *Linum humile*, *Linum austriacum*, *Linum bienne*, *Linum angustifolium*, *Linum catharticum*, *Linum flavum*, *Linum grandiflorum*, *Adenolinum grandiflorum*, *Linum lewisii*,

Linum narbonense, *Linum perenne*, *Linum perenne* var. *lewisii*, *Linum pratense* or *Linum trigynum* [linseed], *Lyth-rarieae*, such as the genus *Punica*, for example the genus and species *Punica granatum* [pomegranate], *Malvaceae*, such as the genus *Gossypium*, for example the genera and species *Gossypium hirsutum*, *Gossypium arboreum*, *Gossypium barbadense*, *Gossypium herbaceum* or *Gossypium thurberi* [cot-ton], *Marchantiaceae*, such as the genus *Marchantia*, for example the genera and species *Marchantia berteriana*, *Marchantia foliacea*, *Marchantia macropora*, *Musaceae*, such as the genus *Musa*, for example the genera and species *Musa nana*, *Musa acuminata*, *Musa paradisiaca*, *Musa* spp. [banana], *Onagraceae*, such as the genera *Camissonia*, *Oenothera*, for example the genera and species *Oenothera biennis* or *Camissonia brevipes* [evening primrose], *Palmae*, such as the genus *Elaeis*, for example the genus and species *Elaeis guineensis* [oil palm], *Papaveraceae*, such as, for example, the genus *Papaver*, for example the genera and species *Papaver orientale*, *Papaver rhoeas*, *Papaver dubium* [poppy], *Pedaliaceae*, such as the genus *Sesamum*, for example the genus and species *Sesamum indicum* [sesame], *Piperaceae*, such as the genera *Piper*, *Artanthe*, *Peperomia*, *Steffensia*, for example the genera and species *Piper adun-cum*, *Piper amalago*, *Piper angustifolium*, *Piper auritum*, *Piper betel*, *Piper cubeba*, *Piper longum*, *Piper nigrum*, *Piper retrofractum*, *Artanthe adunca*, *Artanthe elongata*, *Peperomia elongata*, *Piper elongatum*, *Steffensia elongata* [cayenne pepper], *Poaceae*, such as the genera *Hordeum*, *Secale*, *Avena*, *Sorghum*, *Andropogon*, *Holcus*, *Panicum*, *Oryza*, *Zea* (maize), *Triticum*, for example the genera and species *Hordeum vulgare*, *Hordeum jubatum*, *Hordeum murinum*, *Hordeum secalinum*, *Hordeum distichon* *Hordeum aegiceras*, *Hordeum hexastichon*, *Hordeum hexastichum*, *Hordeum irregulare*, *Hordeum sativum*, *Hordeum secalinum* [barley], *Secale cereale* [rye], *Avena sativa*, *Avena fatua*, *Avena byzantina*, *Avena fatua* var. *sativa*, *Avena hybrida* [oats], *Sorghum bicolor*, *Sorghum halepense*, *Sorghum saccharatum*, *Sorghum vulgare*, *Andropogon drummondii*, *Hol-cus bicolor*, *Holcus sorghum*, *Sorghum aethiopicum*, *Sorghum arundinaceum*, *Sorghum caffrorum*, *Sorghum cernuum*, *Sorghum dochna*, *Sorghum drummondii*, *Sorghum durra*, *Sorghum guineense*, *Sorghum lanceolatum*, *Sorghum nervosum*, *Sorghum saccharatum*, *Sorghum subglabrescens*, *Sorghum verticilliflorum*, *Sorghum vulgare*, *Holcus halepen-sis*, *Sorghum miliaceum*, *Panicum militaceum* [millet], *Oryza sativa*, *Oryza latifolia* [rice], *Zea mays* [maize] *Triticum aestivum*, *Triticum durum*, *Triticum turgidum*, *Triticum hybe-mum*, *Triticum macha*, *Triticum sativum* or *Triticum vulgare* [wheat], *Porphyridiaceae*, such as the genera *Chrootheca*, *Flintiella*, *Petrovanella*, *Porphyridium*, *Rhodella*, *Rhodorus*, *Vanhoeffenia*, for example the genus and species *Porphyridium cruentum*, *Proteaceae*, such as the genus *Mac-adamia*, for example the genus and species *Macadamia inter-grifolia* [macadamia], *Prasinophyceae*, such as the genera *Nephroselmis*, *Prasinococcus*, *Scherffelia*, *Tetraselmis*, *Mantoniella*, *Ostreococcus*, for example the genera and species *Nephroselmis olivacea*, *Prasinococcus capsulatus*, *Scherffe-lia dubia*, *Tetraselmis chui*, *Tetraselmis suecica*, *Mantoniella squamata*, *Ostreococcus tauri*, *Rubiaceae*, such as the genus *Coffea*, for example the genera and species *Coffea* spp., *Coffea arabica*, *Coffea canephora* or *Coffea liberica* [coffee], *Scrophulariaceae*, such as the genus *Verbascum*, for example the genera and species *Verbascum blattaria*, *Verbascum chaixii*, *Verbascum densiflorum*, *Verbascum lagurus*, *Verbascum*

longifolium, *Verbascum lychnitis*, *Verbascum nigrum*, *Verbascum olympicum*, *Verbascum phlomoides*, *Verbascum phoenicum*, *Verbascum pulverulentum* or *Verbascum thapsus* [verbascum], *Solanaceae*, such as the genera *Capsicum*, *Nicotiana*, *Solanum*, *Lycopersicon*, for example the genera and species *Capsicum annuum*, *Capsicum annuum* var. *glabriusculum*, *Capsicum frutescens* [pepper], *Capsicum annuum* [paprika], *Nicotiana tabacum*, *Nicotiana alata*, *Nicotiana attenuata*, *Nicotiana glauca*, *Nicotiana langsdorffii*, *Nicotiana obtusifolia*, *Nicotiana quadrivalvis*, *Nicotiana repanda*, *Nicotiana rustica*, *Nicotiana sylvestris* [tobacco], *Solanum tuberosum* [potato], *Solanum melongena* [eggplant] *Lycopersicon esculentum*, *Lycopersicon lycopersicum*, *Lycopersicon pyriforme*, *Solanum integrifolium* or *Solanum lycopersicum* [tomato], *Sterculiaceae*, such as the genus *Theobroma*, for example the genus and species *Theobroma cacao* [cacao] or *Theaceae*, such as the genus *Camellia*, for example the genus and species *Camellia sinensis* [tea].

[0134] Advantageous microorganisms are, for example, fungi selected from the group of the families Chaetomiaceae, Choanephoraceae, Cryptococcaceae, Cunninghamellaceae, Dematiaceae, Moniliaceae, Mortierellaceae, Mucoraceae, Pythiaceae, Saccharomycetaceae, Saprolegniaceae, Schizosaccharomycetaceae, Sodariaceae or Tuberculariaceae.

[0135] Examples of microorganisms which may be mentioned are those from the groups Choanephoraceae, such as the genera *Blakeslea*, *Choanephora*, for example the genera and species *Blakeslea trispora*, *Choanephora cucurbitarum*, *Choanephora infundibulifera* var. *cucurbitarum*, *Mortierellaceae*, such as the genus *Mortierella*, for example the genera and species *Mortierella isabellina*, *Mortierella polycephala*, *Mortierella ramanniana*, *Mortierella vinacea*, *Mortierella zonata*, *Pythiaceae*, such as the genera *Phytium*, *Phytophthora*, for example the genera and species *Pythium debaryanum*, *Pythium intermedium*, *Pythium irregulare*, *Pythium megalacanthum*, *Pythium parocandrum*, *Pythium sylvaticum*, *Pythium ultimum*, *Phytophthora cactorum*, *Phytophthora cinnamomi*, *Phytophthora citricola*, *Phytophthora citrophthora*, *Phytophthora cryptogea*, *Phytophthora drechsleri*, *Phytophthora erythroseptica*, *Phytophthora lateralis*, *Phytophthora megasperma*, *Phytophthora nicotianae*, *Phytophthora nicotianae* var. *parasitica*, *Phytophthora palmivora*, *Phytophthora parasitica*, *Phytophthora syringae*, *Saccharomycetaceae*, such as the genera *Hansenula*, *Pichia*, *Saccharomyces*, *Saccharomycodes*, *Yarrowia*, for example the genera and species *Hansenula anomala*, *Hansenula californica*, *Hansenula canadensis*, *Hansenula capsulata*, *Hansenula ciferrii*, *Hansenula glucozyma*, *Hansenula henricii*, *Hansenula holstii*, *Hansenula minuta*, *Hansenula nonfermentans*, *Hansenula philodendri*, *Hansenula polymorpha*, *Hansenula satumus*, *Hansenula subpelliculosa*, *Hansenula wickerhamii*, *Hansenula wingei*, *Pichia alcoholophila*, *Pichia angusta*, *Pichia anomala*, *Pichia bisporea*, *Pichia burtonii*, *Pichia canadensis*, *Pichia capsulata*, *Pichia carsonii*, *Pichia cellobiosa*, *Pichia ciferrii*, *Pichia farinosa*, *Pichia fermentans*, *Pichia finlandica*, *Pichia glucozyma*, *Pichia guilliermondii*, *Pichia haplophila*, *Pichia henricii*, *Pichia hoistii*, *Pichia jadinii*, *Pichia lindnerii*, *Pichia membranaefaciens*, *Pichia methanolica*, *Pichia minuta* var. *minuta*, *Pichia minuta* var. *nonfermentans*, *Pichia norvegensis*, *Pichia ohmeri*, *Pichia pastoris*, *Pichia philodendri*, *Pichia pini*, *Pichia polymorpha*, *Pichia quercuum*, *Pichia rhodanensis*, *Pichia sargentensis*, *Pichia stipitis*, *Pichia strasburgensis*, *Pichia subpelliculosa*, *Pichia toletana*, *Pichia treh-*

alophila, *Pichia vini*, *Pichia xylosa*, *Saccharomyces acetii*, *Saccharomyces bailii*, *Saccharomyces bayanus*, *Saccharomyces bisporus*, *Saccharomyces capensis*, *Saccharomyces carlsbergensis*, *Saccharomyces cerevisiae*, *Saccharomyces cerevisiae* var. *ellipsoideus*, *Saccharomyces chevalieri*, *Saccharomyces delbrueckii*, *Saccharomyces diastaticus*, *Saccharomyces drosophilae*, *Saccharomyces elegans*, *Saccharomyces ellipsoideus*, *Saccharomyces fermentati*, *Saccharomyces florentinus*, *Saccharomyces fragilis*, *Saccharomyces heterogenicus*, *Saccharomyces hienpiensis*, *Saccharomyces inusitatus*, *Saccharomyces italicus*, *Saccharomyces kluyveri*, *Saccharomyces krusei*, *Saccharomyces lactis*, *Saccharomyces marxianus*, *Saccharomyces microellipsoideus*, *Saccharomyces montanus*, *Saccharomyces norbensis*, *Saccharomyces oleaceus*, *Saccharomyces paradoxus*, *Saccharomyces pastorianus*, *Saccharomyces pretoriensis*, *Saccharomyces rosei*, *Saccharomyces rouxii*, *Saccharomyces uvarum*, *Saccharomycodes ludwigii*, *Yarrowia lipolytica*, *Schizosaccharomycetaceae* such as the genera *Schizosaccharomyces* e.g. the species *Schizosaccharomyces japonicus* var. *japonicus*, *Schizosaccharomyces japonicus* var. *versatilis*, *Schizosaccharomyces malidevorans*, *Schizosaccharomyces octosporus*, *Schizosaccharomyces pombe* var. *malidevorans*, *Schizosaccharomyces pombe* var. *pombe*, *Thraustochytriaceae* such as the genera *Althornia*, *Aplanochytrium*, *Japonochytrium*, *Schizochytrium*, *Thraustochytrium* e.g. the species *Schizochytrium aggregatum*, *Schizochytrium limacinum*, *Schizochytrium mangrovei*, *Schizochytrium minutum*, *Schizochytrium octosporum*, *Thraustochytrium aggregatum*, *Thraustochytrium amoeboides*, *Thraustochytrium antacticum*, *Thraustochytrium arudimentale*, *Thraustochytrium aureum*, *Thraustochytrium benthicola*, *Thraustochytrium globosum*, *Thraustochytrium indicum*, *Thraustochytrium kerguelense*, *Thraustochytrium kinnei*, *Thraustochytrium motivum*, *Thraustochytrium multirudimentale*, *Thraustochytrium pachydermum*, *Thraustochytrium proliferum*, *Thraustochytrium roseum*, *Thraustochytrium rossii*, *Thraustochytrium striatum* or *Thraustochytrium visurgense*.

[0136] Further advantageous microorganisms are, for example, bacteria selected from the group of the families *Bacillaceae*, *Enterobacteriaceae* or *Rhizobiaceae*.

[0137] Examples which may be mentioned are the following microorganisms selected from the group consisting of: *Bacillaceae*, such as the genus *Bacillus*, for example the genera and species *Bacillus acidocaldarius*, *Bacillus acidoterrestris*, *Bacillus alcalophilus*, *Bacillus amyloliquefaciens*, *Bacillus amylolyticus*, *Bacillus brevis*, *Bacillus cereus*, *Bacillus circulans*, *Bacillus coagulans*, *Bacillus sphaericus* subsp. *fusiformis*, *Bacillus galactophilus*, *Bacillus globisporus*, *Bacillus globisporus* subsp. *marinus*, *Bacillus halophilus*, *Bacillus lentimorbus*, *Bacillus lentus*, *Bacillus licheniformis*, *Bacillus megaterium*, *Bacillus polymyxa*, *Bacillus psychrosaccharolyticus*, *Bacillus pumilus*, *Bacillus sphaericus*, *Bacillus subtilis* subsp. *spizizenii*, *Bacillus subtilis* subsp. *subtilis* or *Bacillus thuringiensis*; *Enterobacteriaceae* such as the genera *Citrobacter*, *Edwardsiella*, *Enterobacter*, *Erwinia*, *Escherichia*, *Klebsiella*, *Salmonella* or *Serratia*, for example the genera and species *Citrobacter amalonaticus*, *Citrobacter diversus*, *Citrobacter freundii*, *Citrobacter genomospecies*, *Citrobacter gillenii*, *Citrobacter intermedium*, *Citrobacter koseri*, *Citrobacter murliniae*, *Citrobacter sp.*, *Edwardsiella hoshinae*, *Edwardsiella ictaluri*, *Edwardsiella tarda*, *Erwinia alni*, *Erwinia amylovora*, *Erwinia ananatis*, *Erwinia aphidicola*, *Erwinia billingiae*, *Erwinia cacticida*, *Erwinia can-*

cerogena, *Erwinia carnegieana*, *Erwinia carotovora* subsp. *atroseptica*, *Erwinia carotovora* subsp. *betavasculorum*, *Erwinia carotovora* subsp. *odorifera*, *Erwinia carotovora* subsp. *wasabiae*, *Erwinia chrysanthemi*, *Erwinia cypripedii*, *Erwinia dissolvens*, *Erwinia herbicola*, *Erwinia mallotivora*, *Erwinia milletiae*, *Erwinia nigrifluens*, *Erwinia nimipressuralis*, *Erwinia persicina*, *Erwinia psidii*, *Erwinia pyrifoliae*, *Erwinia quercina*, *Erwinia rhapontici*, *Erwinia rubrifaciens*, *Erwinia salicis*, *Erwinia stewartii*, *Erwinia tracheiphila*, *Erwinia uredovora*, *Escherichia adecarboxylata*, *Escherichia anindolica*, *Escherichia aurescens*, *Escherichia blattae*, *Escherichia coli*, *Escherichia coli* var. *communior*, *Escherichia coli-mutabile*, *Escherichia fergusonii*, *Escherichia hermannii*, *Escherichia* sp., *Escherichia vulneris*, *Klebsiella aerogenes*, *Klebsiella edwardsii* subsp. *atlantae*, *Klebsiella omithinolytica*, *Klebsiella oxytoca*, *Klebsiella planticola*, *Klebsiella pneumoniae*, *Klebsiella pneumoniae* subsp. *pneumoniae*, *Klebsiella* sp., *Klebsiella terrigena*, *Klebsiella trevisanii*, *Salmonella abony*, *Salmonella arizonae*, *Salmonella bongori*, *Salmonella choleraesuis* subsp. *arizonae*, *Salmonella cholerae* subsp. *bongori*, *Salmonella cholerae* subsp. *choleraesuis*, *Salmonella choleraesuis* subsp. *diarizonae*, *Salmonella choleraesuis* subsp. *houtenae*, *Salmonella choleraesuis* subsp. *indica*, *Salmonella choleraesuis* subsp. *salamae*, *Salmonella daessalaam*, *Salmonella enterica* subsp. *houtenae*, *Salmonella enterica* subsp. *salamae*, *Salmonella enteritidis*, *Salmonella gallinarum*, *Salmonella heidelberg*, *Salmonella panama*, *Salmonella senftenberg*, *Salmonella typhimurium*, *Serratia entomophila*, *Serratia ficaria*, *Serratia fonticola*, *Serratia grimesii*, *Serratia liquefaciens*, *Serratia marcescens*, *Serratia marcescens* subsp. *marcescens*, *Serratia marinorubra*, *Serratia odorifera*, *Serratia plymuthensis*, *Serratia plymuthica*, *Serratia proteamaculans*, *Serratia proteamaculans* subsp. *quinovora*, *Serratia quinivorans* or *Serratia rubidaea*; Rhizobiaceae, such as the genera *Agrobacterium*, *Carbophilus*, *Chelatobacter*, *Ensifer*, *Rhizobium*, *Sinorhizobium*, for example the genera and species *Agrobacterium atlanticum*, *Agrobacterium ferrugineum*, *Agrobacterium gelatinovorum*, *Agrobacterium larrymoorei*, *Agrobacterium meteori*, *Agrobacterium radiobacter*, *Agrobacterium rhizogenes*, *Agrobacterium rubi*, *Agrobacterium stellulatum*, *Agrobacterium tumefaciens*, *Agrobacterium vitis*, *Carbophilus carboxidus*, *Chelatobacter heintzii*, *Ensifer adhaerens*, *Ensifer arboris*, *Ensifer fredii*, *Ensifer kostiensis*, *Ensifer kummerowiae*, *Ensifer medicae*, *Ensifer meliloti*, *Ensifer sahari*, *Ensifer terangae*, *Ensifer xinjiangensis*, *Rhizobium ciceri*, *Rhizobium etli*, *Rhizobium fredii*, *Rhizobium galegae*, *Rhizobium gallicum*, *Rhizobium giardinii*, *Rhizobium hainanense*, *Rhizobium huakuii*, *Rhizobium huautlense*, *Rhizobium indigoferae*, *Rhizobium japonicum*, *Rhizobium leguminosarum*, *Rhizobium loessense*, *Rhizobium loti*, *Rhizobium lupini*, *Rhizobium mediterraneum*, *Rhizobium meliloti*, *Rhizobium mongolense*, *Rhizobium phaseoli*, *Rhizobium radiobacter*, *Rhizobium rhizogenes*, *Rhizobium rubi*, *Rhizobium sullae*, *Rhizobium tianshanense*, *Rhizobium trifolii*, *Rhizobium tropici*, *Rhizobium undicola*, *Rhizobium vitis*, *Sinorhizobium adhaerens*, *Sinorhizobium arboris*, *Sinorhizobium fredii*, *Sinorhizobium kostiensis*, *Sinorhizobium kummerowiae*, *Sinorhizobium medicae*, *Sinorhizobium meliloti*, *Sinorhizobium morelense*, *Sinorhizobium sahari* or *Sinorhizobium xinjiangense*.

[0138] Further examples of advantageous microorganisms for the process according to the invention are protists or

diatoms selected from the group of the families Dinophyceae, Turaniellidae or Oxytrichidae, such as the genera and species: *Cryptocodinium cohnii*, *Phaeodactylum tricomutum*, *Stylonychia mytilus*, *Stylonychia pustulata*, *Stylonychia putrina*, *Stylonychia notophora*, *Stylonychia* sp., *Colpidium campyllum* or *Colpidium* sp.

[0139] Those which are advantageously applied in the process according to the invention are transgenic organisms such as fungi, such as *mortierella* or *thraustochytrium*, yeasts such as *Saccharomyces* or *Schizosaccharomyces*, mosses such as *Physcomitrella* or *Ceratodon*, nonhuman animals such as *Caenorhabditis*, algae such as *Nephroselmis*, *Pseudoscourfielda*, *Prasinococcus*, *Scherffelia*, *Tetraselmis*, *Mantoniella*, *Ostreococcus*, *Cryptocodinium* or *Phaeodactylum* or plants such as dicotyledonous or monocotyledonous plants. Organisms which are especially advantageously used in the process according to the invention are organisms which belong to the oil-producing organisms, that is to say which are used for the production of oil, such as fungi, such as *Mortierella* or *Thraustochytrium*, algae such as *Nephroselmis*, *Pseudoscourfielda*, *Prasinococcus*, *Scherffelia*, *Tetraselmis*, *Mantoniella*, *Ostreococcus*, *Cryptocodinium*, *Phaeodactylum*, or plants, in particular plants, preferably oilseed or oil crop plants which comprise large amounts of lipid compounds, such as peanut, oilseed rape, canola, sunflower, safflower (*Carthamus tinctoria*), poppy, mustard, hemp, castor-oil plant, olive, sesame, *Calendula*, *Punica*, evening primrose, verbascum, thistle, wild roses, hazelnut, almond, macadamia, avocado, bay, pumpkin/squash, linseed, soybean, pistachios, borage, trees (oil palm, coconut or walnut) or arable crops such as maize, wheat, rye, oats, triticale, rice, barley, cotton, cassava, pepper, Tagetes, Solanaceae plants such as potato, tobacco, eggplant and tomato, *Vicia* species, pea, alfalfa or bushy plants (coffee, cacao, tea), *Salix* species, and perennial grasses and fodder crops. Preferred plants according to the invention are oil crop plants such as peanut, oilseed rape, canola, sunflower, safflower, poppy, mustard, hemp, castor-oil plant, olive, *Calendula*, *Punica*, evening primrose, pumpkin/squash, linseed, soybean, borage, trees (oil palm, coconut). Especially preferred for the process are plants which are high in C18:2-fatty acids, such as sunflower, safflower, tobacco, verbascum, sesame, cotton, pumpkin/squash, poppy, evening primrose, walnut, linseed, hemp or thistle. Very especially preferred plants are plants such as safflower, sunflower, poppy, evening primrose, walnut, linseed or hemp.

[0140] It is also be advantageous for the above-described method according to the invention additionally to introduce, into the organism, further nucleic acids which encode enzymes of the fatty acid or lipid metabolism, in addition to the nucleic acids of the first to fourth aspects of the invention.

[0141] Such nucleic acids are advantageously derived from plants such as algae, for example algae of the family of the Prasinophyceae such as the genera *Heteromastix*, *Mammella*, *Mantoniella*, *Micromonas*, *Nephroselmis*, *Ostreococcus*, *Prasinocladus*, *Prasinococcus*, *Pseudoscourfielda*, *Pycnococcus*, *Pyramimonas*, *Scherffelia* or *Tetraselmis* such as the genera and species *Heteromastix longifilis*, *Mamiella gilva*, *Mantoniella squamata*, *Micromonas pusilla*, *Nephroselmis olivacea*, *Nephroselmis pyriformis*, *Nephroselmis rotunda*, *Ostreococcus tauri*, *Ostreococcus* sp. *Prasinocladus ascus*, *Prasinocladus lubricus*, *Pycnococcus provasolii*, *Pyramimonas amylifera*, *Pyramimonas disomata*, *Pyramimonas obovata*, *Pyramimonas orientalis*, *Pyramimonas parkeae*, *Pyramimonas spinifera*, *Pyramimonas* sp., *Tetraselmis api-*

culata, *Tetraselmis carteriformis*, *Tetraselmis chui*, *Tetraselmis convolutae*, *Tetraselmis desikacharyi*, *Tetraselmis gracilis*, *Tetraselmis hazeni*, *Tetraselmis impellucida*, *Tetraselmis inconspicua*, *Tetraselmis levis*, *Tetraselmis maculata*, *Tetraselmis marina*, *Tetraselmis striata*, *Tetraselmis subcordiformis*, *Tetraselmis suecica*, *Tetraselmis tetrabrachia*, *Tetraselmis tetrathele*, *Tetraselmis verrucosa*, *Tetraselmis verrucosa* fo. *rubens* or *Tetraselmis* sp. or from algae of the family Euglenaceae such as the genera *Ascoglena*, *Astasia*, *Colacium*, *Cyclidiopsis*, *Euglena*, *Euglenopsis*, *Hyalophacus*, *Khawkinea*, *Lepocinclis*, *Phacus*, *Strombomonas* or *Trachelomonas*, such as the genera and species *Euglena acus*, *Euglena geniculata*, *Euglena gracilis*, *Euglena mixocylindracea*, *Euglena rostrifera*, *Euglena viridis*, *Colacium sten-torium*, *Trachelomonas cylindrica* or *Trachelomonas volvocina*. The nucleic acids used are advantageously derived from algae of the genera *Euglena*, *Mantoniella* or *Ostreococcus*.

[0142] Further advantageous plants are algae such as *Isochrysis* or *Cryptocodinium*, algae/diatoms such as *Thalassiosira* or *Phaeodactylum*, mosses such as *Physcomitrella* or *Ceratodon*, or higher plants such as the Primulaceae such as *Aleuritia*, *Calendula stellata*, *Osteospermum spinescens* or *Osteospermum hyoseroides*, microorganisms such as fungi, such as *Aspergillus*, *Thraustochytrium*, *Phytophthora*, *Entomophthora*, *Mucor* or *Mortierella*, bacteria such as *Shewanella*, yeasts or animals such as nematodes such as *Caenorhabditis*, insects, frogs, abalone, or fish. The isolated nucleic acid sequences according to the invention are advantageously derived from an animal of the order of the vertebrates. Preferably, the nucleic acid sequences are derived from the classes of the Vertebrata; *Euteleostomi*, *Actinopterygii*; *Neopterygii*; *Teleostei*; *Euteleostei*, *Protacanthopterygii*, *Salmoniformes*; *Salmonidae* or *Oncorhynchus* or *Vertebrata*, *Amphibia*, *Anura*, *Pipidae*, *Xenopus* or *Evertebrata* such as *Protochordata*, *Tunicata*, *Holothuroidea*, *Cionidae* such as *Amaroucium constellatum*, *Botryllus schlosseri*, *Ciona intestinalis*, *Molgula citrina*, *Molgula manhattensis*, *Perophora viridis* or *Styela partita*. The nucleic acids are especially advantageously derived from fungi, animals, or from plants such as algae or mosses, preferably from the order of the Salmoniformes, such as the family of the Salmonidae, such as the genus *Salmo*, for example from the genera and species *Oncorhynchus mykiss*, *Trutta trutta* or *Salmo trutta fario*, from algae, such as the genera *Mantoniella* or *Ostreococcus*, or from the diatoms such as the genera *Thalassiosira* or *Phaeodactylum* or from algae such as *Cryptocodinium*.

[0143] In a preferred embodiment, the process furthermore comprises the step of obtaining a cell or an intact organism which comprises the nucleic acid sequences used in the process, where the cell and/or the organism is transformed with a nucleic acid sequence according to the invention which encodes the $\Delta 9$ -elongase, $\Delta 8$ -desaturase and/or the $\Delta 5$ -desaturase, a gene construct or a vector as described above, alone or in combination with further nucleic acid sequences which encode proteins of the fatty acid or lipid metabolism. In a further preferred embodiment, this process furthermore comprises the step of obtaining the oils, lipids or free fatty acids from the organism or from the culture. The culture can, for example, take the form of a fermentation culture, for example in the case of the cultivation of microorganisms, such as, for example, *Mortierella*, *Thalassiosira*, *Mantoniella*, *Ostreococcus*, *Saccharomyces* or *Thraustochytrium*, or a greenhouse- or field-grown culture of a plant. The cell or

the organism produced thus is advantageously a cell of an oil-producing organism, such as an oil crop, such as, for example, peanut, oilseed rape, canola, linseed, hemp, peanut, soybean, safflower, hemp, sunflowers or borage.

[0144] In the case of plant cells, plant tissue or plant organs, "growing" is understood as meaning, for example, the cultivation on or in a nutrient medium, or of the intact plant on or in a substrate, for example in a hydroponic culture, potting compost or on arable land.

[0145] For the purposes of the invention, "transgenic" or "recombinant" means with regard to, for example, a nucleic acid sequence, an expression cassette (=gene construct) or a vector comprising the nucleic acid sequence or an organism transformed with the nucleic acid sequences, expression cassettes or vectors according to the invention, all those constructions brought about by recombinant methods in which either

[0146] a) the nucleic acid sequence according to the invention, or

[0147] b) a genetic control sequence which is operably linked with the nucleic acid sequence according to the invention, for example a promoter, or

[0148] c) a) and b)

are not located in their natural genetic environment or have been modified by recombinant methods, it being possible for the modification to take the form of, for example, a substitution, addition, deletion, inversion or insertion of one or more nucleotide residues. The natural genetic environment is understood as meaning the natural genomic or chromosomal locus in the original organism or the presence in a genomic library. In the case of a genomic library, the natural genetic environment of the nucleic acid sequence is preferably retained, at least in part. The environment flanks the nucleic acid sequence at least on one side and has a sequence length of at least 50 bp, preferably at least 500 bp, especially preferably at least 1000 bp, most preferably at least 5000 bp. A naturally occurring expression cassette—for example the naturally occurring combination of the natural promoter of the nucleic acid sequences with the corresponding $\Delta 5$ -desaturase gene—becomes a transgenic expression cassette when this expression cassette is modified by non-natural, synthetic ("artificial") methods such as, for example, mutagenic treatment. Suitable methods are described, for example, in U.S. Pat. No. 5,565,350 or WO 00/15815.

[0149] A transgenic organism or transgenic plant for the purposes of the invention is therefore understood as meaning, as above, that the nucleic acids used in the process are not at their natural locus in the genome of an organism, it being possible for the nucleic acids to be expressed homologously or heterologously. However, as mentioned, transgenic also means that, while the nucleic acids according to the invention are at their natural position in the genome of an organism, the sequence has been modified with regard to the natural sequence, and/or that the regulatory sequences of the natural sequences have been modified. Transgenic is preferably understood as meaning the expression of the nucleic acids according to the invention at an unnatural locus in the genome, i.e. homologous or, preferably, heterologous expression of the nucleic acids takes place. Preferred transgenic organisms are fungi such as *Mortierella* or *Phytophthora*, mosses such as *Physcomitrella*, algae such as *Mantoniella*, *Euglena*, *Cryptocodinium* or *Ostreococcus*, diatoms such as *Thalassiosira* or *Phaeodactylum*, or plants such as the oil crops.

[0150] Organisms or host organisms for the nucleic acids, the expression cassette or the vector used in the process according to the invention are, in principle, advantageously all organisms which are capable of synthesizing fatty acids, specifically unsaturated fatty acids, and/or which are suitable for the expression of recombinant genes. Examples which may be mentioned are plants such as *Arabidopsis*, Asteraceae such as *Calendula* or crop plants such as soybean, peanut, castor-oil plant, sunflower, maize, cotton, flax, oilseed rape, coconut, oil palm, safflower (*Carthamus tinctorius*) or cacao bean, microorganisms, such as fungi, for example the genus *Mortierella*, *Thraustochytrium*, *Saprolegnia*, *Phytophthora* or *Pythium*, bacteria, such as the genus *Escherichia* or *Shewanella*, yeasts, such as the genus *Saccharomyces*, cyanobacteria, ciliates, algae such as *Mantoniella*, *Euglena*, *Thalassiosira* or *Ostreococcus*, or protozoans such as dinoflagellates, such as *Cryptocodinium*. Preferred organisms are those which are naturally capable of synthesizing substantial amounts of oil, such as fungi, such as *Mortierella alpina*, *Pythium insidiosum*, *Phytophthora infestans*, or plants such as soybean, oilseed rape, coconut, oil palm, safflower, flax, hemp, castor-oil plant, *Calendula*, peanut, cacao bean or sunflower, or yeasts such as *Saccharomyces cerevisiae* with soybean, flax, oilseed rape, safflower, sunflower, *Calendula*, *Mortierella* or *Saccharomyces cerevisiae* being especially preferred. In principle, host organisms are, in addition to the abovementioned transgenic organisms, also transgenic animals, advantageously nonhuman animals, for example *C. elegans*, *Ciona intestinalis* or *Xenopus laevis*.

[0151] Further utilizable host cells are detailed in: Goeddel, Gene Expression Technology: Methods in Enzymology 185, Academic Press, San Diego, Calif. (1990).

[0152] Expression strains which can be used, for example those with a lower protease activity, are described in: Gottesman, S., Gene Expression Technology: Methods in Enzymology 185, Academic Press, San Diego, Calif. (1990) 119-128.

[0153] These include plant cells and certain tissues, organs and parts of plants in all their phenotypic forms such as anthers, fibers, root hairs, stalks, embryos, calli, cotyledons, petioles, harvested material, plant tissue, reproductive tissue and cell cultures which are derived from the actual transgenic plant and/or can be used for bringing about the transgenic plant.

[0154] Transgenic plants which comprise the polyunsaturated fatty acids synthesized in the process according to the invention can advantageously be marketed directly without there being any need for the oils, lipids or fatty acids synthesized to be isolated. Plants for the process according to the invention are listed as meaning intact plants and all plant parts, plant organs or plant parts such as leaf, stem, seeds, root, tubers, anthers, fibers, root hairs, stalks, embryos, calli, cotyledons, petioles, harvested material, plant tissue, reproductive tissue and cell cultures which are derived from the actual transgenic plant and/or can be used for bringing about the transgenic plant. In this context, the seed comprises all parts of the seed such as the seed coats, epidermal cells, seed cells, endosperm or embryonic tissue. However, the compounds produced in the process according to the invention can also be isolated from the organisms, advantageously plants, in the form of their oils, fats, lipids and/or free fatty acids. Polyunsaturated fatty acids produced by this process can be obtained by harvesting the organisms, either from the crop in which they grow, or from the field. This can be done via pressing or extraction of the plant parts, preferably the

plant seeds. In this context, the oils, fats, lipids and/or free fatty acids can be obtained by what is known as cold-beating or cold-pressing without applying heat. To allow for greater ease of disruption of the plant parts, specifically the seeds, they are previously comminuted, steamed or roasted. The seeds which have been pretreated in this manner can subsequently be pressed or extracted with solvents such as warm hexane. The solvent is subsequently removed. In the case of microorganisms, the latter are, after harvesting, for example extracted directly without further processing steps or else, after disruption, extracted via various methods with which the skilled worker is familiar. In this manner, more than 96% of the compounds produced in the process can be isolated. Thereafter, the resulting products are processed further, i.e. refined. In this process, substances such as the plant mucilages and suspended matter are first removed. What is known as desliming can be effected enzymatically or, for example, chemico-physically by addition of acid such as phosphoric acid. Thereafter, the free fatty acids are removed by treatment with a base, for example sodium hydroxide solution. The resulting product is washed thoroughly with water to remove the alkali remaining in the product and then dried. To remove the pigment remaining in the product, the products are subjected to bleaching, for example using filler's earth or active charcoal. At the end, the product is deodorized, for example using steam.

[0155] The fatty acids produced by the processes of the present invention can be isolated from the organism in the form of an oil, a lipid or a free fatty acid. Suitable organisms are, for example, those mentioned above. Preferred organisms are transgenic plants.

[0156] One embodiment of the invention is therefore oils, lipids or fatty acids of formula I or fractions thereof which have been produced by the above-described process, especially preferably oil, lipid or a fatty acid composition comprising a compound of formula I and being derived from transgenic plants.

[0157] A further embodiment according to the invention is the use of the oil, lipid, the fatty acids and/or the fatty acid composition in feedstuffs, foodstuffs, cosmetics or pharmaceuticals. The oils, lipids, fatty acids or fatty acid mixtures according to the invention can be used in the manner with which the skilled worker is familiar for mixing with other oils, lipids, fatty acids or fatty acid mixtures of animal origin, such as, for example, fish oils. These oils, lipids, fatty acids or fatty acid mixtures, which are composed of vegetable and animal constituents, may also be used for the preparation of feedstuffs, foodstuffs, cosmetics or pharmacologicals.

[0158] The term "oil", "lipid" or "fat" is understood as meaning a fatty acid mixture comprising unsaturated, saturated, preferably esterified, fatty acid(s). The oil, lipid or fat is preferably high in polyunsaturated free or, advantageously, esterified fatty acid(s), in particular linoleic acid, γ -linolenic acid, dihomo- γ -linolenic acid, arachidonic acid, α -linolenic acid, stearidonic acid, eicosatetraenoic acid, eicosapentaenoic acid, docosapentaenoic acid or docosahexaenoic acid.

[0159] The amount of unsaturated esterified fatty acids preferably amounts to approximately 30%, a content of 50% is more preferred, a content of 60%, 70%, 80% or more is even more preferred. For the analysis, the fatty acid content can, for example, be determined by gas chromatography after converting the fatty acids into the methyl esters by transesterification. The oil, lipid or fat can comprise various other

saturated or unsaturated fatty acids, for example calendulic acid, palmitic acid, palmitoleic acid, stearic acid, oleic acid and the like. The content of the various fatty acids in the oil or fat can vary, in particular depending on the starting organism.

[0160] The ARA produced in the process may be, as described above, in the form of fatty acid derivatives, for example sphingolipids, phosphoglycerides, lipids, glycolipids, phospholipids, monoacylglycerol, diacylglycerol, triacylglycerol or other fatty acid esters.

[0161] The ARA and other polyunsaturated fatty acids which are present can be liberated for example via treatment with alkali, for example aqueous KOH or NaOH, or acid hydrolysis, advantageously in the presence of an alcohol such as methanol or ethanol, or via enzymatic cleavage, and isolated via, for example, phase separation and subsequent acidification via, for example, H_2SO_4 . The fatty acids can also be liberated directly without the above-described processing step.

[0162] After their introduction into an organism, advantageously a plant cell or plant, the nucleic acids used in the process can either be present on a separate plasmid or, advantageously, integrated into the genome of the host cell. In the case of integration into the genome, integration can be random or else be effected by recombination such that the native gene is replaced by the copy introduced, whereby the production of the desired compound by the cell is modulated, or by the use of a gene in trans, so that the gene is linked operably with a functional expression unit which comprises at least one sequence which ensures the expression of a gene and at least one sequence which ensures the polyadenylation of a functionally transcribed gene. The nucleic acids are advantageously introduced into the organisms via multiexpression cassettes or constructs for multiparallel expression, advantageously into the plants for the multiparallel seed-specific expression of genes.

[0163] If microorganisms such as yeasts, such as *Saccharomyces* or *Schizosaccharomyces*, fungi such as *Mortierella*, *Aspergillus*, *Phytophthora*, *Entomophthora*, *Mucor* or *Thraustochytrium*, algae such as *Isochrysis*, *Mantoniella*, *Euglena*, *Ostreococcus*, *Phaeodactylum* or *Cryptocodinium* are used as organisms in the process according to the invention, these organisms are advantageously grown in fermentation cultures.

[0164] If microorganisms are used as organisms in the process according to the invention, they are grown or cultured in the manner with which the skilled worker is familiar, depending on the host organism. As a rule, microorganisms are grown in a liquid medium comprising a carbon source, usually in the form of sugars, a nitrogen source, usually in the form of organic nitrogen sources such as yeast extract or salts such as ammonium sulfate, trace elements such as salts of iron, manganese and magnesium and, if appropriate, vitamins, at temperatures of between 0° C. and 100° C., preferably between 10° C. and 60° C., while passing in oxygen. The pH of the liquid medium can either be kept constant, that is to say regulated during the culturing period, or not. The cultures can be grown batchwise, semi-batchwise or continuously. Nutrients can be provided at the beginning of the fermentation or fed in semicontinuously or continuously. The polyunsaturated fatty acids produced can be isolated from the organisms as described above by processes known to the skilled worker, for example by extraction, distillation, crystalliza-

tion, if appropriate precipitation with salt, and/or chromatography. To this end, the organisms can advantageously be disrupted beforehand.

[0165] If the host organisms are microorganisms, the process according to the invention is advantageously carried out at a temperature of between 0° C. and 95° C., preferably between 10° C. and 85° C., especially preferably between 15° C. and 75° C., very especially preferably between 15° C. and 45° C.

[0166] In this process, the pH value is advantageously kept between pH 4 and 12, preferably between pH 6 and 9, especially preferably between pH 7 and 8.

[0167] The process according to the invention can be operated batchwise, semibatchwise or continuously. An overview over known cultivation methods can be found in the textbook by Chmiel (Bioprozeßtechnik 1. Einführung in die Bioverfahrenstechnik [Bioprocess technology 1. Introduction to Bioprocess technology] (Gustav Fischer Verlag, Stuttgart, 1991)) or in the textbook by Storhas (Bioreaktoren und periphere Einrichtungen [Bioreactors and peripheral equipment] (Vieweg Verlag, Braunschweig/Wiesbaden, 1994)).

[0168] The culture medium to be used must suitably meet the requirements of the strains in question. Descriptions of culture media for various microorganisms can be found in the textbook "Manual of Methods for General Bacteriology" of the American Society for Bacteriology (Washington D.C., USA, 1981).

[0169] As described above, these media which can be employed in accordance with the invention usually comprise one or more carbon sources, nitrogen sources, inorganic salts, vitamins and/or trace elements.

[0170] Preferred carbon sources are sugars, such as mono-, di- or polysaccharides. Examples of very good carbon sources are glucose, fructose, mannose, galactose, ribose, sorbose, ribulose, lactose, maltose, sucrose, raffinose, starch or cellulose. Sugars can also be added to the media via complex compounds such as molasses or other by-products from sugar refinement. The addition of mixtures of a variety of carbon sources may also be advantageous. Other possible carbon sources are oils and fats such as, for example, soya oil, sunflower oil, peanut oil and/or coconut fat, fatty acids such as, for example, palmitic acid, stearic acid and/or linoleic acid, alcohols and/or polyalcohols such as, for example, glycerol, methanol and/or ethanol, and/or organic acids such as, for example, acetic acid and/or lactic acid.

[0171] Nitrogen sources are usually organic or inorganic nitrogen compounds or materials comprising these compounds. Examples of nitrogen sources comprise ammonia in liquid or gaseous form or ammonium salts such as ammonium sulfate, ammonium chloride, ammonium phosphate, ammonium carbonate or ammonium nitrate, nitrates, urea, amino acids or complex nitrogen sources such as cornsteep liquor, soya meal, soya protein, yeast extract, meat extract and others. The nitrogen sources can be used individually or as a mixture.

[0172] Inorganic salt compounds which may be present in the media comprise the chloride, phosphorus and sulfate salts of calcium, magnesium, sodium, cobalt, molybdenum, potassium, manganese, zinc, copper and iron.

[0173] Inorganic sulfur-containing compounds such as, for example, sulfates, sulfites, dithionites, tetrathionates, thiosulfates, sulfides, or else organic sulfur compounds such as

mercaptans and thiols may be used as sources of sulfur for the production of sulfur-containing fine chemicals, in particular of methionine.

[0174] Phosphoric acid, potassium dihydrogen phosphate or dipotassium hydrogen phosphate or the corresponding sodium-containing salts may be used as sources of phosphorus.

[0175] Chelating agents may be added to the medium in order to keep the metal ions in solution. Particularly suitable chelating agents include dihydroxyphenols such as catechol or protocatechuic acid and organic acids such as citric acid.

[0176] The fermentation media used according to the invention for culturing microorganisms usually also comprise other growth factors such as vitamins or growth promoters, which include, for example, biotin, riboflavin, thiamine, folic acid, nicotinic acid, pantothenate and pyridoxine. Growth factors and salts are frequently derived from complex media components such as yeast extract, molasses, cornsteep liquor and the like. It is moreover possible to add suitable precursors to the culture medium. The exact composition of the media compounds heavily depends on the particular experiment and is decided upon individually for each specific case. Information on the optimization of media can be found in the textbook "Applied Microbiol. Physiology, A Practical Approach" (Editors P. M. Rhodes, P. F. Stanbury, IRL Press (1997) pp. 53-73, ISBN 0 19 963577 3). Growth media can also be obtained from commercial suppliers, for example Standard 1 (Merck) or BHI (brain heart infusion, DIFCO) and the like.

[0177] All media components are sterilized, either by heat (20 min at 1.5 bar and 121° C.) or by filter sterilization. The components may be sterilized either together or, if required, separately. All media components may be present at the start of the cultivation or added continuously or batchwise, as desired.

[0178] The culture temperature is normally between 15° C. and 45° C., preferably at from 25° C. to 40° C., and may be kept constant or may be altered during the experiment. The pH of the medium should be in the range from 5 to 8.5, preferably around 7.0. The pH for cultivation can be controlled during cultivation by adding basic compounds such as sodium hydroxide, potassium hydroxide, ammonia and aqueous ammonia or acidic compounds such as phosphoric acid or sulfuric acid. Foaming can be controlled by employing anti-foams such as, for example, fatty acid polyglycol esters. To maintain the stability of plasmids it is possible to add to the medium suitable substances having a selective effect, for example antibiotics. Aerobic conditions are maintained by introducing oxygen or oxygen-containing gas mixtures such as, for example, ambient air into the culture. The temperature of the culture is normally 20° to 40° C. and preferably 25° C. to 40° C. The culture is continued until formation of the desired product is at a maximum. This aim is normally achieved within 10 to 160 hours.

[0179] The fermentation broths obtained in this way, in particular those containing polyunsaturated fatty acids, usually contain a dry mass of from 7.5 to 25% by weight.

[0180] The fermentation broth can then be processed further. The biomass may, according to requirement, be removed completely or partially from the fermentation broth by separation methods such as, for example, centrifugation, filtration, decanting or a combination of these methods or be left completely in said broth. It is advantageous to process the biomass after its separation.

[0181] However, the fermentation broth can also be thickened or concentrated without separating the cells, using known methods such as, for example, with the aid of a rotary evaporator, thin-film evaporator, falling-film evaporator, by reverse osmosis or by nanofiltration. Finally, this concentrated fermentation broth can be processed to obtain the fatty acids present therein.

[0182] The fatty acids obtained in the process are also suitable as starting material for the chemical synthesis of further products of interest. For example, they can be used in combination with one another or alone for the preparation of pharmaceuticals, foodstuffs, animal feeds or cosmetics.

[0183] All of the nucleic acid sequences used in the process according to the invention are advantageously derived from a eukaryotic organism such as a plant, a microorganism or an animal. The nucleic acid sequences are preferably derived from the order Salmoniformes, algae such as *Mantoniella*, *Cryptocodinium*, *Euglena* or *Ostreococcus*, fungi such as the genus *Phytophthora* or from diatoms such as the genera *Thalassiosira* or *Phaeodactylum*.

[0184] The invention will now be described in greater detail with reference to the following Examples and to the drawings in which

[0185] FIG. 1 shows various synthetic pathways for the biosynthesis of ω -6 and ω -3 fatty acids.

[0186] FIG. 2 is a gas chromatography trace showing the conversion of Δ 9,12-18:2 (linoleic acid) to Δ 11,14-20:2 by heterologous expression of the *P. marinus* Δ 9-elongase sequence (SEQ ID NO: 1, residues 7668 to 9200) in yeast induced either by galactose (FIG. 2A) or glucose (FIG. 2B).

EXAMPLE 1

Cloning of a FAE1 Elongase from *Perkinsus marinus*

[0187] *Perkinsus marinus* is an oyster protozoan parasite capable of synthesizing saturated and unsaturated fatty acids including the essential fatty acid, arachidonic acid [20:4(n-6)]. *P. marinus* employs the delta-8 (Δ -8) desaturase pathway to synthesize arachidonic acid.

Materials and Methods.

[0188] Growth and Harvesting of *P. marinus*.

[0189] *Perkinsus marinus* meronts were cultivated at 28° C. in a medium prepared as described by La Peyre et al. (J Eukaryot Microbiol 1993; 40:304-10) and contained amino acids, nucleotides, carbohydrates, and vitamins, but no fetal bovine serum.

Nucleic Acid Manipulation and PCR-Based Cloning.

[0190] DNA was extracted from cells using a DNeasy DNA mini kit (Qiagen). DNA were amplified with primers specific to delta5 desaturase gene as follows: the reactions were heated to 95° C for 2 min followed by 35 cycles at 95° C for 1 min, 2 min at 52 and 72° C for 4 min, then a single step at 72° C for 5 min. PCR amplification products were cloned into TOPO vector (Invitrogen) and verified by sequencing. FAE elongase gene was amplified with gene-specific primers (Table I) designed to the 5' and 3' ends of the coding region, with restriction sites to facilitate cloning into the yeast vector (Table I). Forward primers for cloning into yeast expression

vector pYES2 (Invitrogen) were designed to contain a G/A at position -3 and a G at position +4 to improve translation initiation in eukaryotic cells.

Oligonucleotide Primers Used in this Study.

[0191] Transcripts of *Perkinsus marinus* were analyzed by reverse transcriptase PCR (RT-PCR). Total RNA was extracted from cells using an RNeasy plant mini kit (Qiagen). First strand cDNA was synthesised from total RNA using the SMART RACE cDNA Amplification kit (BD-Clontech, Basingstoke, UK) according to the manufacture's instructions. Single-stranded cDNAs were amplified with following primers.

FAEoperon forward
5' -GGAATTCGAGGAGTAGGATCTTATCTGAGGATAGTCACACTAGTCGT

ACT-3'

FAEoperon reverse
5' -CATCTGCGAATACTAACCATACATT

[0192] The reactions were heated to 95 C for 2 min followed by 30 cycles at 94 C for 30 s, 30 at temperatures ranging from 55 to 72 according to the primer design and 72 C for 2 min, then a single step at 72 C for 10 min. PCR amplification products were cloned into TOPO vector (Invitrogen) and verified by sequencing. Surprisingly it was shown that the transcripts of the $\Delta 9$ -elongase, $\Delta 8$ -desaturase and $\Delta 5$ -desaturase are all found on the same mRNA. This is the first example showing PUFA genes to be organized in an operon-like structure.

[0193] In a further investigation the specificity of the $\Delta 9$ -elongase was analyzed. For this purpose the coding sequence of this gene was amplified by RT-PCR as described above using following primers.

Elo2For: 5' -ATGCAAGTTCCTCGGAGCATCACTCC-3'

Elo2Rev: 5' -CGTTACGCATCAATATTATGCATAGCCAACC-3'

[0194] The amplified PCR product was then cloned into a pCRscript vector according to manufacture's recommendations (Stratagen). In a second PCR step the modified sequences for yeast expression were introduced using following primers.

Yeast Expression.

[0195]

Kpn Elo2For 5' -TTGGTACCATGGGATTTCTGCGGAG-3'

Sac Elo1Rev 5' -GGGAGCTCTTACGCATCAATATTATGCATAGC-3'

[0196] Sequence of the primers is given in the 5' to 3' orientation Restriction sites used for cloning are in bold.

Results

[0197] Isolation of FAE1 Elongase from *P. marinus*.

[0198] Using publicly available data derived from an *P. marinus* genome sequencing project carried out by TIGR (<http://www.tigr.org/tdb/e2k1/pmg/>) we identified one contig (1047306867) which showed significant homology to known elongases, with the target sequence (designated Elo1For, SEQ ID NO: 9) consisting of an open reading frame of 511 residues and no introns. The putative amino acid derived from the target sequence is SEQ ID NO: 10.

Functional Characterisation in *Saccharomyces cerevisiae*.

[0199] The full-length cDNA corresponding to putative $\Delta 9$ fatty acid elongase (SEQ ID NO: 9) was cloned into yeast expression vector pYES2 to give a construct designated pYPmFAE. *S. cerevisiae* strain W303-1A was transformed with the pYPmFAE or the empty vector as a control. Transformed cell were grown in a minimal medium containing raffinose and induced with 2% galactose. After 48 h of growth total yeast fatty acids were extracted and the resulting FAMES analysed by GC.

[0200] GC analysis (FIG. 2) revealed that yeast cells transformed with pYPmFAE produced an additional fatty acid, which was identified as eicosadienoic acid indicating that the gene we had cloned encoded a delta 9 fatty acid elongase. Yeast cells expressing the *P. marinus* delta 9 fatty acid elongase is capable of recognizing C18:2 (c9,12) substrate with a 8.2% percentage of conversion rate.

[0201] Table 1 shows the fatty acid content of the yeast cells after transformation with pYPmFAE (+) or with the empty vector pYES2 (-) and induction with 2% galactose. The percentage conversion for 18:2 ^{$\Delta 9,12$} to 20:2 ^{$\Delta 11,14$} , for example is calculated by the equation:

$$\% \text{ conversion} = \frac{[20:2^{\Delta 11,14}]}{[18:2^{\Delta 9,12}] + [20:2^{\Delta 11,14}]}$$

TABLE 1

	FATTY ACIDS										%
%	16:0	16:1 ^{Δ9}	18:0	18:1 ^{Δ9}	18:2 ^{Δ9,12}	20:2 ^{Δ11,14}	18:3 ^{Δ6,9,12}	20:3 ^{Δ8,11,14}	20:4 ^{Δ5,8,11,14}	22:4 ^{Δ7,10,13,18}	conv
FAE 18:2+	19.05	22.79	5.15	12.54	37.14	3.33	0.00	0.00	0.00	0.00	8.2
FAE 18:2−	20.81	19.50	5.50	12.11	42.07	0.00	0.00	0.00	0.00	0.00	0.0
FAE 18:3+	18.86	19.77	4.81	11.15	0.00	0.00	44.93	0.48	0.00	0.00	1.1
FAE 18:3−	20.35	18.15	4.84	10.33	0.00	0.00	46.27	0.07	0.00	0.00	0.1
FAE 20:4+	20.84	31.09	5.48	15.91	0.00	0.00	0.00	0.00	26.68	0.00	0.0
FAE 20:4−	22.13	31.00	4.55	14.65	0.00	0.00	0.00	0.00	27.67	0.00	0.0

[0202] The results presented in Table 1 show that no elongase activity was detected with 20:4^{Δ5,8,11,14}, and a minimal activity (1% conversion) for 18:3^{Δ6,9,12}. It therefore appears that the Δ9 fatty acid elongase is selective for linoleic acid and does not act to elongate other PUFAs.

SEQUENCE LISTING

<160> NUMBER OF SEQ ID NOS: 12

<210> SEQ ID NO 1

<211> LENGTH: 18342

<212> TYPE: DNA

<213> ORGANISM: Perkinsus marinus

<220> FEATURE:

<221> NAME/KEY: CDS

<222> LOCATION: (7668)..(9200)

<220> FEATURE:

<221> NAME/KEY: CDS

<222> LOCATION: (9351)..(10724)

<220> FEATURE:

<221> NAME/KEY: CDS

<222> LOCATION: (10842)..(12077)

<400> SEQUENCE: 1

```
tctaagacat catacctaca gtggcttcat ctactgtgat ggttatgatg atgacgacga      60
attcagagtt gaaaaaggaa tttgaggtca gcgatgggtga gtttctcgag ggctccattg    120
aagttaccgc cgatagtgcc atcgaagatc aattgcttct tctcctgtaa caggaaatga     180
tcatactcgc agtatccaag gaaaactgta tcgcccgggg acgttgatct ctattagctc     240
aggtttcgtg tagagttgag tcattagata aataaattcc atgaagccaa ggtagtgtta     300
cctggagagc cttgatctgc tectcgatgg tgttctcgga gataagatgg tgactcctca     360
caatctgctg ctgtctctaga cgggtggcaac gctgtatggc ctgcttctct acggccgggt    420
tccaccatgg atctatacag gagtatacca ccctacgtgg gccagcgcag tctcaccgag     480
tatgaagacg tgactcgccc tttggagggt caacccttca ccaccagcgg aaatcgatac     540
cagcaggagg ctgcagtccg acgctggcga ctgatatagc agaccagggt caagatcaca     600
acacagacat ctcccacctc gatgaaagcc cggatgatcc tgggtgcgaac ggcgaggggt    660
atcgatccgt ggatgatctg aggacagtag acactcgacg agctactgta cgtattttca     720
tggttaacga taaccgagag atctgcctta cgaaagtgct aatccctctg gctttgaggt     780
ggatttgtga gagctccagc aacttgacaa agcaggagaa taccagcctg aacgaaggag     840
gactcagaga tccaacgcat gttactgctc ccgttgctaa aaatgagact atgctctctc     900
cggcgggcgc tacgagaaga cttgtagac attacgaagt aagagactcc gcggaattga     960
aagtaattgc tccccataa taccggatcg atgacctcac ctttagcat tgggactctg    1020
tctacgcata tccaagactc tggtgatgag ggcatcgatc ttagacgatg atggatatacc   1080
agggccatgc atctcttgca gttgactgat gacgttatcc cttcgggata agcttgaaag    1140
agacagtaaa gctctgattt cctctgagcg tggcatcgct gatgtagtag cagcagtctg    1200
agcctaataa ggagaccagt tgatccacga atgcccccca aagacctacc caggactggt    1260
gtagaaccga gctgctctca caaacgggac actgcacgca agcgtcgcac aatgagctga    1320
tattcgtact agctgtaccc acacagtccc tacagccttt aatacgtgag aggggggaag    1380
cggctagcca acctgtggaa ctcatgaccg cagtccatcc ataccagatc atcttcccca    1440
```


-continued

taccccgatga	tgatatcgto	gtcacatagc	tctaccaaat	acagtgtgcc	tcgcttatg	1500
catcaacacc	tacgcatttc	ctcattcctt	catcgtcacc	agaattcacc	aaatacttat	1560
ggtttgcagc	ctgaaagcat	cagtactgtc	aaaattaggg	agaccaccta	ccaatctgag	1620
cttcattgata	agcgagagca	cctcaaccat	atgctcgccg	atttcatttc	gtctcagata	1680
gccgcgtatt	ctgtctcgtt	agagttcgaa	aagattgtcg	tagacctcac	ggctccttgg	1740
tttcatcgaa	agtgtatgca	gtgcactcgt	taattctggt	aggcggactt	ccatctgctt	1800
ctccgctttc	gtgcgcctca	gcatgagacg	cttgagaacc	ctcgtcctga	gcagctccaa	1860
cccctccgct	ccttcaaacg	catcgaagcc	gtggctgatg	cgaactccat	cgtctggtaa	1920
agcaccgcgc	caaaagggta	cctcttgatg	ggattggcaa	tgaatcgtgt	aaagtaaatg	1980
tagtggctaa	ttctgggatg	cccgcaggcc	ttgcagttct	ctatgggggtg	gtccagcaac	2040
acgcagtcac	aaccgcacca	gtgcacatc	ctagcgcctt	cggcgagaac	cgggaggaat	2100
ctatgggcac	aacaatgatg	aatttcgggt	acgactgtca	ccttatcagc	gaaaaaaggt	2160
ctccaacttt	gttttgagaa	ggagttcccg	acaggcacca	tcggaacctc	gaccgcaagg	2220
cacacctgag	catcgatggt	gacacgaagg	ggacggaccg	ggaggattct	tacgcggcct	2280
tagcggctga	ggacccggct	gccttgatct	tgtgggcctc	gtctaagact	actctctccc	2340
agcgcaaac	atgcaatagc	cctgcacggc	gcaatcgggt	ctccaagtcc	gacctgtcag	2400
tccctggaag	gaaagaacga	tcacgatac	ctgaggagac	cccaacagag	ccccacctgt	2460
ctcgtcgcta	ctgtctcga	cagctgcttg	cgctaggcga	accctccggg	gtttaaccgc	2520
acgcctcaca	atctccgctg	ccttacgacg	ggccccaccc	atatcttgcc	cacacgatcg	2580
aggcatcccc	atagtagccc	ctttccatcc	cacttcgcta	ctgctcatgt	tggcagtaga	2640
gagtttcggg	agaggactgc	attgcgggtga	tggtttctgg	taagatcgga	cgggtccggg	2700
gacactccac	gcattatcat	cgacgtttct	tttgttccct	gccatttctt	cagccttgat	2760
acgtttcccc	aagcccagca	gaggactctc	ctccaggcgc	cttcggggca	gtctctccct	2820
ctttacgaga	ggactatata	tcttctact	gacaggtaca	gtcggaccat	cgagcactgc	2880
tgaactcccc	gtcacaccag	gtcgtggtag	accattactg	aagacgagac	ccttctgagt	2940
gataggccca	acactcgacc	gccattcatg	tcgatcggag	tcccacgagg	ctcgtttctc	3000
caccttgata	taacctagat	tgtgcactc	cctcagaggg	ctgctgggct	tcaatcggac	3060
caccataggc	tttgctctct	cctccacgga	aatgctcgca	ccactcgggc	ggccgtgacc	3120
aaggacatga	tatcgggtgt	ggtttaaaga	cgagctgata	ctgccagccg	ctgccgagga	3180
gggctccacg	agactgtccc	ttgtcgtcca	ctgttctctc	ttaaaacctc	ctgtatgate	3240
gatacctctc	gaagcaacat	gcccaccaat	agtgcgttgt	aaactagcag	aaatagagag	3300
gttgatgcgc	aacggctcctg	tgggaaggcc	tatgctcggg	ctcacggcac	cactagagcc	3360
acccacggac	ggctcttgat	acgggttagt	tctccaagtc	ggcttatagc	agttgtctat	3420
ggagtctctg	ccctgtcag	ctttcggccg	taatctcttg	agcatgtcga	ctagatccct	3480
ccgtgtctct	tggatcatcat	cgacatcctc	ctgtttgacg	agatggctct	cccgcactct	3540
cgagccggct	tgaccagtga	agaagtccct	gatcgtctcc	atggatcccg	gattacgata	3600
ttgtgtccga	ttagaattaa	ccgagacatt	agaaccatac	gaaggcgctc	tgacctccct	3660
cgaacctccg	ccggccaaaa	ctgaacgggt	ctcttcttgg	aagagattct	tccgcaatga	3720

-continued

ctggcctgtc ggaggagccc catcctgatg atggtagggtg gatgatgatg acgatgggtgc	3780
gctcggctga tacactgggtg cactgggatg ggctcggcgg ctggcgtcat aggtccaagt	3840
ggtaacgaggc ctcttcgggc acttctcttt atgcgagaag agcagttctg ggagtatctt	3900
gcgcttgacg tagggacacg ccccttttcag ctgatcgagc tcctttctgt actcggcctc	3960
cagagttctg taagtcgtca gaacgatatc atatcctctc aaggacttag cagtgatctt	4020
agattttcca tggtagcagga atattttcac agtgccaggc cgtaggatc tattgatctc	4080
ggcctcccac tggagcatcg aggtagtggg gcatacgatc agagtggggg tattctctcc	4140
cacaagtttc ttagtaatca acgagaccgt ttgtatggto tccccatgc ccatctcatc	4200
agccaatata ccccccctac agtcctcctt ggtctcctgt tcacacatcc aagcgagacc	4260
ttcacgttgg tatccagca gcggaattat taactgaaaa taaccaagca atcaatcctc	4320
agagtcggg agccgcacgg tcatccgaag cattccttat atattataag cttgcgcgacc	4380
tgctctggag ggggatactt gagcaccaac tcgggaggta tctctggac catcctcccc	4440
agctcccgtt tcaccctggc ttcttcagcc ggctgggtat gtgtgggatt gggatcggcg	4500
ttctcgtctc tgatgaacgc gttagggtac attaatgggt aaagttggaa ctccacgaaa	4560
tcaattctga aggatcggag acattagtct gacctgtacc aaatgacctt aaactcaagt	4620
ccattcttcc aacgaaaaac ctccgaagat catggcgctc tcggtagtta acatgtcaac	4680
gtagcgtgtg ttgagaaaaa atacaacagc aatacaagat cgaaagccag cctggtagct	4740
aggatttgaa cctgatgtct tctcctgagt agcaattcag attctagtaa tgtctatcat	4800
actccaacac atgggcctct ctttttacc tataatgatg agcaaatacg caaaaccaca	4860
agggcggtta cttgacccta ccgcgacctc tcgctctcct gtggtatcat ggatcccat	4920
ctccatgatc tgatcaacag ttctgtctga acgatctgca gtagggttga agacgtagtg	4980
atgaagctgg cattcttcaa tctatgcaga tacatctca atagtaggga acaccagagg	5040
tcaattaaat gccacaatt tcaccagaaa gctgagaacc tcagtccac gaagtgcctg	5100
ctagtcatca gaccgagagt taaacgccga gcctattcgg aaaaccgact atgatgagac	5160
tctcatcgtg tcattattga tgccatcatc ataactctgat ccaatcacgt catggtatca	5220
gatggcgagt gactcgcgcg gagtcagtac ctgaaagtgc atcctatttc cacggcgcg	5280
gcattgctcat cagcctgtct cttggcagtc gtacgcatgc gtcagcctat tgaatgccac	5340
cacagactca agtcaatgac tcttaaccca gagattaacg aaagtccaga gcatatgtgt	5400
ggacctgtga agaggaagca atgatgagag aatactctgt tcgggcctgt ataagaacac	5460
actgaatagc agagtggaaa tgctgagatc actctggcac acacggagtg agtcggttca	5520
ggtcagctac gaattatttt ccatttcacc cagctgtatg cccgagtata acaaatttct	5580
tcactggggc aaatatgcca cgtcaagata tgccaaagtg gggccactat gccacaccaa	5640
gatctgcttg agtatgatat aaatttcttg tctggggcaa atatgccaca ccaagatatg	5700
ccaaagtggg gccactatgc cacaccaaga tctgcttgag tatgatataa atttcttg	5760
tagggcaaat atgccacgcc aagatatgcc aaagtggggc cactatgcc caccaagttc	5820
tgcttgagca caatgaattt ctggtgtggg actcatatac caccgcaaaa tacgcctaag	5880
cggggtaact atgccacgcc aaaatatgcc agagtggggc aagtatgaca cgccaagata	5940
tgctcaagta aaatgaattt cttcactggg gcaaatatgc catgccaaaga tatgcctgag	6000

-continued

tataaacaca caatttcttc agtggggcag acatgccaaa ccaagatctg ctcgagtaca	6060
atgaactggt gtgggtcaaa tataccacgt caaaatatgc caaatcgggg taactatgcc	6120
acgtcaacat aggccagagt ggggcaacta ttatgcgtta agatatgctt aagtacaata	6180
tatttcattt ttctactggg acaaatatgc cagccaaga tgtgtccgag tatgaaaaaa	6240
tcttcagtga gacacctatg ccaggacaag atatatcgga gaacaataaa ttctgtaagt	6300
gggataaata tgccacgcg agatatacct gagtggggca aatatgccaa gccgagatat	6360
gctcgagtac agtgaacttc ttcagtaggg ctgatatgcc cgccaaaaca tgccctgggtg	6420
tacgaaatta ttcagtga aaatttctc cagtgggggt acccacttat cttggcgtgc	6480
cataggtagc ccactggggt aaccatgcc cgccaagata tgcccagta caacaaaatt	6540
attcggtagg gcagatatac caccgcgata catcactgaa aacaacaaat ttcgccagt	6600
gggcagctat gccatcccaa gaaatgcccc agtacacgca atctcccgag agcgcgacct	6660
agggcatcca ccttggtcgg aaaaacaaac gaaacacaat ccggttgga cgaattgcg	6720
aagataaatg cgcatagtaa agtcgactcc gttcgagagt agacatgcc tttccgagct	6780
taactgcgac atgctatctt ctccaggagag actctgacga gtatttctt ggtaatttcc	6840
agtggagagt ggacactgaa cacagacctc tgaccccgcg cagtactcac aagatgacgc	6900
tccgactgag aaaagattga tcttactaac tgtgaagcag acatacgaaa ggtgtattcc	6960
aatcttgctg ttgttggtat tgttgtagt ctccgtgtgg gagtgaaccg catccattg	7020
tcgagtgaat cgagcggcgc accgaaagat gagcaatact cagactgatg tgcagtgtg	7080
caccatagaa atacgaaaca gcgtgatagt atcagcattt tctgcctgt ctgattcggg	7140
atttgggac atgcaccatc cagcattctc cagaggggag cggcacgcat ggcaaaattg	7200
tcaaattcaa tactattgag agcaccaaat caattcgagt ggtcgcgcat tagcgtaact	7260
ctaatatgcg atcaacccca ataaccctc ggccggtcta tacgggcctt caaatactgg	7320
tgagatgcaa aatcaagcag tttaggtcgg aaattgtcgt ggttcgtcaa aactcaattc	7380
atcgagtccc tccggtcatt cgtcgcgcgc gttgaagacg aacggcgcac caatcatttg	7440
cgcacgcgtg caaaacgctc attgcgcagg cctacattcc agaattgtagg gccacgggat	7500
gtgctgcact aacatcgcca gactctacac tcgtagcata atatattgaa ttcgaggagt	7560
aggatcttat ctgaggatag tcacactagt cgtactgctg aatcagcgtt gctgattctg	7620
caacgttatg actattaaga cgatcgtagg gacgtcatta cgtcgtc atg caa gtt	7676
Met Gln Val	
1	
ccc gcg gag cat cac tcc act cgg gtt ata tct atc tgt gat atc gtc	7724
Pro Ala Glu His His Ser Thr Arg Val Ile Ser Ile Cys Asp Ile Val	
5 10 15	
atc tca ggc ccc ttt gga atg tgt aac cat gat tac tcc gct tct ata	7772
Ile Ser Gly Pro Phe Gly Met Cys Asn His Asp Tyr Ser Ala Ser Ile	
20 25 30 35	
cct gcc tct agt agt ggt agc act cga cgt atg cgt ttg gta gcc tac	7820
Pro Ala Ser Ser Ser Gly Ser Thr Arg Arg Met Arg Leu Val Ala Tyr	
40 45 50	
atc aca ttg gtc tct atc cac tat caa cag cta ctc ttt tac tct tct	7868
Ile Thr Leu Val Ser Ile His Tyr Gln Gln Leu Leu Phe Tyr Ser Ser	
55 60 65	
atc ata act ata atc act ggc tat cac tac tat gtc gca gct ctg ccc	7916

-continued

Ile	Ile	Thr	Ile	Ile	Thr	Gly	Tyr	His	Tyr	Tyr	Val	Ala	Ala	Leu	Pro	
	70						75					80				
ctt	tac	gac	atc	tca	att	gct	cta	tct	gtg	ctt	tcg	gga	cta	aca	cta	7964
Leu	Tyr	Asp	Ile	Ser	Ile	Ala	Leu	Ser	Val	Leu	Ser	Gly	Leu	Thr	Leu	
	85					90					95					
ctg	tggt	tta	tgt	aat	tgc	tat	tac	aac	agc	aag	ccc	aat	gta	ttc	tgc	8012
Leu	Trp	Leu	Cys	Asn	Cys	Tyr	Tyr	Asn	Ser	Lys	Pro	Asn	Val	Phe	Cys	
100					105					110				115		
atc	gat	cat	gtt	gag	ttt	gac	gct	cct	ccc	tct	tggt	aag	gtc	agt	cat	8060
Ile	Asp	His	Val	Phe	Asp	Ala	Pro	Pro	Ser	Trp	Lys	Val	Ser	His		
				120				125					130			
gaa	gac	atc	atc	aac	att	gcc	aag	ata	caa	gggt	tgc	tac	acg	gaa	gat	8108
Glu	Asp	Ile	Ile	Asn	Ile	Ala	Lys	Ile	Gln	Gly	Cys	Tyr	Thr	Glu	Asp	
			135					140					145			
tca	ctc	aac	ttc	atg	cag	cgt	ctt	ctc	gag	agg	tct	gggt	act	tgc	cct	8156
Ser	Leu	Asn	Phe	Met	Gln	Arg	Leu	Leu	Glu	Arg	Ser	Gly	Thr	Cys	Pro	
	150					155						160				
gat	aag	agt	gct	gct	tac	cct	cca	gtg	ggt	ggt	gag	tca	ctg	agg	act	8204
Asp	Lys	Ser	Ala	Ala	Tyr	Pro	Pro	Val	Val	Val	Glu	Ser	Leu	Arg	Thr	
	165					170					175					
aac	gcc	ccc	gcc	gat	gcc	tct	gct	gtc	aat	act	aga	gag	gaa	gcg	agg	8252
Asn	Ala	Pro	Ala	Asp	Ala	Ser	Ala	Val	Asn	Thr	Arg	Glu	Glu	Ala	Arg	
180					185					190				195		
gaa	gtg	atc	ata	act	acg	gtc	aaa	gat	ctg	ctc	aag	aaa	act	gggt	gtg	8300
Glu	Val	Ile	Ile	Thr	Val	Lys	Asp	Leu	Leu	Lys	Lys	Thr	Gly	Val		
			200					205					210			
cat	cct	aaa	tct	atc	gac	tac	atc	atc	gtc	aat	tgc	gcc	atg	tac	aac	8348
His	Pro	Lys	Ser	Ile	Asp	Tyr	Ile	Ile	Val	Asn	Cys	Ala	Met	Tyr	Asn	
		215					220						225			
ccg	aca	ccg	tca	cat	gct	gct	atg	ata	gtg	aat	gaa	gtc	gggt	atg	agg	8396
Pro	Thr	Pro	Ser	His	Ala	Ala	Met	Ile	Val	Asn	Glu	Val	Gly	Met	Arg	
	230						235					240				
aat	gac	gtt	atc	acc	tat	aac	ctc	agt	gggt	atg	ggg	tgt	agt	gcc	gggt	8444
Asn	Asp	Val	Ile	Thr	Tyr	Asn	Leu	Ser	Gly	Met	Gly	Cys	Ser	Ala	Gly	
	245					250					255					
gtt	atc	aca	att	gat	cta	gca	acg	cgt	ctg	ttg	aga	gag	acc	aga	gggt	8492
Val	Ile	Thr	Ile	Asp	Leu	Ala	Thr	Arg	Leu	Leu	Arg	Glu	Thr	Arg	Gly	
260					265				270					275		
agg	gca	ctg	att	gtc	tca	act	gag	ata	cta	act	cgt	tgc	ttc	tat	cgt	8540
Arg	Ala	Leu	Ile	Val	Ser	Thr	Glu	Ile	Leu	Thr	Arg	Cys	Phe	Tyr	Arg	
			280					285					290			
gggt	aat	gat	cgt	gaa	cca	ctg	atg	gggt	aac	aca	tta	ttc	aga	tgt	gggt	8588
Gly	Asn	Asp	Arg	Glu	Pro	Leu	Met	Gly	Asn	Thr	Leu	Phe	Arg	Cys	Gly	
	295						300					305				
gggt	gct	gct	gct	ttg	cta	tcg	tca	ttg	cct	aaa	gac	cta	tct	cgt	gcc	8636
Gly	Ala	Ala	Ala	Leu	Leu	Ser	Ser	Leu	Pro	Lys	Asp	Leu	Ser	Arg	Ala	
	310						315					320				
aaa	tat	aag	ttg	tta	cat	acc	gta	aga	acg	caa	gtt	ctc	gggt	aat	gag	8684
Lys	Tyr	Lys	Leu	Leu	His	Thr	Val	Arg	Thr	Gln	Val	Leu	Gly	Asn	Glu	
	325					330					335					
agt	ttt	gaa	acg	att	atg	gag	act	gat	gac	agt	acc	aag	ccc	aac	agt	8732
Ser	Phe	Glu	Thr	Ile	Met	Glu	Thr	Asp	Asp	Ser	Thr	Lys	Pro	Asn	Ser	
340				345						350				355		
att	gtt	aca	cta	agg	ctc	cag	aag	agc	atc	atc	aaa	gtt	gct	gct	gtt	8780
Ile	Val	Thr	Leu	Arg	Leu	Gln	Lys	Ser	Ile	Ile	Lys	Val	Ala	Ala	Val	
			360					365					370			
gct	att	aaa	caa	aat	ttt	act	aag	ctt	gct	tat	atg	gtt	ctc	cct	ctg	8828

-continued

Ala	Ile	Lys	Gln	Asn	Phe	Thr	Lys	Leu	Ala	Tyr	Met	Val	Leu	Pro	Leu	
			375					380					385			
aga	gaa	ctg	ttg	aag	gtc	tta	tac	tcg	atg	gtg	acg	atg	aaa	atg	aga	8876
Arg	Glu	Leu	Leu	Lys	Val	Leu	Tyr	Ser	Met	Val	Thr	Met	Lys	Met	Arg	
		390					395				400					
aga	aag	tcg	tca	aaa	gaa	ggg	cgc	gag	ttg	tac	gta	cct	gat	ttt	aga	8924
Arg	Lys	Ser	Ser	Lys	Glu	Gly	Arg	Glu	Leu	Tyr	Val	Pro	Asp	Phe	Arg	
	405				410						415					
aag	ggg	act	gat	cat	tgg	tgt	att	cat	gct	ggg	ggc	cgt	ggg	gta	ttg	8972
Lys	Gly	Thr	Asp	His	Trp	Cys	Ile	His	Ala	Gly	Gly	Arg	Gly	Val	Leu	
	420				425				430					435		
gat	acc	tta	caa	gat	tct	ctc	cag	ctg	tca	gac	tac	gat	atc	caa	gca	9020
Asp	Thr	Leu	Gln	Asp	Ser	Leu	Gln	Leu	Ser	Asp	Tyr	Asp	Ile	Gln	Ala	
			440					445						450		
agc	cgt	agt	gtt	ctc	tat	gag	aga	ggc	aac	acc	agt	agc	agt	agc	ata	9068
Ser	Arg	Ser	Val	Leu	Tyr	Glu	Arg	Gly	Asn	Thr	Ser	Ser	Ser	Ser	Ile	
		455					460					465				
tgg	tat	gag	ttg	gca	tgg	ctc	gaa	cgt	gac	caa	cgt	att	aag	cgt	gga	9116
Trp	Tyr	Glu	Leu	Ala	Trp	Leu	Glu	Arg	Asp	Gln	Arg	Ile	Lys	Arg	Gly	
	470					475					480					
gat	agg	gta	tta	cag	ttg	gct	ttt	ggg	agt	ggg	ttc	aaa	tgt	aac	tca	9164
Asp	Arg	Val	Leu	Gln	Leu	Ala	Phe	Gly	Ser	Gly	Phe	Lys	Cys	Asn	Ser	
	485				490					495						
tca	gta	tgg	ttg	gct	atg	cat	aat	att	gat	gcg	taa	cgacaatcag				9210
Ser	Val	Trp	Leu	Ala	Met	His	Asn	Ile	Asp	Ala						
	500				505				510							
tttttctcac	tatgagttgg	ctccaccgta	atcaatggcc	atcatctcct	tttctagtta											9270
ttatcgatga	ttatagtcag	tgccgatgtg	tgctagtgtt	ttactcttta	tcaacttgtg											9330
agtttcaggc	ccctttttccc	atg	act	act	tca	acc	act	act	gtg	caa	cta	caa				9383
			Met	Thr	Thr	Thr	Thr	Thr	Val	Gln	Leu	Gln				
							515				520					
gaa	gac	ctg	tca	agt	ggg	gac	cag	aac	gcc	cac	ccc	agt	cca	agc	cga	9431
Glu	Asp	Leu	Ser	Ser	Gly	Asp	Gln	Asn	Ala	His	Pro	Ser	Pro	Ser	Arg	
		525					530					535				
gct	act	cct	agt	gtt	ggg	gat	act	aag	gag	gat	gcg	agg	gtt	gtg	atc	9479
Ala	Thr	Pro	Ser	Val	Gly	Asp	Thr	Lys	Glu	Asp	Ala	Arg	Val	Val	Ile	
		540				545					550					
aaa	cta	ttt	ggg	aca	tgg	gtt	gat	gtt	aca	gct	tgg	ttg	aat	gac	cat	9527
Lys	Leu	Phe	Gly	Thr	Trp	Val	Asp	Val	Thr	Ala	Trp	Leu	Asn	Asp	His	
	555				560						565					
cct	ggg	ggg	tct	aaa	gtg	ctc	aga	gca	ttc	aac	aag	aag	gac	gcg	act	9575
Pro	Gly	Gly	Ser	Lys	Val	Leu	Arg	Ala	Phe	Asn	Lys	Lys	Asp	Ala	Thr	
	570				575					580				585		
gat	gct	gtt	atg	gcc	atg	cac	act	gat	gaa	gct	atc	aag	cgc	atc	atc	9623
Asp	Ala	Val	Met	Ala	Met	His	Thr	Asp	Glu	Ala	Ile	Lys	Arg	Ile	Ile	
			590					595						600		
aga	ttt	tca	aat	gtg	gtc	tcc	tcg	gcc	ccc	atc	aac	gcc	tct	att	ggg	9671
Arg	Phe	Ser	Asn	Val	Val	Ser	Ser	Ala	Pro	Ile	Asn	Ala	Ser	Ile	Gly	
		605					610					615				
gat	gtc	cag	gtt	att	gag	aaa	tct	cta	tcg	aga	gaa	cag	ttg	atg	tat	9719
Asp	Val	Gln	Val	Ile	Glu	Lys	Ser	Leu	Ser	Arg	Glu	Gln	Leu	Met	Tyr	
		620				625					630					
tac	aag	ctc	cgc	act	ctt	gct	aga	aac	cag	ggc	tgg	ttt	caa	agc	aat	9767
Tyr	Lys	Leu	Arg	Thr	Leu	Ala	Arg	Asn	Gln	Gly	Trp	Phe	Gln	Ser	Asn	
	635				640						645					
cta	tta	tat	gaa	gga	gtg	aaa	gca	atg	ata	gcc	ttc	ggg	ttg	ctc	atc	9815

-continued

Leu 650	Leu	Tyr	Glu	Gly	Val 655	Lys	Ala	Met	Ile	Ala 660	Phe	Gly	Leu	Leu	Ile 665	
atc	ggg	ttt	gct	act	ctc	tac	ttt	gac	tat	ggg	att	tgg	tca	acc	gca	9863
Ile	Gly	Phe	Ala	Thr 670	Leu	Tyr	Phe	Asp	Tyr 675	Gly	Ile	Trp	Ser	Thr	Ala 680	
ctg	ata	ggg	ttc	gct	tgg	ttt	cag	ctg	ggg	tgg	ttg	gga	cat	gac	tgg	9911
Leu	Ile	Gly	Phe	Ala 685	Trp	Phe	Gln	Leu 690	Gly	Trp	Leu	Gly	His	Asp	Trp 695	
tca	cat	cat	aca	gct	cta	cct	aag	tct	act	act	aac	tgt	gcg	aac	tac	9959
Ser	His	His 700	Thr	Ala	Leu	Pro	Lys 705	Ser	Thr	Thr	Asn	Cys	Ala	Asn	Tyr 710	
aac	gac	tat	ctt	ggc	tgg	ctt	acc	ggg	ttg	gcc	aga	ggg	aat	aca	ctt	10007
Asn	Asp	Tyr	Leu	Gly 715	Trp	Leu	Thr 720	Gly	Leu	Ala	Arg	Gly	Asn	Thr	Leu 725	
ctg	tgg	tgg	aaa	ctg	agg	cac	aat	act	cat	cac	gtg	ctg	acc	aat	cag	10055
Leu	Trp	Trp	Lys	Leu 730	Arg	His	Asn 735	Thr	His	His	Val	Leu	Thr	Asn	Gln 745	
tac	gag	aat	gat	cct	gat	att	cta	act	caa	cca	ccg	ttg	cat	ttt	ttc	10103
Tyr	Glu	Asn	Asp	Pro 750	Asp	Ile	Leu	Thr	Gln 755	Pro	Pro	Leu	His	Phe	Phe 760	
gag	gac	ttc	gat	gtt	ggg	aat	gtg	aac	aga	tat	caa	gct	gtc	tac	tac	10151
Glu	Asp	Phe	Asp	Val 765	Gly	Asn	Val 770	Asn	Arg	Tyr	Gln	Ala	Val	Tyr	Tyr 775	
cta	cca	atg	tta	act	cta	ctg	cat	cta	ttt	tgg	ttg	tac	gag	tcg	gta	10199
Leu	Pro	Met 780	Leu	Thr	Leu	Leu	His 785	Phe	Trp	Leu	Tyr	Glu	Ser	Val		
ttg	gtt	tgc	ttg	aga	caa	agt	agg	tct	att	aat	aga	tac	aac	cgt	atg	10247
Leu	Val	Cys	Leu	Arg	Gln 800	Ser	Arg	Ser	Ile	Asn	Arg	Tyr	Asn	Arg	Met 805	
cat	gcc	agg	agg	gat	acc	gta	gct	ttg	gta	ctt	cac	ata	ctc	att	gtt	10295
His	Ala	Arg	Arg	Asp	Thr 810	Val	Ala	Leu	Val	Leu	His	Ile	Leu	Ile	Val 825	
ggc	atc	ata	tcg	tac	acc	agt	ggg	aag	tat	ttg	ctc	atc	ctt	ctg	gcc	10343
Gly	Ile	Ile	Ser	Tyr 830	Thr	Ser	Gly	Lys	Tyr 835	Leu	Leu	Ile	Leu	Leu	Ala 840	
tac	atg	ctt	agt	ggc	ttt	cta	act	gct	gtt	gtt	gta	ttt	gcc	agc	cac	10391
Tyr	Met	Leu	Ser	Gly 845	Phe	Leu	Thr	Ala 850	Val	Val	Val	Phe	Ala	Ser	His 855	
tac	aac	gag	cct	agg	gta	gct	tct	ggg	gaa	tcc	tta	tca	ctc	gtt	cgt	10439
Tyr	Asn	Glu	Pro	Arg	Val	Ala	Ser 860	Gly	Glu	Ser	Leu	Ser	Leu	Val	Arg 865	
cag	aca	ttg	tta	acc	act	atc	aat	ata	ggc	tca	ttc	agt	gat	act	cat	10487
Gln	Thr	Leu	Leu	Thr 875	Thr	Ile	Asn 880	Ile	Gly	Ser	Phe	Ser	Asp	Thr	His 885	
tgg	gag	aag	aag	ttg	tgg	ttc	tat	cta	act	ggg	ggg	ctt	aat	atg	caa	10535
Trp	Glu	Lys	Lys	Leu 890	Trp	Phe	Tyr	Leu	Thr 895	Gly	Gly	Leu	Asn	Met	Gln 905	
atc	gag	cat	cat	ctc	ttc	cca	aca	atg	ccc	cgc	cat	aat	ctt	ccg	aag	10583
Ile	Glu	His	His	Leu 910	Phe	Pro	Thr	Met	Pro 915	Arg	His	Asn	Leu	Pro	Lys 920	
aca	act	ttt	ctg	gtc	aag	tca	cta	gcc	cag	gag	cta	gga	ctg	cca	tac	10631
Thr	Thr	Phe	Leu	Val 925	Lys	Ser	Leu	Ala 930	Gln	Glu	Leu	Gly	Leu	Pro	Tyr 935	
aag	gaa	acc	aac	att	gtc	agt	tta	acc	aag	gcg	gcc	gtt	act	act	ttg	10679
Lys	Glu	Thr	Asn	Ile 940	Val	Ser	Leu	Thr 945	Lys	Ala	Ala	Val	Thr	Thr	Leu 950	
cat	cat	aat	gct	ctg	cgt	aac	atc	gag	aga	ttg	ctt	gct	agg	tag		10724

His 955	Asn	Ala	Leu	Arg	Asn 960	Ile	Glu	Arg	Leu	Leu 965	Ala	Arg					
ttt	cat	cat	tgca	acc	cgca	aca	aga	acat	gg	tca	act	cg	tagtgg	gg	agaggatt	gt	10784
cg	cat	gg	tc	ag	t	ctt	tg	at	aga	atc	ttt	ct	ct	ct	gt	t	10841
atg	tct	tct	ctt	acc	ctc	tac	aga	ggc	ccc	ttt	tcc	cga	atg	gtg	ctc		10889
Met	Ser	Ser	Leu	Thr	Leu	Tyr	Arg	Gly	Pro	Phe	Ser	Arg	Met	Val	Leu		
970						975					980						
cct	cgt	cag	gaa	atc	tgc	atc	aat	gg	cgc	ata	tac	gat	gtc	act	gag		10937
Pro	Arg	Gln	Glu	Ile	Cys	Ile	Asn	Gly	Arg	Ile	Tyr	Asp	Val	Thr	Glu		
985					990					995							
ttc	atc	aat	cgt	cat	cca	gg	gg	aag	att	atc	ctc	ttc	caa	g	tt		10982
Phe	Ile	Asn	Arg	His	Pro	Gly	Gly	Lys	Ile	Ile	Leu	Phe	Gln	Val			
1000					1005					1010							
gg	t	gat	gcc	act	gat	g	tt	cgt	gag	tt	cat	g	gg	ag			11027
Gly	Ala	Asp	Ala	Thr	Asp	Ala	Phe	Arg	Glu	Phe	His	Ala	Gly	Ser			
1015					1020					1025							
gag	aag	gca	gag	aag	atc	ctc	aaa	acc	cta	cca	tcc	cgt	gat	gat			11072
Glu	Lys	Ala	Glu	Lys	Ile	Leu	Lys	Thr	Leu	Pro	Ser	Arg	Asp	Asp			
1030					1035					1040							
gac	gg	act	ttc	ctt	cct	tca	acc	caa	cgc	tcc	atc	atg	gat	gat			11117
Asp	Gly	Thr	Phe	Leu	Pro	Ser	Thr	Gln	Arg	Ser	Ile	Met	Asp	Asp			
1045					1050					1055							
ttc	aaa	cgc	cta	aga	gat	gac	ctc	gtc	agc	aga	gg	gtc	ttc	aag			11162
Phe	Lys	Arg	Leu	Arg	Asp	Asp	Leu	Val	Ser	Arg	Gly	Val	Phe	Lys			
1060					1065					1070							
cca	agc	gtc	atg	cat	gt	g	tac	cgc	tgc	ttg	gaa	gtc	gt	g			11207
Pro	Ser	Val	Met	His	Val	Val	Tyr	Arg	Cys	Leu	Glu	Val	Val	Ala			
1075					1080					1085							
ctc	tat	ctc	att	ggc	ttc	tat	ttg	g	ctg	tgc	acc	ag	a	gtg			11252
Leu	Tyr	Leu	Ile	Gly	Phe	Tyr	Leu	Ala	Leu	Cys	Thr	Ser	Asn	Val			
1090					1095					1100							
tac	gt	ggg	tgt	g	g	ctt	gg	g	g	caa	gg	cgt	g	gg			11297
Tyr	Val	Gly	Cys	Ala	Val	Leu	Gly	Val	Ala	Gln	Gly	Arg	Ala	Gly			
1105					1110					1115							
tg	ttg	atg	cat	gaa	gga	gg	cat	cac	tct	ctg	act	gg	a	tg			11342
Trp	Leu	Met	His	Glu	Gly	Gly	His	His	Ser	Leu	Thr	Gly	Asn	Trp			
1120					1125					1130							
aaa	gt	gac	cag	ttc	ctc	caa	gaa	cta	ttt	ttc	ggc	att	gg	tgt			11387
Lys	Val	Asp	Gln	Phe	Leu	Gln	Glu	Leu	Phe	Phe	Gly	Ile	Gly	Cys			
1135					1140					1145							
gg	atg	tca	g	gc	tg	tg	cgc	aat	gca	cac	aac	aag	cat	cac			11432
Gly	Met	Ser	Ala	Ala	Trp	Trp	Arg	Asn	Ala	His	Asn	Lys	His	His			
1150					1155					1160							
g	g	cct	cag	cat	tta	ggg	aaa	gat	gt	gat	ctc	gag	aca	ttg			11477
Ala	Ala	Pro	Gln	His	Leu	Gly	Lys	Asp	Val	Asp	Leu	Glu	Thr	Leu			
1165					1170					1175							
c	ctg	gtc	gcc	ttc	aat	aag	gcc	g	ctt	cga	ggc	cgt	cta	c			11522
Pro	Leu	Val	Ala	Phe	Asn	Lys	Ala	Val	Leu	Arg	Gly	Arg	Leu	Pro			
1180					1185					1190							
t	g	tg	atc	aga	tca	caa	g	gtg	tgc	ttt	gca	c	ata	tca			11567
Ser	Val	Trp	Ile	Arg	Ser	Gln	Ala	Val	Cys	Phe	Ala	Pro	Ile	Ser			
1195					1200					1205							
aca	cta	ctg	g	t	ctg	ttt	tg	caa	ttc	tac	cta	cac	c	agg			11612
Thr	Leu	Leu	Val	Ser	Phe	Phe	Trp	Gln	Phe	Tyr	Leu	His	Pro	Arg			
1210					1215					1220							
cat	att	att	a	aca	g	cga	cga	at	ga	tct	ttc	tga	cta	ctc			11655

[illegible]

- continued

gtgatacgac aacactgagc aattgatagg atggaccccc tgagtccggg gccctgagca	13197
aagtgccttag atctagagca cagtattgaa gttgaattta cactgaggat tgcatacta	13257
tcaagttgcc accatacacc tcgatcagcc tttgtccact tacgtatatg agccactata	13317
acaggcgtaa ccgccaagcc gaagttttgt gcagccgttg taacaccata ggccgcgcct	13377
aacagacaaa ccggagtcac aaccatcgat gcagcgatga gtccttggtt ctatccccgg	13437
caacatcatt ttaatgtcga aaactcaagt tctacgatga ttgccaatca cacataatgc	13497
agcttgtaa gagatcaagc cagaaattct ccacagcaac ctaccagtct tctaggagg	13557
tactgcagct gctaccaacg gccatactgc agaggcgaac accgtatagg atagcccaa	13617
aacggtcata gatatacct acacaacaac taaacttaga acgaataaag cctcgtaccg	13677
gggtcaatat aggcaggatg atatgtgccca atgtcgccat agtaaaacta gccagaagaa	13737
aatagaggcg gtaacccaat ttgtctatgc atataccagc gataggagag cccaatgctg	13797
acaccccaaa aagtatctga tcgaatatct tccaactaaa tgatcataat aataacgagc	13857
cattgaaggt cactcgagag cgggtatgagt tgcaccgcca tacggtacga aacagtatca	13917
ctatgttggt ctaatgctca ttccctagca gaatcacaac atagcagaaa agaaggcgca	13977
tcagttctgc actgcattcg aattacacag gaatgctctc taaaaaacg ttatgcaaat	14037
caccttggtc aatcgagaga gttcatcaat aactcttgag gggcatgacg tcaataatag	14097
tgaaaaacgg ttaacatcat ttactatct actgttgagg gcgacaatat gacaactgta	14157
taggaaaaac tgtagtaat tctatatact tactcccatg atctgtccaa ctttaacatg	14217
ggcagccgct ttatccatgg ttggatacca cactcgacg aaaaatgccg cggcgatggt	14277
attgaaaggc agtataaccg cataggccag cagcgagctg agacatacca accagaagtc	14337
taccgataat gacaatgacg attggagact gagaaaaaag gaagaacttc aacacagtgg	14397
tgacaatatt tcgccataag tagccgttat aactgcgcat ttctcagtag aaaaaccgaa	14457
aatcgtggt gaaaactgac aaacattctt tcgaataaca aagttaaggt atgtgagagc	14517
tccaagccac cactagcatt acttctctat aaagccctga ctgggagctt cctcactagt	14577
gatatcatca tcgatgtgct tcgtgaaata acacaacact aacgttagaa taaccgtgcc	14637
tgaaaaaagt ccaccgatgg tgacaccata actacgagaa cagcttactt gtcaccgcta	14697
taagccccgc tatgaacgct cccgttaact aggaacata atgtagaat atatgtgtgg	14757
tttctcagc tgaggtcgta aggttcctca ctacattatg gaaatccaca aacgattttg	14817
ggtagaagcg taaaaaac aacaataagt cctcaaaatt tttccagaat ttccataatt	14877
ttaccaacac atgtagttag ccatgtgtat ccatagatag cगतaggttc atctcaaca	14937
cttactccat atcgtgcctc tacaccaggt gacagcaat cgttgagaac cgagccaaat	14997
cgggcaactg agaggtttag tccaatgca aaggcgatct cctgccctcg gaaccgcct	15057
gctagaagag tcgtctgtgc cacctgaaga taaaggtata agaggaaagt caccgagagt	15117
tccccctaca ttcatgctct cccgcctag tccgtagatt acccttcta gcagcatagt	15177
cctcatagaa aaataatacg acccgacaca ttgtagcgct tgcccagca ataacagtac	15237
cgcagtagg aggagcatgg acctgagcag agcttcttga catgctaaaa gccctacagg	15297
gataaactgc atttttaatg ggagccttcg gaatcttact actacatgag acattgaaaa	15357
agtttaggtt ttgcatgga ctttgaagaa ctattccaca cagctacttt aatattcatt	15417

-continued

gatcacctct gaaatgttgt acaagtttca caaaattcac tcaagtgccg aagcacatca	15477
tcacatcata acagcatatc aaacgctcgt tacctcatac caatccactc tatagagact	15537
cccagtatta atggcggttac catattgggc agggcataga cggtatataa gagattgaag	15597
tagtaggtat attcctcgac agtcataccg ctccctccac ctaaagtagc tgatgcggtc	15657
acttctgaca acaacctacc ggtgaatcga gctgcagtt gatcgtttat cgcggaggga	15717
atatcatagg cgtagtactg gccagagagc gctagacagg ccacgatgag aacagcccat	15777
cttagttttt caggagggtc gggagtagac ataataaaat catagctacg aaacagaaat	15837
tcagccaagt ttgagaaaat accttcccca ggatttgata acaacaggaa aaatgtttat	15897
aatgtgatga tgttaaactg attaagaat gtgttcctag ccgtgtagga aattcaaaat	15957
gagtttctact cgggaacatt ctggaagaat cactgcgacg aaagcgatct ggacacagca	16017
acgagcagcg gttgactttt caccgaaac cctcacgaca gtcccttcgc gaaaatcata	16077
caggcaaagt ttcataaaaa aaatgcaatt ttccggtaaa aaaccgcga gaaaaaccgt	16137
cagtgatgat tgacgatccg attacacca aaatgctgat atttttacgg aaaatttttc	16197
cgtaaaagct caggccagcc caggcgtctc gcactgattc atcccttccc ataataacac	16257
aattcctcta ctatggacca atacgagtct tagctgtaaa gggctaccac cagtagcaga	16317
gccaacagta acagtaagaa aatgatcaac catagaagag atgtagacta aacgcatgaa	16377
gtgaggccag ggacagctca acagctactc aatgtgagag tcttggtgaa ttttgccgag	16437
gtaataatcg ataaaaatcaa aacaatgctg ttccaccgt tttacgcgaa gtgacgtaaa	16497
actcgggtga aaacgcgata ttcgcgctat gcagtagtcg tgaatatgt ttttcatcag	16557
tggttttcat atcactaggg gaaactccaa cacattcaca agtagaaagg aacaacaact	16617
gcacaaaacg tcataaacca caccaagttc ggttcctgca aattgggtatt acgatcgaac	16677
cctctagaat tttccccac atcatgtcgt cattggctca ctctgcgcca ataatttagc	16737
gcgcgcccga ccgaaaagat ctcagaaata ctcaagccta ccttgcctct gtcgtattaa	16797
tgggcgccac gcttcagacg tgttacgctc cggcagtgag gattatatgc atattttact	16857
tatatctctt atagaatata agaacactga cgtactaaac tatacaaacc atgtgttggt	16917
ctattttcaa cctcaagcag tctgattgac agatcccgcg ggaaaacaga caaaagaatg	16977
gtaggcggta tctgtacact acacagtgag gggaacttcc agagcccgaa aagtatgctt	17037
aggcgtcttc gaccgcgtgg tgtccagggt tcgcaacgca acaggctggg aactctacac	17097
attttcaatc tcaaattcag cgaatgaaag aacaaattga atagtgaag ttgatttcca	17157
tagagtgaca ggaattttct tcggctgaaa actcatttag cccatgggaa tcaaatgtga	17217
ttgaaaaagt gtataaaaca accaatatcg acgatcgagg aattatgtat tctccgatat	17277
ttaaacttta taatttttcc actcatgaag tttctcgaga gcggtataac caggtaaatg	17337
atatcatgat tgaacctaat acccgggtga acgacggtat ttcccaaccg tgaatcatcg	17397
atcacatgga ccacaagctc agtgcgtcaa actgatatac gctactgta ttcacataac	17457
tatagaactt catcaacaca actgctgcat atgtgaaaac ttgaaagtgt cttatcatca	17517
atctatgaaa ggcaggaacg ataacatagt cgcatttcta acgactacga acaatgacgt	17577
ttaatatattt gggaagatca cgatctttac atagtacttg cgcagtagcg acaatgagat	17637
cggctctatcg tacgtaacag acaacaattg cttcgaatcg gtaacatcac cgattgaaga	17697

-continued

```

gttttaacag gagataaacg atgaagattt acagtatagg tagccatcaa acattaataa 17757
cagaagagct tatacagccg aatagcatta gcttggttatt ggatagcagt agatagatat 17817
ttctttataa tacttaggcg aattcatcac caaacgcctt gatgaacgaa cttgtctaac 17877
tgcttaccag aaaccaagca accaccaata accccagcac accgtgttca taacaatcag 17937
attcacaacc atcacgatga caccctggaa ccaccatagc ctcaacggga cgtatcccaa 17997
gttgaagaaa ggtggattgg tagagctggt gtagtgagtt aaatgcccgag atagagttgt 18057
atacgcaagc gctctgcaac caagctccat cggaacacca gcggcctgca tgatctgcag 18117
gaacactggg aacatggcag agacatgtgc agtaatactt gcaaacagat actgggacac 18177
atagaaaata gccgtgcaaa tccatacact gccgtaagcc gccacacttg acaagtcgat 18237
cttttcggca aaccactcaa agaagccagt ttccttcaac tcagtagcca acatcagcaa 18297
cacaccgaac caaaggaaca aatcccaagc tccactgtta ttcac 18342

```

<210> SEQ ID NO 2

<211> LENGTH: 510

<212> TYPE: PRT

<213> ORGANISM: Perkinsus marinus

<400> SEQUENCE: 2

```

Met Gln Val Pro Ala Glu His His Ser Thr Arg Val Ile Ser Ile Cys
1           5           10           15
Asp Ile Val Ile Ser Gly Pro Phe Gly Met Cys Asn His Asp Tyr Ser
20          25          30
Ala Ser Ile Pro Ala Ser Ser Ser Gly Ser Thr Arg Arg Met Arg Leu
35          40          45
Val Ala Tyr Ile Thr Leu Val Ser Ile His Tyr Gln Gln Leu Leu Phe
50          55          60
Tyr Ser Ser Ile Ile Thr Ile Ile Thr Gly Tyr His Tyr Tyr Val Ala
65          70          75          80
Ala Leu Pro Leu Tyr Asp Ile Ser Ile Ala Leu Ser Val Leu Ser Gly
85          90          95
Leu Thr Leu Leu Trp Leu Cys Asn Cys Tyr Tyr Asn Ser Lys Pro Asn
100         105         110
Val Phe Cys Ile Asp His Val Glu Phe Asp Ala Pro Pro Ser Trp Lys
115         120         125
Val Ser His Glu Asp Ile Ile Asn Ile Ala Lys Ile Gln Gly Cys Tyr
130         135         140
Thr Glu Asp Ser Leu Asn Phe Met Gln Arg Leu Leu Glu Arg Ser Gly
145         150         155         160
Thr Cys Pro Asp Lys Ser Ala Ala Tyr Pro Pro Val Val Val Glu Ser
165         170         175
Leu Arg Thr Asn Ala Pro Ala Asp Ala Ser Ala Val Asn Thr Arg Glu
180         185         190
Glu Ala Arg Glu Val Ile Ile Thr Thr Val Lys Asp Leu Leu Lys Lys
195         200         205
Thr Gly Val His Pro Lys Ser Ile Asp Tyr Ile Ile Val Asn Cys Ala
210         215         220
Met Tyr Asn Pro Thr Pro Ser His Ala Ala Met Ile Val Asn Glu Val
225         230         235         240

```

-continued

Gly	Met	Arg	Asn	Asp	Val	Ile	Thr	Tyr	Asn	Leu	Ser	Gly	Met	Gly	Cys
			245						250					255	
Ser	Ala	Gly	Val	Ile	Thr	Ile	Asp	Leu	Ala	Thr	Arg	Leu	Leu	Arg	Glu
		260					265					270			
Thr	Arg	Gly	Arg	Ala	Leu	Ile	Val	Ser	Thr	Glu	Ile	Leu	Thr	Arg	Cys
		275					280					285			
Phe	Tyr	Arg	Gly	Asn	Asp	Arg	Glu	Pro	Leu	Met	Gly	Asn	Thr	Leu	Phe
	290					295					300				
Arg	Cys	Gly	Gly	Ala	Ala	Ala	Leu	Leu	Ser	Ser	Leu	Pro	Lys	Asp	Leu
305				310						315					320
Ser	Arg	Ala	Lys	Tyr	Lys	Leu	Leu	His	Thr	Val	Arg	Thr	Gln	Val	Leu
			325						330					335	
Gly	Asn	Glu	Ser	Phe	Glu	Thr	Ile	Met	Glu	Thr	Asp	Asp	Ser	Thr	Lys
			340					345					350		
Pro	Asn	Ser	Ile	Val	Thr	Leu	Arg	Leu	Gln	Lys	Ser	Ile	Ile	Lys	Val
		355					360					365			
Ala	Ala	Val	Ala	Ile	Lys	Gln	Asn	Phe	Thr	Lys	Leu	Ala	Tyr	Met	Val
	370					375						380			
Leu	Pro	Leu	Arg	Glu	Leu	Leu	Lys	Val	Leu	Tyr	Ser	Met	Val	Thr	Met
385					390					395					400
Lys	Met	Arg	Arg	Lys	Ser	Ser	Lys	Glu	Gly	Arg	Glu	Leu	Tyr	Val	Pro
			405						410					415	
Asp	Phe	Arg	Lys	Gly	Thr	Asp	His	Trp	Cys	Ile	His	Ala	Gly	Gly	Arg
		420					425						430		
Gly	Val	Leu	Asp	Thr	Leu	Gln	Asp	Ser	Leu	Gln	Leu	Ser	Asp	Tyr	Asp
	435						440					445			
Ile	Gln	Ala	Ser	Arg	Ser	Val	Leu	Tyr	Glu	Arg	Gly	Asn	Thr	Ser	Ser
	450					455						460			
Ser	Ser	Ile	Trp	Tyr	Glu	Leu	Ala	Trp	Leu	Glu	Arg	Asp	Gln	Arg	Ile
465				470						475					480
Lys	Arg	Gly	Asp	Arg	Val	Leu	Gln	Leu	Ala	Phe	Gly	Ser	Gly	Phe	Lys
			485						490					495	
Cys	Asn	Ser	Ser	Val	Trp	Leu	Ala	Met	His	Asn	Ile	Asp	Ala		
		500						505					510		

<210> SEQ ID NO 3

<211> LENGTH: 457

<212> TYPE: PRT

<213> ORGANISM: Perkinsus marinus

<400> SEQUENCE: 3

Met	Thr	Thr	Ser	Thr	Thr	Val	Gln	Leu	Gln	Glu	Asp	Leu	Ser	Ser
1			5					10					15	
Gly	Asp	Gln	Asn	Ala	His	Pro	Ser	Pro	Ser	Arg	Ala	Thr	Pro	Val
		20					25					30		
Gly	Asp	Thr	Lys	Glu	Asp	Ala	Arg	Val	Val	Ile	Lys	Leu	Phe	Thr
		35				40						45		
Trp	Val	Asp	Val	Thr	Ala	Trp	Leu	Asn	Asp	His	Pro	Gly	Gly	Ser
	50					55					60			
Val	Leu	Arg	Ala	Phe	Asn	Lys	Lys	Asp	Ala	Thr	Asp	Ala	Val	Met
65				70					75					80
Met	His	Thr	Asp	Glu	Ala	Ile	Lys	Arg	Ile	Ile	Arg	Phe	Ser	Asn
			85					90						95

-continued

```

Val Ser Ser Ala Pro Ile Asn Ala Ser Ile Gly Asp Val Gln Val Ile
      100                      105                      110

Glu Lys Ser Leu Ser Arg Glu Gln Leu Met Tyr Tyr Lys Leu Arg Thr
      115                      120                      125

Leu Ala Arg Asn Gln Gly Trp Phe Gln Ser Asn Leu Leu Tyr Glu Gly
      130                      135                      140

Val Lys Ala Met Ile Ala Phe Gly Leu Leu Ile Ile Gly Phe Ala Thr
      145                      150                      155                      160

Leu Tyr Phe Asp Tyr Gly Ile Trp Ser Thr Ala Leu Ile Gly Phe Ala
      165                      170                      175

Trp Phe Gln Leu Gly Trp Leu Gly His Asp Trp Ser His His Thr Ala
      180                      185                      190

Leu Pro Lys Ser Thr Thr Asn Cys Ala Asn Tyr Asn Asp Tyr Leu Gly
      195                      200                      205

Trp Leu Thr Gly Leu Ala Arg Gly Asn Thr Leu Leu Trp Trp Lys Leu
      210                      215                      220

Arg His Asn Thr His His Val Leu Thr Asn Gln Tyr Glu Asn Asp Pro
      225                      230                      235                      240

Asp Ile Leu Thr Gln Pro Pro Leu His Phe Phe Glu Asp Phe Asp Val
      245                      250                      255

Gly Asn Val Asn Arg Tyr Gln Ala Val Tyr Tyr Leu Pro Met Leu Thr
      260                      265                      270

Leu Leu His Leu Phe Trp Leu Tyr Glu Ser Val Leu Val Cys Leu Arg
      275                      280                      285

Gln Ser Arg Ser Ile Asn Arg Tyr Asn Arg Met His Ala Arg Arg Asp
      290                      295                      300

Thr Val Ala Leu Val Leu His Ile Leu Ile Val Gly Ile Ile Ser Tyr
      305                      310                      315                      320

Thr Ser Gly Lys Tyr Leu Leu Ile Leu Leu Ala Tyr Met Leu Ser Gly
      325                      330                      335

Phe Leu Thr Ala Val Val Val Phe Ala Ser His Tyr Asn Glu Pro Arg
      340                      345                      350

Val Ala Ser Gly Glu Ser Leu Ser Leu Val Arg Gln Thr Leu Leu Thr
      355                      360                      365

Thr Ile Asn Ile Gly Ser Phe Ser Asp Thr His Trp Glu Lys Lys Leu
      370                      375                      380

Trp Phe Tyr Leu Thr Gly Gly Leu Asn Met Gln Ile Glu His His Leu
      385                      390                      395                      400

Phe Pro Thr Met Pro Arg His Asn Leu Pro Lys Thr Thr Phe Leu Val
      405                      410                      415

Lys Ser Leu Ala Gln Glu Leu Gly Leu Pro Tyr Lys Glu Thr Asn Ile
      420                      425                      430

Val Ser Leu Thr Lys Ala Ala Val Thr Thr Leu His His Asn Ala Leu
      435                      440                      445

Arg Asn Ile Glu Arg Leu Leu Ala Arg
      450                      455

```

<210> SEQ ID NO 4

<211> LENGTH: 411

<212> TYPE: PRT

<213> ORGANISM: Perkinsus marinus

-continued

<400> SEQUENCE: 4

Met	Ser	Ser	Leu	Thr	Leu	Tyr	Arg	Gly	Pro	Phe	Ser	Arg	Met	Val	Leu
1				5					10					15	
Pro	Arg	Gln	Glu	Ile	Cys	Ile	Asn	Gly	Arg	Ile	Tyr	Asp	Val	Thr	Glu
		20						25				30			
Phe	Ile	Asn	Arg	His	Pro	Gly	Gly	Lys	Ile	Ile	Leu	Phe	Gln	Val	Gly
		35					40					45			
Ala	Asp	Ala	Thr	Asp	Ala	Phe	Arg	Glu	Phe	His	Ala	Gly	Ser	Glu	Lys
	50					55					60				
Ala	Glu	Lys	Ile	Leu	Lys	Thr	Leu	Pro	Ser	Arg	Asp	Asp	Asp	Gly	Thr
65					70					75				80	
Phe	Leu	Pro	Ser	Thr	Gln	Arg	Ser	Ile	Met	Asp	Asp	Phe	Lys	Arg	Leu
				85					90					95	
Arg	Asp	Asp	Leu	Val	Ser	Arg	Gly	Val	Phe	Lys	Pro	Ser	Val	Met	His
			100					105					110		
Val	Val	Tyr	Arg	Cys	Leu	Glu	Val	Val	Ala	Leu	Tyr	Leu	Ile	Gly	Phe
		115					120					125			
Tyr	Leu	Ala	Leu	Cys	Thr	Ser	Asn	Val	Tyr	Val	Gly	Cys	Ala	Val	Leu
	130						135				140				
Gly	Val	Ala	Gln	Gly	Arg	Ala	Gly	Trp	Leu	Met	His	Glu	Gly	Gly	His
145					150					155					160
His	Ser	Leu	Thr	Gly	Asn	Trp	Lys	Val	Asp	Gln	Phe	Leu	Gln	Glu	Leu
			165						170					175	
Phe	Phe	Gly	Ile	Gly	Cys	Gly	Met	Ser	Ala	Ala	Trp	Trp	Arg	Asn	Ala
			180					185					190		
His	Asn	Lys	His	His	Ala	Ala	Pro	Gln	His	Leu	Gly	Lys	Asp	Val	Asp
		195					200					205			
Leu	Glu	Thr	Leu	Pro	Leu	Val	Ala	Phe	Asn	Lys	Ala	Val	Leu	Arg	Gly
	210					215					220				
Arg	Leu	Pro	Ser	Val	Trp	Ile	Arg	Ser	Gln	Ala	Val	Cys	Phe	Ala	Pro
225					230					235					240
Ile	Ser	Thr	Leu	Leu	Val	Ser	Phe	Phe	Trp	Gln	Phe	Tyr	Leu	His	Pro
			245						250					255	
Arg	His	Ile	Ile	Arg	Thr	Gly	Arg	Arg	Met	Glu	Ser	Phe	Trp	Leu	Leu
			260					265					270		
Val	Arg	Tyr	Leu	Val	Ile	Val	Tyr	Leu	Gly	Phe	Ser	Tyr	Gly	Leu	Val
		275				280						285			
Ser	Val	Leu	Leu	Cys	Tyr	Ile	Ala	Ser	Val	His	Val	Gly	Gly	Met	Tyr
	290					295					300				
Ile	Phe	Val	His	Phe	Ala	Leu	Ser	His	Thr	His	Leu	Pro	Val	Ile	Asn
305					310					315					320
Gln	His	Gly	Arg	Ala	Asn	Trp	Leu	Glu	Tyr	Ala	Ser	Lys	His	Thr	Val
			325						330					335	
Asn	Val	Ser	Thr	Asn	Asn	Tyr	Phe	Val	Thr	Trp	Leu	Met	Ser	Tyr	Leu
			340					345					350		
Asn	Tyr	Gln	Ile	Glu	His	His	Leu	Phe	Pro	Ser	Cys	Pro	Gln	Phe	Arg
		355					360					365			
Phe	Pro	Gly	Tyr	Val	Ser	Met	Arg	Val	Arg	Glu	Phe	Phe	His	Lys	His
						375					380				
Gly	Leu	Lys	Tyr	Asn	Glu	Val	Gly	Tyr	Leu	His	Ala	Leu	Asn	Leu	Thr
385					390					395					400

-continued

Phe Ser Asn Leu Ala Ala Val Ala Ile Val Glu
 405 410

<210> SEQ ID NO 5
 <211> LENGTH: 27
 <212> TYPE: DNA
 <213> ORGANISM: Artificial Sequence
 <220> FEATURE:
 <223> OTHER INFORMATION: Primer sequence

<400> SEQUENCE: 5

atgcaagttc ccgcgagca tcaactcc 27

<210> SEQ ID NO 6
 <211> LENGTH: 31
 <212> TYPE: DNA
 <213> ORGANISM: Artificial Sequence
 <220> FEATURE:
 <223> OTHER INFORMATION: Primer sequence

<400> SEQUENCE: 6

cgttacgcat caatattatg catagccaac c 31

<210> SEQ ID NO 7
 <211> LENGTH: 26
 <212> TYPE: DNA
 <213> ORGANISM: Artificial Sequence
 <220> FEATURE:
 <223> OTHER INFORMATION: Primer sequence with restriction
 sites for cloning into yeast exp resion vector

<400> SEQUENCE: 7

ttggtaccat gggatttcct gcggag 26

<210> SEQ ID NO 8
 <211> LENGTH: 32
 <212> TYPE: DNA
 <213> ORGANISM: Artificial Sequence
 <220> FEATURE:
 <223> OTHER INFORMATION: Primer sequence

<400> SEQUENCE: 8

gggagctctt acgcatcaat attatgcata gc 32

<210> SEQ ID NO 9
 <211> LENGTH: 1533
 <212> TYPE: DNA
 <213> ORGANISM: Perkinsus marinus
 <220> FEATURE:
 <221> NAME/KEY: CDS
 <222> LOCATION: (1)..(1533)

<400> SEQUENCE: 9

atg cga ttt cct gcg gag cgt cac ttc act cgg gtt ata tct atc tgt 48
 Met Arg Phe Pro Ala Glu Arg His Phe Thr Arg Val Ile Ser Ile Cys
 1 5 10 15

gat atc atc atc tca ggc ccc ttt gga atg tgt aac cat gat tac tcc 96
 Asp Ile Ile Ile Ser Gly Pro Phe Gly Met Cys Asn His Asp Tyr Ser
 20 25 30

tct tct ata cct gcc tct tgt agt ggt agc act cga cgc atg cgt ttg 144
 Ser Ser Ile Pro Ala Ser Cys Ser Gly Ser Thr Arg Arg Met Arg Leu
 35 40 45

-continued

gta gcc tac atc aca ttg gtc tct atc cac tat caa cag cta ctc ttt Val Ala Tyr Ile Thr Leu Val Ser Ile His Tyr Gln Gln Leu Leu Phe 50 55 60	192
tac tct tct atc gta act cta atc act ggc tat cac tac tat gtc gca Tyr Ser Ser Ile Val Thr Leu Ile Thr Gly Tyr His Tyr Tyr Val Ala 65 70 75 80	240
gct ctg ccc ctt tac gac ata tca ctt gct cta tct gtg ctt tcg gga Ala Leu Pro Leu Tyr Asp Ile Ser Leu Ala Leu Ser Val Leu Ser Gly 85 90 95	288
ata acg cta ctt tgg tta tgt aat tgc tat tac aac agc aag ccc aat Ile Thr Leu Leu Trp Leu Cys Asn Cys Tyr Tyr Asn Ser Lys Pro Asn 100 105 110	336
gta ttc tgc atc gat cat gct gag ttt gac gct ccc ccc tct tgg aag Val Phe Cys Ile Asp His Ala Glu Phe Asp Ala Pro Pro Ser Trp Lys 115 120 125	384
gtc agc cat gaa gac atc atc aac att gcc aag ata caa ggt tgc tac Val Ser His Glu Asp Ile Ile Asn Ile Ala Lys Ile Gln Gly Cys Tyr 130 135 140	432
acg gaa gat tca ctc aac ttc atg cag cgt ctt ctc gaa agg tct ggt Thr Glu Asp Ser Leu Asn Phe Met Gln Arg Leu Leu Glu Arg Ser Gly 145 150 155 160	480
act tgc cct ggt aag agt gct gct tac cct cca gtg gtt gtt gag tca Thr Cys Pro Gly Lys Ser Ala Ala Tyr Pro Pro Val Val Val Glu Ser 165 170 175	528
ttg agg act aac gcc ccc gct gat gcc tct gct gtc aat act aga gag Leu Arg Thr Asn Ala Pro Ala Asp Ala Ser Ala Val Asn Thr Arg Glu 180 185 190	576
gaa gcg agg gaa gtg atc ata act acg gtc aaa gat ctg ctt aag aag Glu Ala Arg Glu Val Ile Ile Thr Thr Val Lys Asp Leu Leu Lys Lys 195 200 205	624
act ggt gtg cat cct aaa tct att gac tat atc atc gtc aat tgc gcc Thr Gly Val His Pro Lys Ser Ile Asp Tyr Ile Ile Val Asn Cys Ala 210 215 220	672
atg tac aac ccg aca ccg tca cat gct gct atg ata gtg aat gaa gtc Met Tyr Asn Pro Thr Pro Ser His Ala Ala Met Ile Val Asn Glu Val 225 230 235 240	720
ggt atg agg aat gac gtc atc acc tat aac ctc agt ggt atg ggg tgt Gly Met Arg Asn Asp Val Ile Thr Tyr Asn Leu Ser Gly Met Gly Cys 245 250 255	768
agt gcc ggt gtt atc aca att gat cta gca acg cgt ctg ttg aga gag Ser Ala Gly Val Ile Thr Ile Asp Leu Ala Thr Arg Leu Leu Arg Glu 260 265 270	816
acc aga ggt agg gca ctg att gtg tca act gag ata cta act cgt tgc Thr Arg Gly Arg Ala Leu Ile Val Ser Thr Glu Ile Leu Thr Arg Cys 275 280 285	864
ttc tat cgt ggt aat gat cgt gaa cca ctg atg ggt aac aca tta ttc Phe Tyr Arg Gly Asn Asp Arg Glu Pro Leu Met Gly Asn Thr Leu Phe 290 295 300	912
aga tgt ggt ggt gct gct gct ttg cta tcg tca ttg cct aaa gac tta Arg Cys Gly Gly Ala Ala Ala Leu Leu Ser Ser Leu Pro Lys Asp Leu 305 310 315 320	960
tct cgt ggt aaa tat aag ttg tta cat acc gta aga acg caa gtt ctc Ser Arg Gly Lys Tyr Lys Leu Leu His Thr Val Arg Thr Gln Val Leu 325 330 335	1008
ggt aat gag agt ttt gaa acg att atg gag act gat gac agc acc aag Gly Asn Glu Ser Phe Glu Thr Ile Met Glu Thr Asp Asp Ser Thr Lys 340 345 350	1056

-continued

ccc aac agc att gtt aca ctc agg ctc cag aag agt att atc aaa gtt	1104
Pro Asn Ser Ile Val Thr Leu Arg Leu Gln Lys Ser Ile Ile Lys Val	
355 360 365	
gct gct gtt gct att aaa caa aat ttt act aag ctt gct tat gtg gtt	1152
Ala Ala Val Ala Ile Lys Gln Asn Phe Thr Lys Leu Ala Tyr Val Val	
370 375 380	
ctg cct ctg aga gaa ctg ttg aag gtc gta tat tgc atg gtg atg atg	1200
Leu Pro Leu Arg Glu Leu Leu Lys Val Val Tyr Ser Met Val Met Met	
385 390 395 400	
aag atg agg agg aag tgc tca aaa gaa ggt cgt gag ttg tac gta cct	1248
Lys Met Arg Arg Lys Ser Ser Lys Glu Gly Arg Glu Leu Tyr Val Pro	
405 410 415	
gat ttt aga aag ggc att gat cat tgg tgt att cat gct ggt ggc cgt	1296
Asp Phe Arg Lys Gly Ile Asp His Trp Cys Ile His Ala Gly Gly Arg	
420 425 430	
ggt gta ttg gat acc tta caa gat tct ctc cag cta tca gac tat gat	1344
Gly Val Leu Asp Thr Leu Gln Asp Ser Leu Gln Leu Ser Asp Tyr Asp	
435 440 445	
atc caa gca agc cgt agt gtt ctt tat gag aga ggc aac acc agt agc	1392
Ile Gln Ala Ser Arg Ser Val Leu Tyr Glu Arg Gly Asn Thr Ser Ser	
450 455 460	
agt agc ata tgg tat gag ttg gca tgg ctc gaa cgt gac caa cgt att	1440
Ser Ser Ile Trp Tyr Glu Leu Ala Trp Leu Glu Arg Asp Gln Arg Ile	
465 470 475 480	
aag cgt gga gat agg gta tta cag gtg gct ttt ggt agt ggt ttc aaa	1488
Lys Arg Gly Asp Arg Val Leu Gln Val Ala Phe Gly Ser Gly Phe Lys	
485 490 495	
tgt aac tca tca gta tgg ttg gct atg cat aat att gat gcg taa	1533
Cys Asn Ser Ser Val Trp Leu Ala Met His Asn Ile Asp Ala	
500 505 510	

<210> SEQ ID NO 10

<211> LENGTH: 510

<212> TYPE: PRT

<213> ORGANISM: Perkinsus marinus

<220> FEATURE:

<400> SEQUENCE: 10

Met Arg Phe Pro Ala Glu Arg His Phe Thr Arg Val Ile Ser Ile Cys	
1 5 10 15	
Asp Ile Ile Ile Ser Gly Pro Phe Gly Met Cys Asn His Asp Tyr Ser	
20 25 30	
Ser Ser Ile Pro Ala Ser Cys Ser Gly Ser Thr Arg Arg Met Arg Leu	
35 40 45	
Val Ala Tyr Ile Thr Leu Val Ser Ile His Tyr Gln Gln Leu Leu Phe	
50 55 60	
Tyr Ser Ser Ile Val Thr Leu Ile Thr Gly Tyr His Tyr Tyr Val Ala	
65 70 75 80	
Ala Leu Pro Leu Tyr Asp Ile Ser Leu Ala Leu Ser Val Leu Ser Gly	
85 90 95	
Ile Thr Leu Leu Trp Leu Cys Asn Cys Tyr Tyr Asn Ser Lys Pro Asn	
100 105 110	
Val Phe Cys Ile Asp His Ala Glu Phe Asp Ala Pro Pro Ser Trp Lys	
115 120 125	
Val Ser His Glu Asp Ile Ile Asn Ile Ala Lys Ile Gln Gly Cys Tyr	
130 135 140	

-continued

Thr	Glu	Asp	Ser	Leu	Asn	Phe	Met	Gln	Arg	Leu	Leu	Glu	Arg	Ser	Gly
145					150					155					160
Thr	Cys	Pro	Gly	Lys	Ser	Ala	Ala	Tyr	Pro	Pro	Val	Val	Val	Glu	Ser
				165					170						175
Leu	Arg	Thr	Asn	Ala	Pro	Ala	Asp	Ala	Ser	Ala	Val	Asn	Thr	Arg	Glu
			180					185						190	
Glu	Ala	Arg	Glu	Val	Ile	Ile	Thr	Thr	Val	Lys	Asp	Leu	Leu	Lys	Lys
		195					200					205			
Thr	Gly	Val	His	Pro	Lys	Ser	Ile	Asp	Tyr	Ile	Ile	Val	Asn	Cys	Ala
	210					215						220			
Met	Tyr	Asn	Pro	Thr	Pro	Ser	His	Ala	Ala	Met	Ile	Val	Asn	Glu	Val
225					230					235					240
Gly	Met	Arg	Asn	Asp	Val	Ile	Thr	Tyr	Asn	Leu	Ser	Gly	Met	Gly	Cys
			245						250					255	
Ser	Ala	Gly	Val	Ile	Thr	Ile	Asp	Leu	Ala	Thr	Arg	Leu	Leu	Arg	Glu
			260					265						270	
Thr	Arg	Gly	Arg	Ala	Leu	Ile	Val	Ser	Thr	Glu	Ile	Leu	Thr	Arg	Cys
	275						280					285			
Phe	Tyr	Arg	Gly	Asn	Asp	Arg	Glu	Pro	Leu	Met	Gly	Asn	Thr	Leu	Phe
	290					295					300				
Arg	Cys	Gly	Gly	Ala	Ala	Ala	Leu	Leu	Ser	Ser	Leu	Pro	Lys	Asp	Leu
305					310					315					320
Ser	Arg	Gly	Lys	Tyr	Lys	Leu	Leu	His	Thr	Val	Arg	Thr	Gln	Val	Leu
			325						330					335	
Gly	Asn	Glu	Ser	Phe	Glu	Thr	Ile	Met	Glu	Thr	Asp	Asp	Ser	Thr	Lys
		340						345					350		
Pro	Asn	Ser	Ile	Val	Thr	Leu	Arg	Leu	Gln	Lys	Ser	Ile	Ile	Lys	Val
		355				360						365			
Ala	Ala	Val	Ala	Ile	Lys	Gln	Asn	Phe	Thr	Lys	Leu	Ala	Tyr	Val	Val
	370					375					380				
Leu	Pro	Leu	Arg	Glu	Leu	Leu	Lys	Val	Val	Tyr	Ser	Met	Val	Met	Met
385					390					395					400
Lys	Met	Arg	Arg	Lys	Ser	Ser	Lys	Glu	Gly	Arg	Glu	Leu	Tyr	Val	Pro
			405						410					415	
Asp	Phe	Arg	Lys	Gly	Ile	Asp	His	Trp	Cys	Ile	His	Ala	Gly	Gly	Arg
		420					425						430		
Gly	Val	Leu	Asp	Thr	Leu	Gln	Asp	Ser	Leu	Gln	Leu	Ser	Asp	Tyr	Asp
		435				440						445			
Ile	Gln	Ala	Ser	Arg	Ser	Val	Leu	Tyr	Glu	Arg	Gly	Asn	Thr	Ser	Ser
	450					455					460				
Ser	Ser	Ile	Trp	Tyr	Glu	Leu	Ala	Trp	Leu	Glu	Arg	Asp	Gln	Arg	Ile
465					470					475					480
Lys	Arg	Gly	Asp	Arg	Val	Leu	Gln	Val	Ala	Phe	Gly	Ser	Gly	Phe	Lys
			485						490					495	
Cys	Asn	Ser	Ser	Val	Trp	Leu	Ala	Met	His	Asn	Ile	Asp	Ala		
		500						505					510		

- continued

<210> SEQ ID NO 11
 <211> LENGTH: 50
 <212> TYPE: DNA
 <213> ORGANISM: Artificial Sequence
 <220> FEATURE:
 <223> OTHER INFORMATION: Primer sequence

<400> SEQUENCE: 11

ggaattcgag gagtaggato ttatctgagg atagtcacac tagtcgtact

50

<210> SEQ ID NO 12
 <211> LENGTH: 25
 <212> TYPE: DNA
 <213> ORGANISM: Artificial Sequence
 <220> FEATURE:
 <223> OTHER INFORMATION: Primer sequence

<400> SEQUENCE: 12

catctgcgaa tactaacat acatt

25

1. An isolated nucleic acid sequence which encodes a polypeptide with $\Delta 9$ -elongase activity and which is selected from the group consisting of:

- a sequence comprising nucleic acid residues 7668 to 9200 of SEQ ID NO: 1 or SEQ ID NO: 9;
- a nucleic acid sequence which hybridizes under stringent conditions with a nucleic acid sequence comprising residues 7668 to 9200 of SEQ ID NO: 1 or SEQ ID NO: 9;
- an isolated nucleic acid sequence which encodes a polypeptide with $\Delta 9$ -elongase activity, wherein the polypeptide comprises SEQ ID NO: 2 or SEQ ID NO: 10; and
- a derivative of a sequence comprising nucleic acid residues 7668 to 9200 of SEQ ID NO: 1 or SEQ ID NO: 9 which encodes a polypeptide with at least 50% identity at the amino acid level with SEQ ID NO: 2 or SEQ ID NO: 11; wherein said polypeptide has $\Delta 9$ -elongase activity.

2. A polypeptide which is encoded by the nucleic acid sequence as claimed in claim 1.

3. A gene construct comprising the nucleic acid sequence as claimed in claim 1 operably linked with one or more regulatory sequences.

4. A vector comprising the nucleic acid as claimed in claim 1 or a gene construct comprising said nucleic acid operably linked with one or more regulatory sequences.

5. A transgenic non-human organism comprising at least one nucleic acid according to claim 1, a gene construct comprising said nucleic acid operably linked with one or more regulatory sequences, or a vector comprising said nucleic acid or said gene construct.

6. The transgenic non-human organism as claimed in claim 5, wherein the organism is a microorganism, a non-human animal or a plant.

7. The transgenic non-human organism according to claim 6, wherein the organism is a plant.

8. A process for the conversion of linoleic acid or a derivative thereof to arachidonic acid or a derivative thereof in an organism, comprising

- introducing into an organism, which comprises linoleic acid, at least one nucleic acid sequence comprising an isolated nucleic acid sequence which encodes polypeptides with $\Delta 9$ -elongase, $\Delta 8$ -desaturase and $\Delta 5$ -desaturase activity, wherein the polypeptides are selected from the group consisting of SEQ ID NOs: 2, 3 and 4, and
- expressing said nucleic acid sequence.

9. The process as claimed in claim 8, further including the additional step of converting the arachidonic acid to an ω -3 fatty acid by introducing into the organism a nucleic acid encoding a ω -3 desaturase and optionally a $\Delta 5$ -elongase and/or a $\Delta 4$ -elongase and/or a $\Delta 4$ -desaturase.

10. A process for the conversion of 18:2 ^{$\Delta 9,12$} (linoleic acid) to 20:2 ^{$\Delta 11,14$} , comprising introducing into an organism which comprises linoleic acid at least one nucleic acid sequence which encodes a polypeptide having $\Delta 9$ -elongase activity and which comprises:

- a sequence comprising nucleic acid residues 7668 to 9200 of SEQ ID NO: 1 or SEQ ID NO: 9;
- a nucleic acid sequence which hybridizes under stringent conditions with a nucleic acid sequence comprising residues 7668 to 9200 of SEQ ID NO: 1 or SEQ ID NO: 9;
- an isolated nucleic acid sequence which encodes a polypeptide with $\Delta 9$ -elongase activity, wherein the polypeptide comprises SEQ ID NO: 2 or SEQ ID NO: 10; or
- a derivative of a sequence comprising nucleic acid residues 7668 to 9200 of SEQ ID NO: 1 or SEQ ID NO: 9 which encodes a polypeptide with at least 50% identity at the amino acid level with SEQ ID NO: 2 or SEQ ID NO: 10; wherein said polypeptide has $\Delta 9$ -elongase activity,

and expressing said nucleic acid sequence.

11. The process as claimed in claim 8, further including the step of induction with galactose.

12. The process as claimed claim 8, wherein the organism is a microorganisms, a non-human animal or a plant.

13. The process as claimed claim **11**, wherein the organism is a microorganisms, a non-human animal or a plant.

14. The process as claimed in claim **9**, further including the step of induction with galactose.

15. The process as claimed claim **9**, wherein the organism is a microorganisms, a non-human animal or a plant.

16. The process as claimed claim **14**, wherein the organism is a microorganisms, a non-human animal or a plant.

17. The process as claimed in claim **10**, further including the step of induction with galactose.

18. The process as claimed claim **10**, wherein the organism is a microorganisms, a non-human animal or a plant.

19. The process as claimed claim **17**, wherein the organism is a microorganisms, a non-human animal or a plant.

* * * * *